

Product datasheet for **CF506440**

IL1 beta (IL1B) Mouse Monoclonal Antibody [Clone ID: OTI1A7]

Product data:

Product Type:	Primary Antibodies
Clone Name:	OTI1A7
Applications:	WB
Recommended Dilution:	WB 1:4000
Reactivity:	Human
Host:	Mouse
Isotype:	IgG1
Clonality:	Monoclonal
Immunogen:	Full length human recombinant protein of human IL1B(NP_000567) produced in HEK293T cell.
Formulation:	Lyophilized powder (original buffer 1X PBS, pH 7.3, 8% trehalose)
Reconstitution Method:	For reconstitution, we recommend adding 100uL distilled water to a final antibody concentration of about 1 mg/mL. To use this carrier-free antibody for conjugation experiment, we strongly recommend performing another round of desalting process. (OriGene recommends Zeba Spin Desalting Columns, 7KMWCO from Thermo Scientific)
Purification:	Purified from mouse ascites fluids or tissue culture supernatant by affinity chromatography (protein A/G)
Conjugation:	Unconjugated
Storage:	Store at -20°C as received.
Stability:	Stable for 12 months from date of receipt.
Predicted Protein Size:	30.6 kDa
Gene Name:	interleukin 1 beta
Database Link:	NP_000567 Entrez Gene 3553 Human P01584



[View online »](#)

Background:

The protein encoded by this gene is a member of the interleukin 1 cytokine family. This cytokine is produced by activated macrophages as a proprotein, which is proteolytically processed to its active form by caspase 1 (CASP1/ICE). This cytokine is an important mediator of the inflammatory response, and is involved in a variety of cellular activities, including cell proliferation, differentiation, and apoptosis. The induction of cyclooxygenase-2 (PTGS2/COX2) by this cytokine in the central nervous system (CNS) is found to contribute to inflammatory pain hypersensitivity. This gene and eight other interleukin 1 family genes form a cytokine gene cluster on chromosome 2. [provided by RefSeq, Jul 2008]

Synonyms:

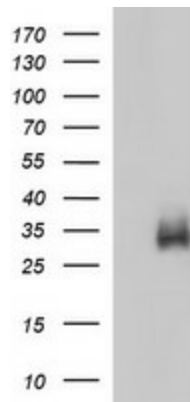
IL-1; IL1-BETA; IL1F2

Protein Families:

Druggable Genome, Secreted Protein

Protein Pathways:

Alzheimer's disease, Apoptosis, Cytokine-cytokine receptor interaction, Cytosolic DNA-sensing pathway, Graft-versus-host disease, Hematopoietic cell lineage, MAPK signaling pathway, NOD-like receptor signaling pathway, Prion diseases, Toll-like receptor signaling pathway, Type I diabetes mellitus

Product images:

HEK293T cells were transfected with the pCMV6-ENTRY control (Left lane) or pCMV6-ENTRY IL1B ([RC202079], Right lane) cDNA for 48 hrs and lysed. Equivalent amounts of cell lysates (5 ug per lane) were separated by SDS-PAGE and immunoblotted with anti-IL1B. Positive lysates [LY400196] (100ug) and [LC400196] (20ug) can be purchased separately from OriGene.