

## Product datasheet for **CF506345**

### CD64 (FCGR1A) Mouse Monoclonal Antibody [Clone ID: OTI3H9]

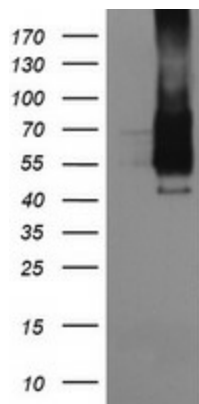
#### Product data:

Product Type:	Primary Antibodies
Clone Name:	OTI3H9
Applications:	FC, IF, WB
Recommended Dilution:	WB 1:1000, IF 1:100
Reactivity:	Human
Host:	Mouse
Isotype:	IgG1
Clonality:	Monoclonal
Immunogen:	Full length human recombinant protein of human FCGR1A(NP_000557) produced in HEK293T cell.
Formulation:	Lyophilized powder (original buffer 1X PBS, pH 7.3, 8% trehalose)
Reconstitution Method:	For reconstitution, we recommend adding 100uL distilled water to a final antibody concentration of about 1 mg/mL. To use this carrier-free antibody for conjugation experiment, we strongly recommend performing another round of desalting process. (OriGene recommends Zeba Spin Desalting Columns, 7KMWCO from Thermo Scientific)
Purification:	Purified from mouse ascites fluids or tissue culture supernatant by affinity chromatography (protein A/G)
Conjugation:	Unconjugated
Storage:	Store at -20°C as received.
Stability:	Stable for 12 months from date of receipt.
Predicted Protein Size:	42.5 kDa
Gene Name:	Fc fragment of IgG receptor Ia
Database Link:	<a href="#">NP_000557</a> <a href="#">Entrez Gene 2209 Human P12314</a>
Background:	This gene encodes a protein that plays an important role in the immune response. This protein is a high-affinity Fc-gamma receptor. The gene is one of three related gene family members located on chromosome 1. [provided by RefSeq, Jul 2008]

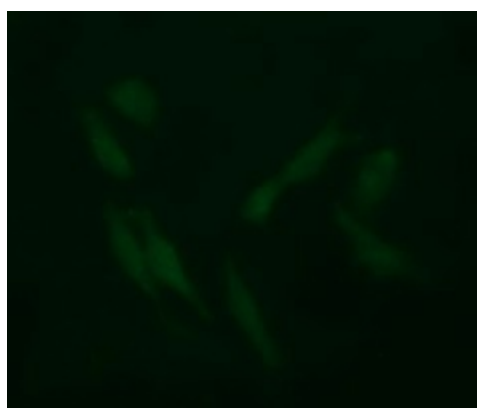


[View online »](#)

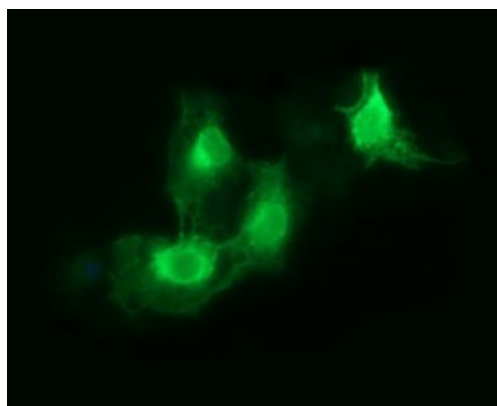
<b>Synonyms:</b>	CD64; CD64A; FCRI; IGFR1
<b>Protein Families:</b>	Transmembrane
<b>Protein Pathways:</b>	Fc gamma R-mediated phagocytosis, Hematopoietic cell lineage, Systemic lupus erythematosus

**Product images:**

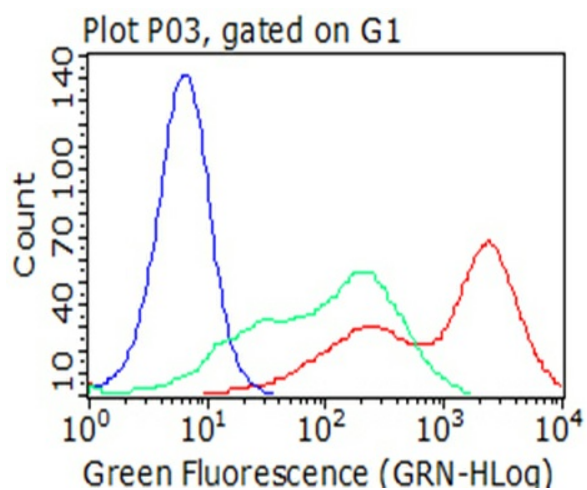
HEK293T cells were transfected with the pCMV6-ENTRY control (Left lane) or pCMV6-ENTRY FCGR1A ([RC207487], Right lane) cDNA for 48 hrs and lysed. Equivalent amounts of cell lysates (5 ug per lane) were separated by SDS-PAGE and immunoblotted with anti-FCGR1A. Positive lysates [LY400193] (100ug) and [LC400193] (20ug) can be purchased separately from OriGene.



Immunofluorescent staining of HeLa cells using anti-FCGR1A mouse monoclonal antibody ([TA506345]).



Anti-FCGR1A mouse monoclonal antibody ([TA506345]) immunofluorescent staining of COS7 cells transiently transfected by pCMV6-ENTRY FCGR1A ([RC207487]).



Flow cytometric analysis of living 293T cells transfected with FCGR1A overexpression plasmid ([RC207487]), Red/empty vector ([PS100001], Blue) using anti-FCGR1A antibody ([TA506345]). Cells incubated with a non-specific antibody (Green) were used as isotype control (1:100).