

Product datasheet for **CF506323**

Apc11 (ANAPC11) Mouse Monoclonal Antibody [Clone ID: OTI3F5]

Product data:

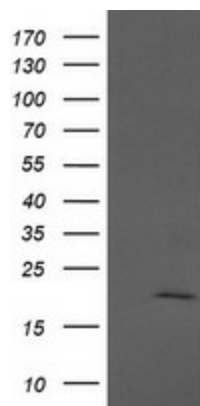
Product Type:	Primary Antibodies
Clone Name:	OTI3F5
Applications:	IF, IHC, WB
Recommended Dilution:	WB 1:4000, IHC 1:150, IF 1:100
Reactivity:	Human, Mouse, Rat
Host:	Mouse
Isotype:	IgG1
Clonality:	Monoclonal
Immunogen:	Full length human recombinant protein of human ANAPC11(NP_001002244) produced in HEK293T cell.
Formulation:	Lyophilized powder (original buffer 1X PBS, pH 7.3, 8% trehalose)
Reconstitution Method:	For reconstitution, we recommend adding 100uL distilled water to a final antibody concentration of about 1 mg/mL. To use this carrier-free antibody for conjugation experiment, we strongly recommend performing another round of desalting process. (OriGene recommends Zeba Spin Desalting Columns, 7KMWCO from Thermo Scientific)
Purification:	Purified from mouse ascites fluids or tissue culture supernatant by affinity chromatography (protein A/G)
Conjugation:	Unconjugated
Storage:	Store at -20°C as received.
Stability:	Stable for 12 months from date of receipt.
Predicted Protein Size:	20.5 kDa
Gene Name:	anaphase promoting complex subunit 11
Database Link:	NP_001002244 Entrez Gene 66156 Mouse Entrez Gene 498030 Rat Entrez Gene 51529 Human Q9NYG5
Synonyms:	APC11; Apc11p; HSPC214
Protein Families:	Druggable Genome



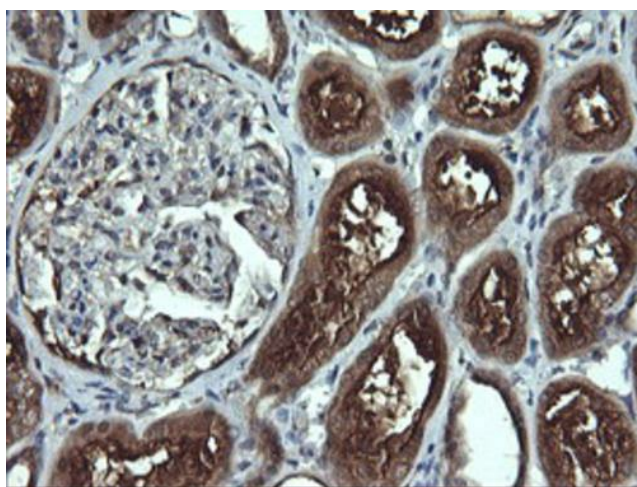
[View online »](#)

Protein Pathways: Cell cycle, Oocyte meiosis, Progesterone-mediated oocyte maturation, Ubiquitin mediated proteolysis

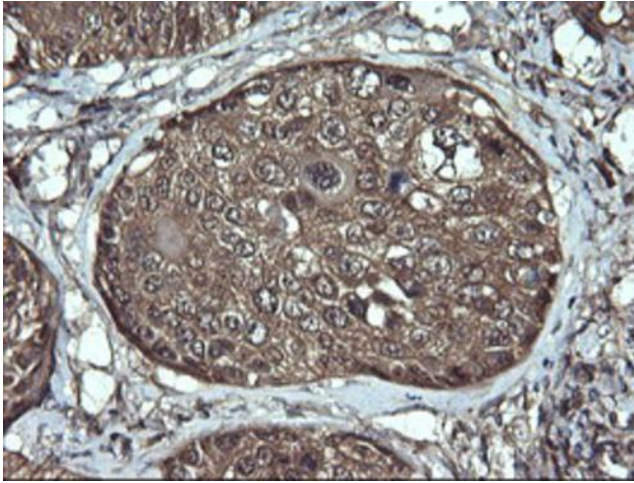
Product images:



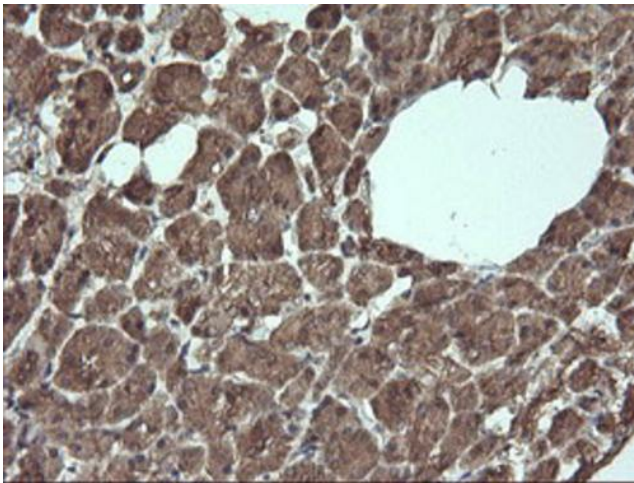
HEK293T cells were transfected with the pCMV6-ENTRY control (Left lane) or pCMV6-ENTRY ANAPC11 ([RC200097], Right lane) cDNA for 48 hrs and lysed. Equivalent amounts of cell lysates (5 ug per lane) were separated by SDS-PAGE and immunoblotted with anti-ANAPC11. Positive lysates [LY424181] (100ug) and [LC424181] (20ug) can be purchased separately from OriGene.



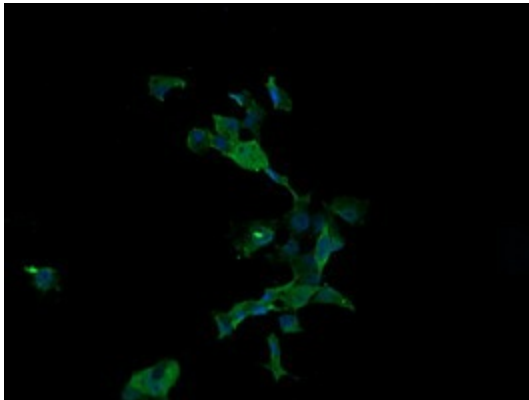
Immunohistochemical staining of paraffin-embedded Human Kidney tissue within the normal limits using anti-ANAPC11 mouse monoclonal antibody. (Heat-induced epitope retrieval by 10mM citric buffer, pH6.0, 120°C for 3min, [TA506323])



Immunohistochemical staining of paraffin-embedded Carcinoma of Human lung tissue using anti-ANAPC11 mouse monoclonal antibody. (Heat-induced epitope retrieval by 10mM citric buffer, pH6.0, 120°C for 3min, [TA506323])



Immunohistochemical staining of paraffin-embedded Human pancreas tissue within the normal limits using anti-ANAPC11 mouse monoclonal antibody. (Heat-induced epitope retrieval by 10mM citric buffer, pH6.0, 120°C for 3min, [TA506323])



Western blot analysis of extracts (10ug) from COS7 cell line by using anti-ANAPC11 monoclonal antibody at 1:200 dilution.