

Product datasheet for **CF504372**

SH2D2A Mouse Monoclonal Antibody [Clone ID: OTI3C7]

Product data:

Product Type:	Primary Antibodies
Clone Name:	OTI3C7
Applications:	FC, IF, IHC, WB
Recommended Dilution:	WB 1:500~2000, IF 1:100, FLOW 1:100
Reactivity:	Human, Monkey, Mouse
Host:	Mouse
Isotype:	IgG1
Clonality:	Monoclonal
Immunogen:	Full length human recombinant protein of human SH2D2A(NP_003966) produced in HEK293T cell.
Formulation:	Lyophilized powder (original buffer 1X PBS, pH 7.3, 8% trehalose)
Reconstitution Method:	For reconstitution, we recommend adding 100uL distilled water to a final antibody concentration of about 1 mg/mL. To use this carrier-free antibody for conjugation experiment, we strongly recommend performing another round of desalting process. (OriGene recommends Zeba Spin Desalting Columns, 7KMWCO from Thermo Scientific)
Purification:	Purified from mouse ascites fluids or tissue culture supernatant by affinity chromatography (protein A/G)
Conjugation:	Unconjugated
Storage:	Store at -20°C as received.
Stability:	Stable for 12 months from date of receipt.
Predicted Protein Size:	42.8 kDa
Gene Name:	SH2 domain containing 2A
Database Link:	NP_003966 Entrez Gene 27371 Mouse Entrez Gene 718686 Monkey Entrez Gene 9047 Human Q9NP31



[View online »](#)

Background:

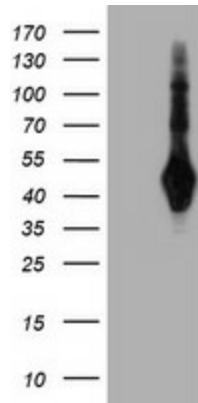
This gene encodes an adaptor protein thought to function in T-cell signal transduction. A related protein in mouse is responsible for the activation of lymphocyte-specific protein-tyrosine kinase and functions in downstream signaling. Alternative splicing results in multiple transcript variants. [provided by RefSeq]

Synonyms:

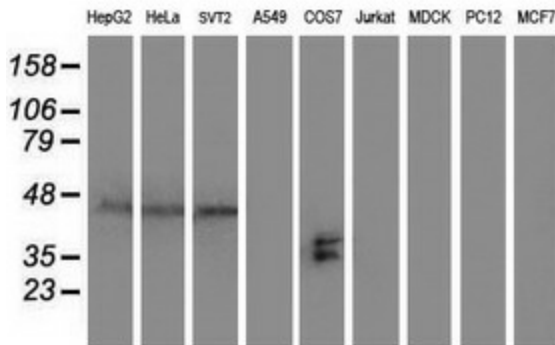
F2771; SCAP; TSAD; VRAP

Protein Pathways:

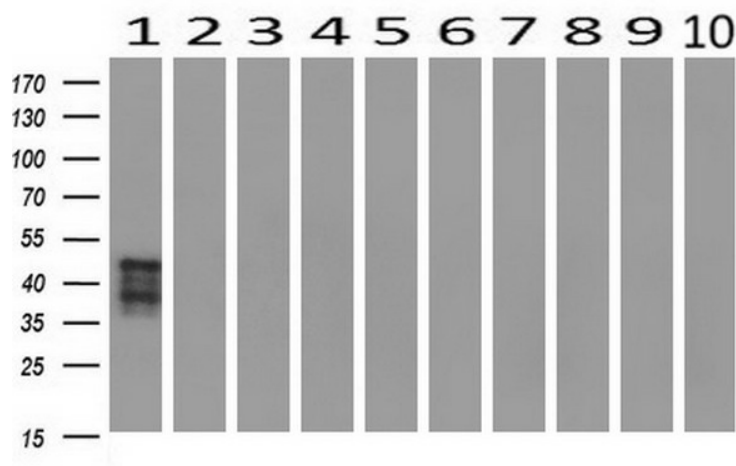
VEGF signaling pathway

Product images:


HEK293T cells were transfected with the pCMV6-ENTRY control (Left lane) or pCMV6-ENTRY SH2D2A ([RC204162], Right lane) cDNA for 48 hrs and lysed. Equivalent amounts of cell lysates (5 ug per lane) were separated by SDS-PAGE and immunoblotted with anti-SH2D2A. Positive lysates [LY418322] (100ug) and [LC418322] (20ug) can be purchased separately from OriGene.



Western blot analysis of extracts (35ug) from 9 different cell lines by using anti-SH2D2A monoclonal antibody.



Western blot analysis of extracts (10ug) from 10 Human tissue by using anti-SH2D2A monoclonal antibody at 1:200 (1: Testis; 2: Omentum; 3: Uterus; 4: Breast; 5: Brain; 6: Liver; 7: Ovary; 8: Thyroid gland; 9: colon;10: spleen).

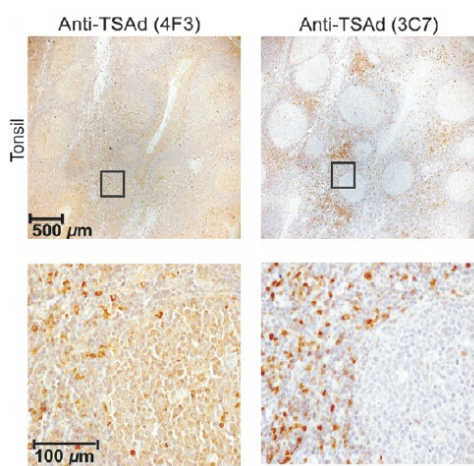
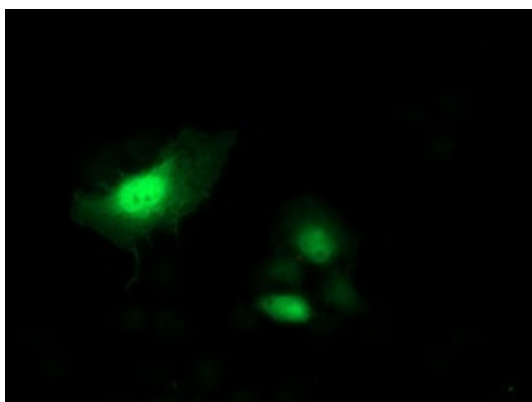
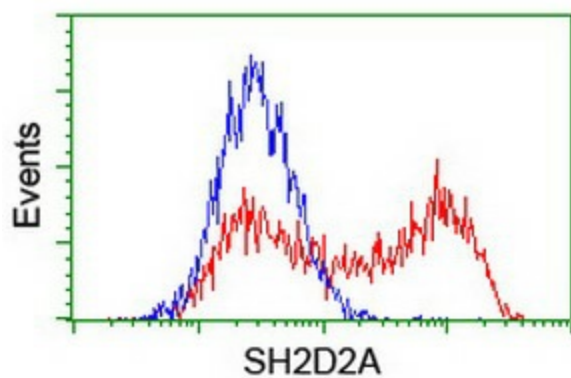


Figure from citation: Comparison of IHC on tonsil with clone 4F3 ([TA504364]) and clone 3C7 ([TA504372]) SH2D2A mAb and HRP-conjugated secondary antibodies. [View Citation](#)



Anti-SH2D2A mouse monoclonal antibody ([TA504372]) immunofluorescent staining of COS7 cells transiently transfected by pCMV6-ENTRY SH2D2A ([RC204162]).



HEK293T cells transfected with either [RC204162] overexpress plasmid (Red) or empty vector control plasmid (Blue) were immunostained by anti-SH2D2A antibody ([TA504372]), and then analyzed by flow cytometry.