

Product datasheet for **CF504220**

APMAP Mouse Monoclonal Antibody [Clone ID: OTI4F6]

Product data:

Product Type:	Primary Antibodies
Clone Name:	OTI4F6
Applications:	FC, IHC, WB
Recommended Dilution:	WB 1:500~2000, IHC 1:150, FLOW 1:100
Reactivity:	Human, Dog, Rat, Monkey, Mouse
Host:	Mouse
Isotype:	IgG2b
Clonality:	Monoclonal
Immunogen:	Full length human recombinant protein of human C20orf3(NP_065392) produced in HEK293T cell.
Formulation:	Lyophilized powder (original buffer 1X PBS, pH 7.3, 8% trehalose)
Reconstitution Method:	For reconstitution, we recommend adding 100uL distilled water to a final antibody concentration of about 1 mg/mL. To use this carrier-free antibody for conjugation experiment, we strongly recommend performing another round of desalting process. (OriGene recommends Zeba Spin Desalting Columns, 7KMWCO from Thermo Scientific)
Purification:	Purified from mouse ascites fluids or tissue culture supernatant by affinity chromatography (protein A/G)
Conjugation:	Unconjugated
Storage:	Store at -20°C as received.
Stability:	Stable for 12 months from date of receipt.
Predicted Protein Size:	46.3 kDa
Gene Name:	adipocyte plasma membrane associated protein
Database Link:	NP_065392 Entrez Gene 71881 Mouse Entrez Gene 366227 Rat Entrez Gene 608089 Dog Entrez Gene 704948 Monkey Entrez Gene 57136 Human Q9HDC9



[View online »](#)

Background:

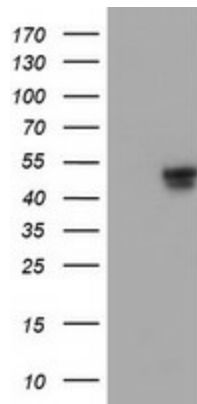
CHMP1B belongs to the chromatin-modifying protein/charged multivesicular body protein (CHMP) family. These proteins are components of ESCRT-III (endosomal sorting complex required for transport III), a complex involved in degradation of surface receptor proteins and formation of endocytic multivesicular bodies (MVBs). Some CHMPs have both nuclear and cytoplasmic/vesicular distributions, and one such CHMP, CHMP1A (MIM 164010), is required for both MVB formation and regulation of cell cycle progression (Tsang et al., 2006 [PubMed 16730941]). [supplied by OMIM]

Synonyms:

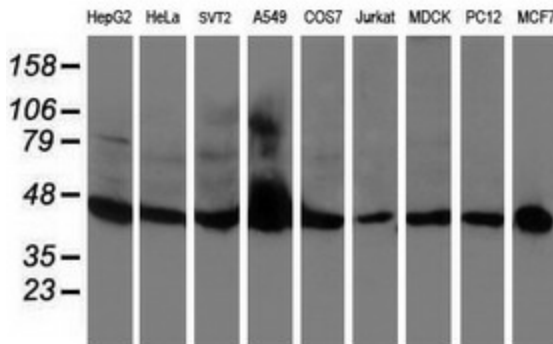
BSCv; C20orf3

Protein Families:

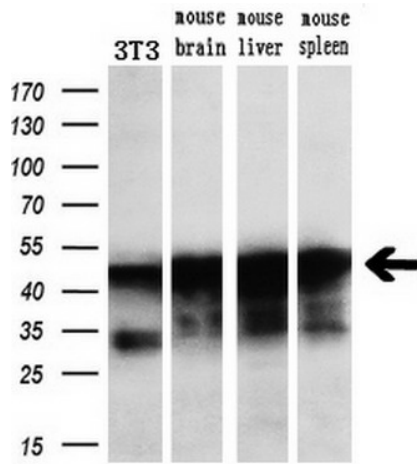
Transmembrane

Product images:


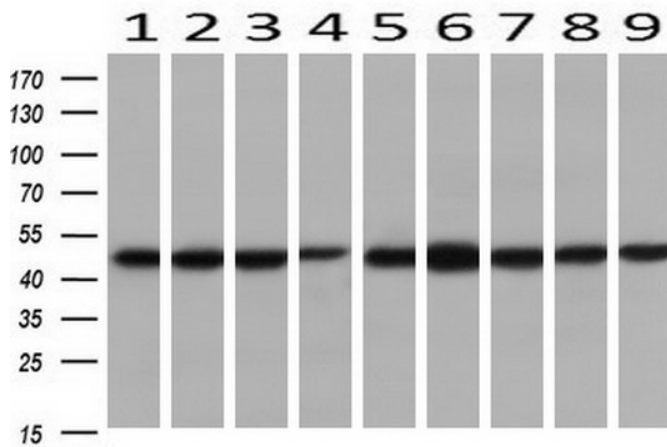
HEK293T cells were transfected with the pCMV6-ENTRY control (Cat# [PS100001], Left lane) or pCMV6-ENTRY C20orf3 (Cat# [RC202410], Right lane) cDNA for 48 hrs and lysed. Equivalent amounts of cell lysates (5 ug per lane) were separated by SDS-PAGE and immunoblotted with anti-C20orf3 (Cat# [TA504220]). Positive lysates [LY402795] (100ug) and [LC402795] (20ug) can be purchased separately from OriGene.



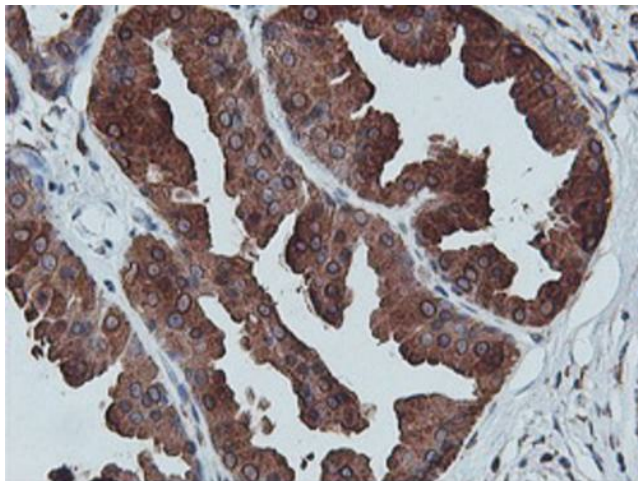
Western blot analysis of extracts (35ug) from 9 different cell lines by using anti-C20orf3 monoclonal antibody.



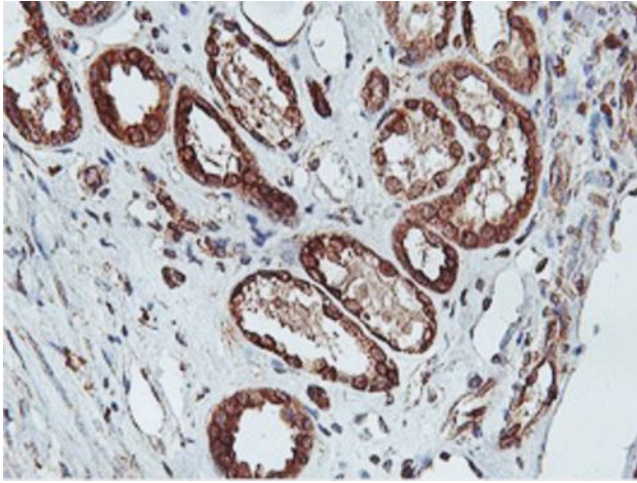
Western blot analysis of extracts (10ug) from a mouse cell line and 3 different mouse tissues by using anti-C20orf3 monoclonal antibody (1:200).



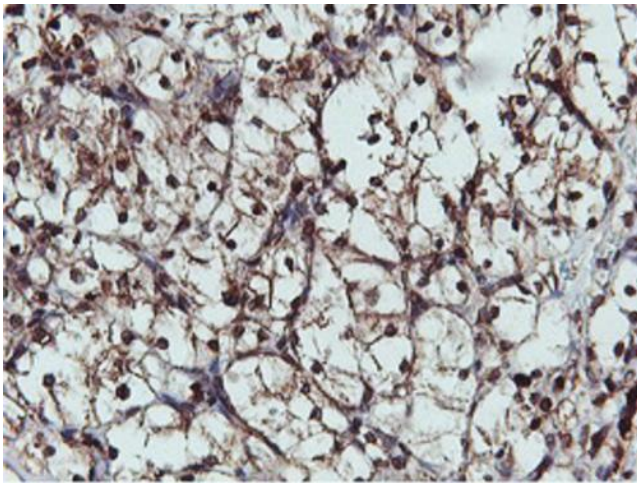
Western blot analysis of extracts (10ug) from 9 Human tissue by using anti-C20orf3 monoclonal antibody at 1:200 (1: Testis; 2: Omentum; 3: Uterus; 4: Breast; 5: Brain; 6: Liver; 7: Ovary; 8: Thyroid gland; 9: colon).



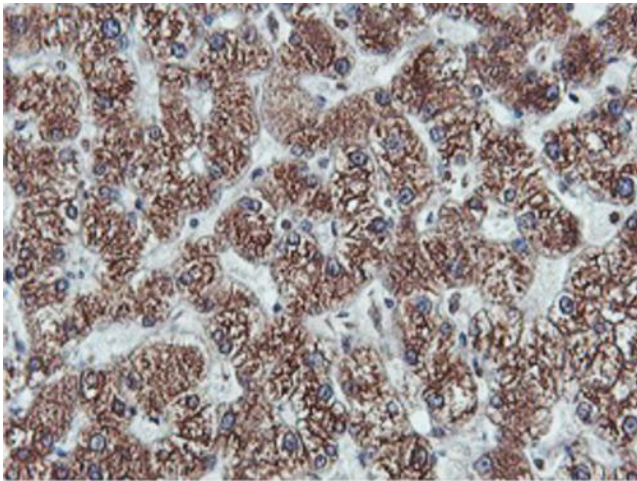
Immunohistochemical staining of paraffin-embedded Human breast tissue within the normal limits using anti-C20orf3 mouse monoclonal antibody. (Heat-induced epitope retrieval by 10mM citric buffer, pH6.0, 100°C for 10min, [TA504220])



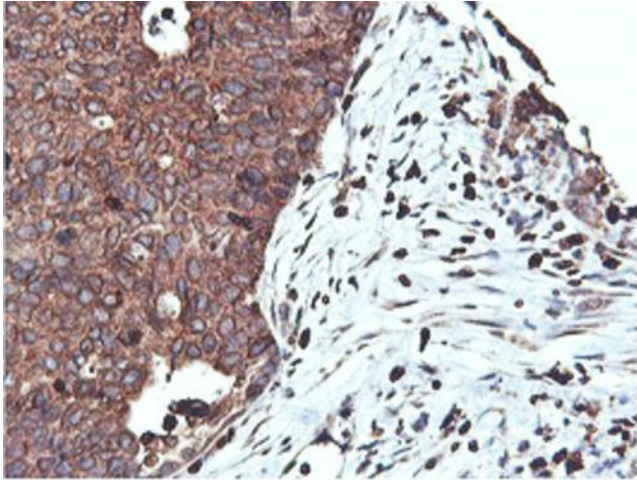
Immunohistochemical staining of paraffin-embedded Human Kidney tissue within the normal limits using anti-C20orf3 mouse monoclonal antibody. (Heat-induced epitope retrieval by 10mM citric buffer, pH6.0, 100°C for 10min, [TA504220])



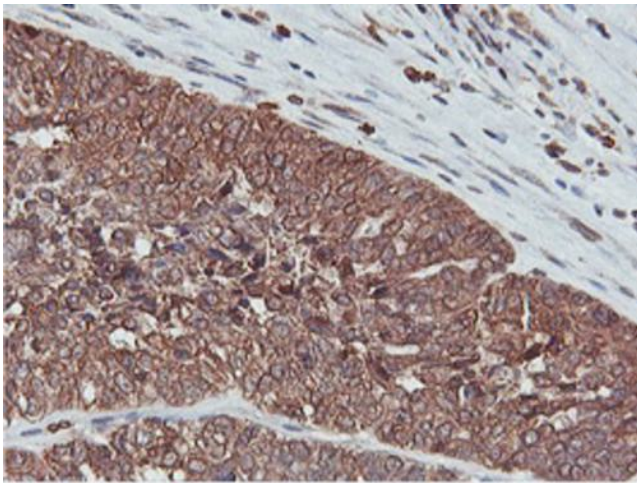
Immunohistochemical staining of paraffin-embedded Carcinoma of Human kidney tissue using anti-C20orf3 mouse monoclonal antibody. (Heat-induced epitope retrieval by 10mM citric buffer, pH6.0, 100°C for 10min, [TA504220])



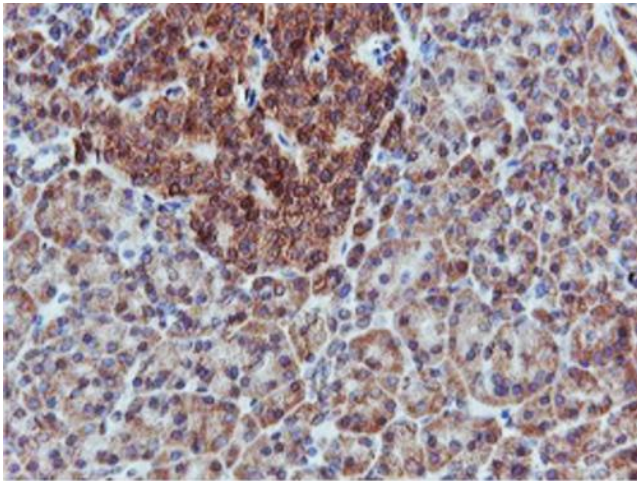
Immunohistochemical staining of paraffin-embedded Human liver tissue within the normal limits using anti-C20orf3 mouse monoclonal antibody. (Heat-induced epitope retrieval by 10mM citric buffer, pH6.0, 100°C for 10min, [TA504220])



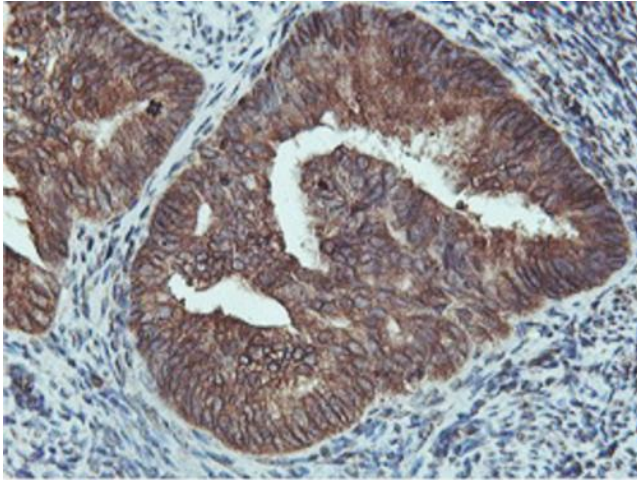
Immunohistochemical staining of paraffin-embedded Carcinoma of Human lung tissue using anti-C20orf3 mouse monoclonal antibody. (Heat-induced epitope retrieval by 10mM citric buffer, pH6.0, 100°C for 10min, [TA504220])



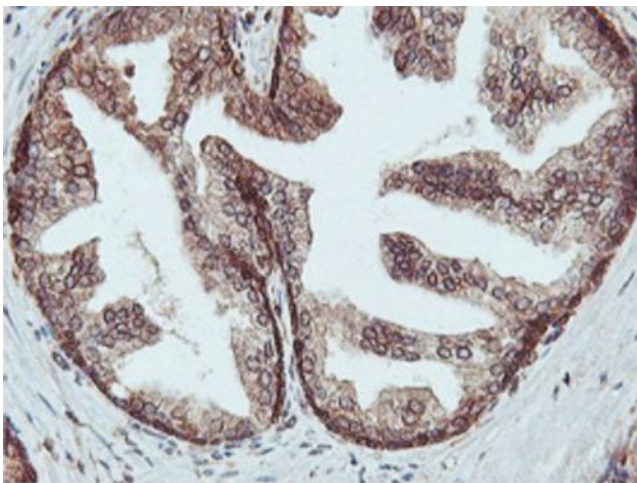
Immunohistochemical staining of paraffin-embedded Adenocarcinoma of Human ovary tissue using anti-C20orf3 mouse monoclonal antibody. (Heat-induced epitope retrieval by 10mM citric buffer, pH6.0, 100°C for 10min, [TA504220])



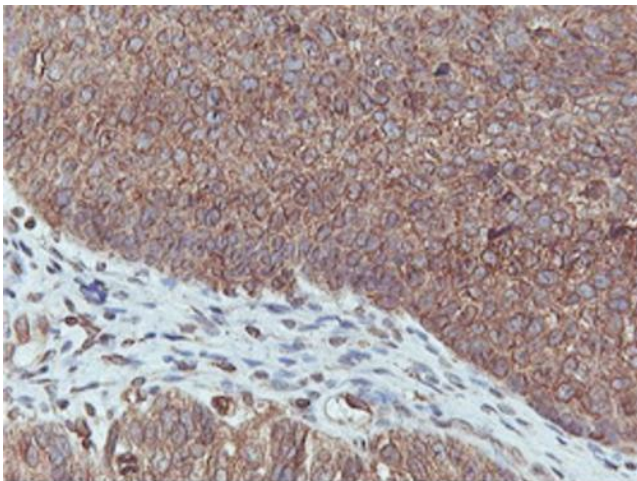
Immunohistochemical staining of paraffin-embedded Human pancreas tissue within the normal limits using anti-C20orf3 mouse monoclonal antibody. (Heat-induced epitope retrieval by 10mM citric buffer, pH6.0, 100°C for 10min, [TA504220])



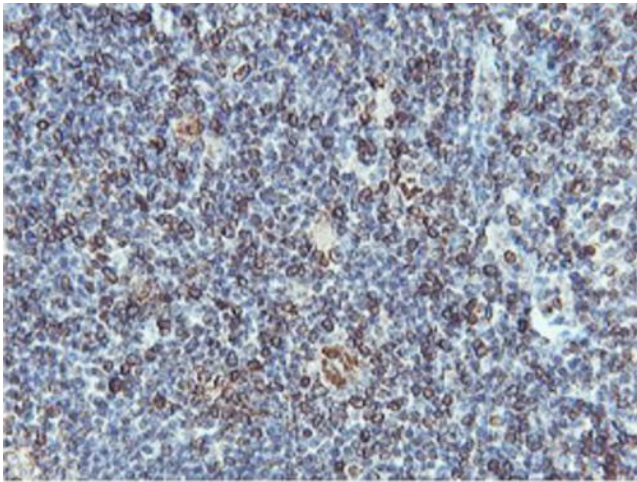
Immunohistochemical staining of paraffin-embedded Adenocarcinoma of Human endometrium tissue using anti-C20orf3 mouse monoclonal antibody. (Heat-induced epitope retrieval by 10mM citric buffer, pH6.0, 100°C for 10min, [TA504220])



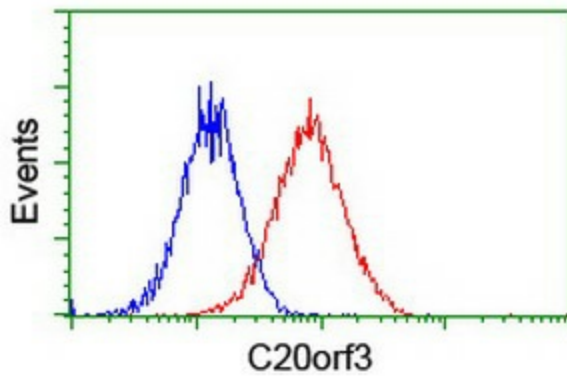
Immunohistochemical staining of paraffin-embedded Human prostate tissue within the normal limits using anti-C20orf3 mouse monoclonal antibody. (Heat-induced epitope retrieval by 10mM citric buffer, pH6.0, 100°C for 10min, [TA504220])



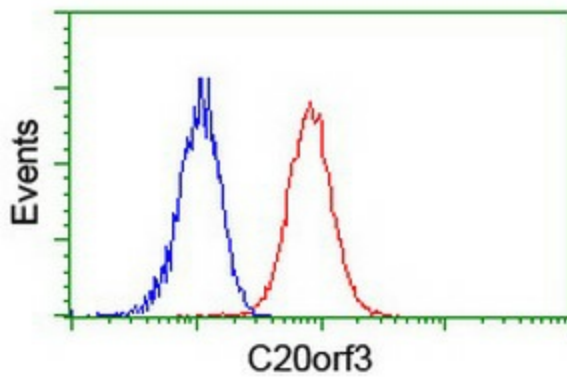
Immunohistochemical staining of paraffin-embedded Carcinoma of Human bladder tissue using anti-C20orf3 mouse monoclonal antibody. (Heat-induced epitope retrieval by 10mM citric buffer, pH6.0, 100°C for 10min, [TA504220])



Immunohistochemical staining of paraffin-embedded Human tonsil within the normal limits using anti-C20orf3 mouse monoclonal antibody. (Heat-induced epitope retrieval by 10mM citric buffer, pH6.0, 100°C for 10min, [TA504220])



Flow cytometric Analysis of HeLa cells, using anti-C20orf3 antibody ([TA504220]), (Red), compared to a nonspecific negative control antibody, (Blue).



Flow cytometric Analysis of Jurkat cells, using anti-C20orf3 antibody ([TA504220]), (Red), compared to a nonspecific negative control antibody, (Blue).