

## Product datasheet for **CF504031**

### **RGS16 Mouse Monoclonal Antibody [Clone ID: OTI4E5]**

#### **Product data:**

<b>Product Type:</b>	Primary Antibodies
<b>Clone Name:</b>	OTI4E5
<b>Applications:</b>	FC, IF, IHC, WB
<b>Recommended Dilution:</b>	WB 1:500~2000, IHC 1:150, IF 1:100, FLOW 1:100
<b>Reactivity:</b>	Human, Mouse, Rat
<b>Host:</b>	Mouse
<b>Isotype:</b>	IgG1
<b>Clonality:</b>	Monoclonal
<b>Immunogen:</b>	Full length human recombinant protein of human RGS16(NP_002919) produced in HEK293T cell.
<b>Formulation:</b>	Lyophilized powder (original buffer 1X PBS, pH 7.3, 8% trehalose)
<b>Reconstitution Method:</b>	For reconstitution, we recommend adding 100uL distilled water to a final antibody concentration of about 1 mg/mL. To use this carrier-free antibody for conjugation experiment, we strongly recommend performing another round of desalting process. (OriGene recommends Zeba Spin Desalting Columns, 7KMWCO from Thermo Scientific)
<b>Purification:</b>	Purified from mouse ascites fluids or tissue culture supernatant by affinity chromatography (protein A/G)
<b>Conjugation:</b>	Unconjugated
<b>Storage:</b>	Store at -20°C as received.
<b>Stability:</b>	Stable for 12 months from date of receipt.
<b>Predicted Protein Size:</b>	22.6 kDa
<b>Gene Name:</b>	regulator of G protein signaling 16
<b>Database Link:</b>	<a href="#">NP_002919</a> <a href="#">Entrez Gene 19734 Mouse</a> <a href="#">Entrez Gene 360857 Rat</a> <a href="#">Entrez Gene 6004 Human</a> <a href="#">O15492</a>



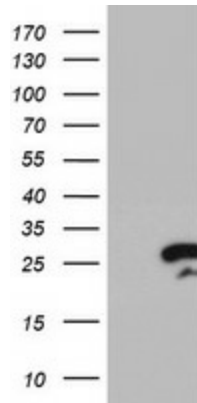
[View online »](#)

**Background:** The protein encoded by this gene belongs to the 'regulator of G protein signaling' family. It inhibits signal transduction by increasing the GTPase activity of G protein alpha subunits. It also may play a role in regulating the kinetics of signaling in the phototransduction cascade. [provided by RefSeq]

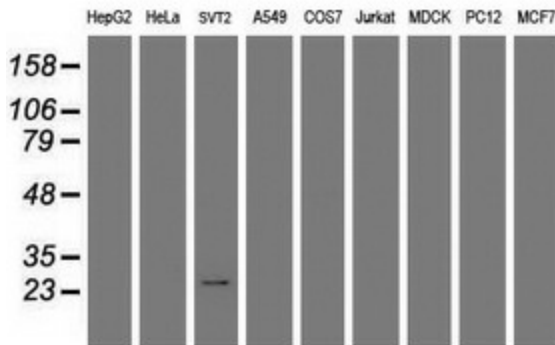
**Synonyms:** A28-RGS14; A28-RGS14P; RGS-R

**Protein Families:** Druggable Genome

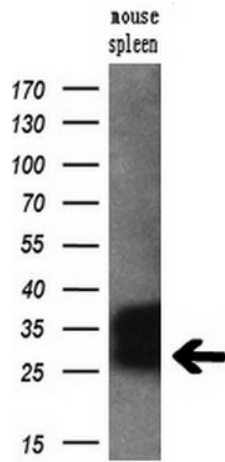
**Product images:**



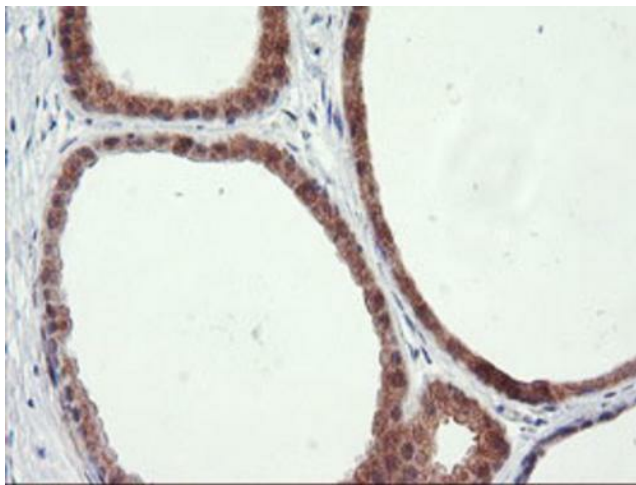
HEK293T cells were transfected with the pCMV6-ENTRY control (Cat# [PS100001], Left lane) or pCMV6-ENTRY RGS16 (Cat# [RC202430], Right lane) cDNA for 48 hrs and lysed. Equivalent amounts of cell lysates (5 ug per lane) were separated by SDS-PAGE and immunoblotted with anti-RGS16(Cat# [TA504031]). Positive lysates [LY419009] (100ug) and [LC419009] (20ug) can be purchased separately from OriGene.



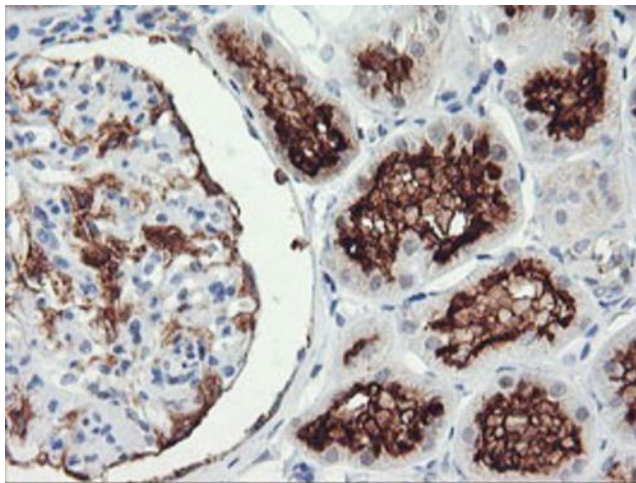
Western blot analysis of extracts (35ug) from 9 different cell lines by using anti-RGS16 monoclonal antibody.



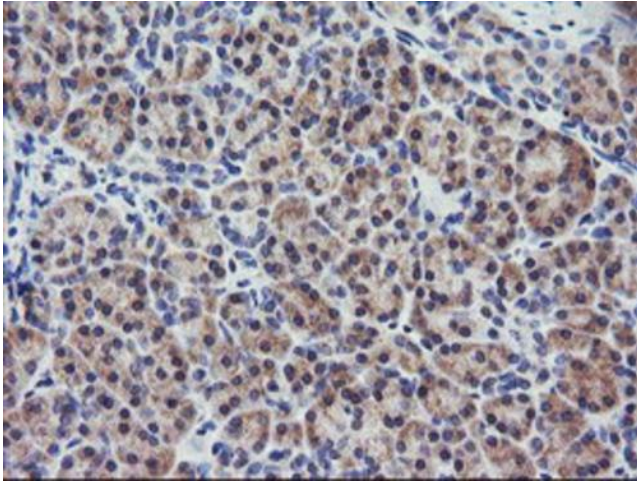
Western blot analysis of extracts (10ug) from a mouse tissue by using anti-RGS16 monoclonal antibody (1:200).



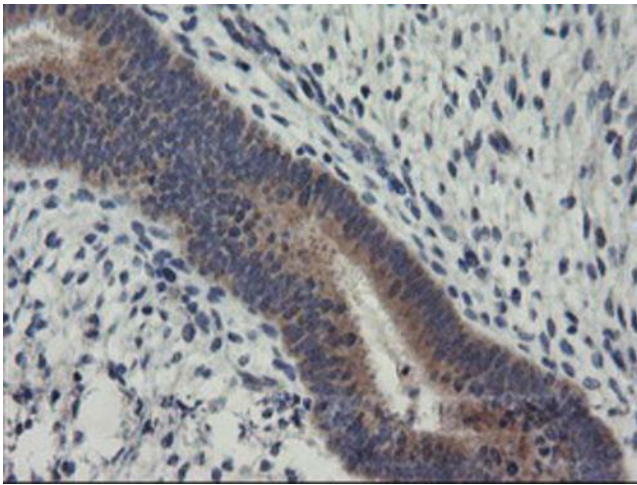
Immunohistochemical staining of paraffin-embedded Human breast tissue within the normal limits using anti-RGS16 mouse monoclonal antibody. (Heat-induced epitope retrieval by 10mM citric buffer, pH6.0, 100°C for 10min, [TA504031])



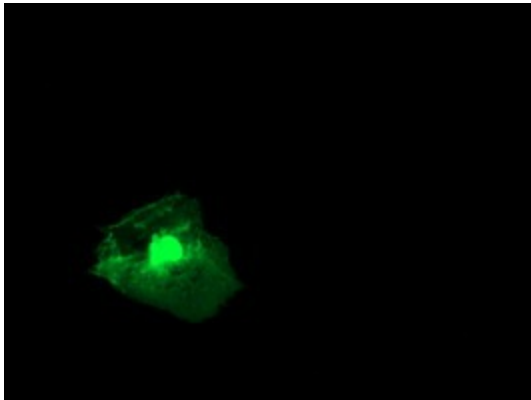
Immunohistochemical staining of paraffin-embedded Human Kidney tissue within the normal limits using anti-RGS16 mouse monoclonal antibody. (Heat-induced epitope retrieval by 10mM citric buffer, pH6.0, 100°C for 10min, [TA504031])



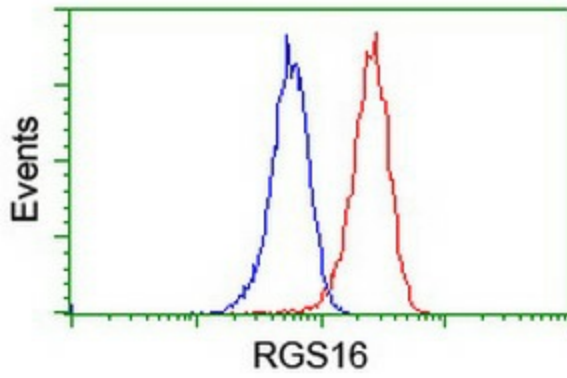
Immunohistochemical staining of paraffin-embedded Human pancreas tissue within the normal limits using anti-RGS16 mouse monoclonal antibody. (Heat-induced epitope retrieval by 10mM citric buffer, pH6.0, 100°C for 10min, [TA504031])



Immunohistochemical staining of paraffin-embedded Human endometrium tissue within the normal limits using anti-RGS16 mouse monoclonal antibody. (Heat-induced epitope retrieval by 10mM citric buffer, pH6.0, 100°C for 10min, [TA504031])



Anti-RGS16 mouse monoclonal antibody ([TA504031]) immunofluorescent staining of COS7 cells transiently transfected by pCMV6-ENTRY RGS16 ([RC202430]).



Flow cytometric Analysis of Jurkat cells, using anti-RGS16 antibody ([TA504031]), (Red), compared to a nonspecific negative control antibody, (Blue).