

## Product datasheet for **CF503939**

### TUBAL3 Mouse Monoclonal Antibody [Clone ID: OTI1C2]

#### Product data:

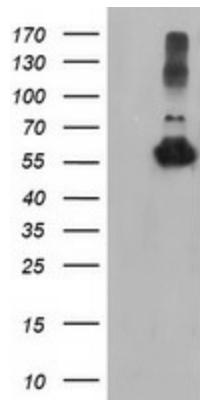
Product Type:	Primary Antibodies
Clone Name:	OTI1C2
Applications:	FC, IF, IHC, WB
Recommended Dilution:	WB 1:2000, IHC 1:150, IF 1:100, FLOW 1:100
Reactivity:	Human
Host:	Mouse
Isotype:	IgG2b
Clonality:	Monoclonal
Immunogen:	Human recombinant protein fragment corresponding to amino acids 150-446 of human TUBAL3(NP_079079) produced in E.coli.
Formulation:	Lyophilized powder (original buffer 1X PBS, pH 7.3, 8% trehalose)
Reconstitution Method:	For reconstitution, we recommend adding 100uL distilled water to a final antibody concentration of about 1 mg/mL. To use this carrier-free antibody for conjugation experiment, we strongly recommend performing another round of desalting process. (OriGene recommends Zeba Spin Desalting Columns, 7KMWCO from Thermo Scientific)
Purification:	Purified from mouse ascites fluids or tissue culture supernatant by affinity chromatography (protein A/G)
Conjugation:	Unconjugated
Storage:	Store at -20°C as received.
Stability:	Stable for 12 months from date of receipt.
Predicted Protein Size:	49.7 kDa
Gene Name:	tubulin alpha like 3
Database Link:	<a href="#">NP_079079</a> <a href="#">Entrez Gene 79861 Human</a> <a href="#">A6NHL2</a>
Synonyms:	FLJ21665; MGC119347; MGC119349
Protein Families:	Druggable Genome



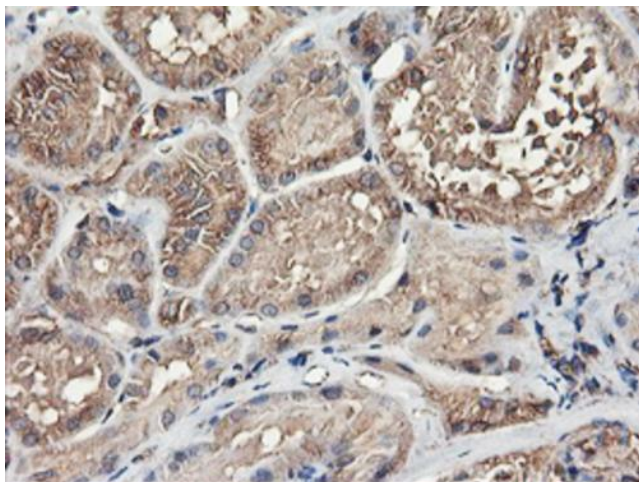
[View online »](#)

Protein Pathways: Gap junction, Pathogenic Escherichia coli infection

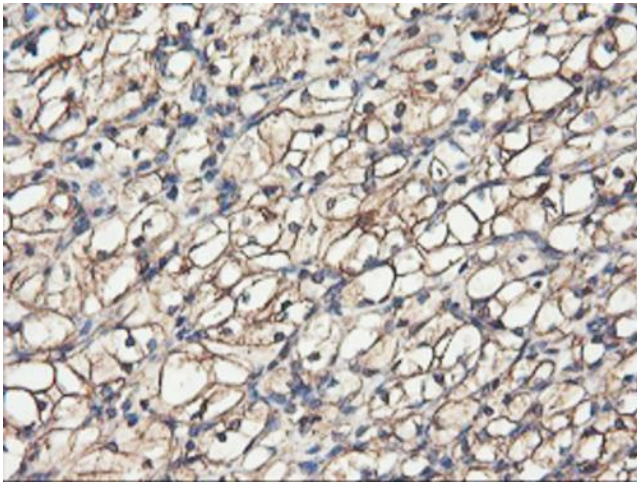
### Product images:



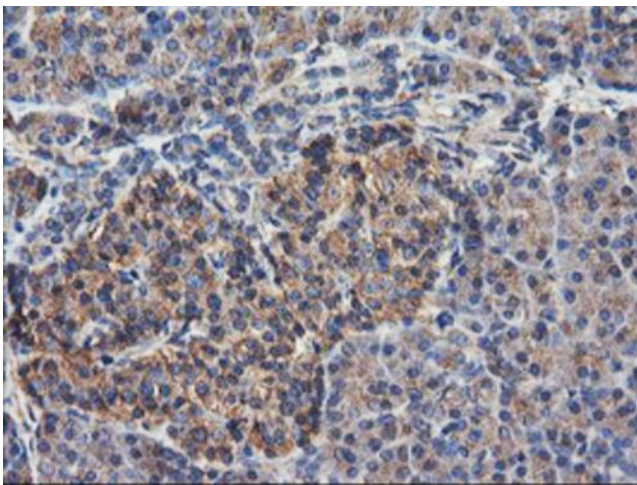
HEK293T cells were transfected with the pCMV6-ENTRY control (Left lane) or pCMV6-ENTRY TUBAL3 ([RC216194], Right lane) cDNA for 48 hrs and lysed. Equivalent amounts of cell lysates (5 ug per lane) were separated by SDS-PAGE and immunoblotted with anti-TUBAL3. Positive lysates [LY411058] (100ug) and [LC411058] (20ug) can be purchased separately from OriGene.



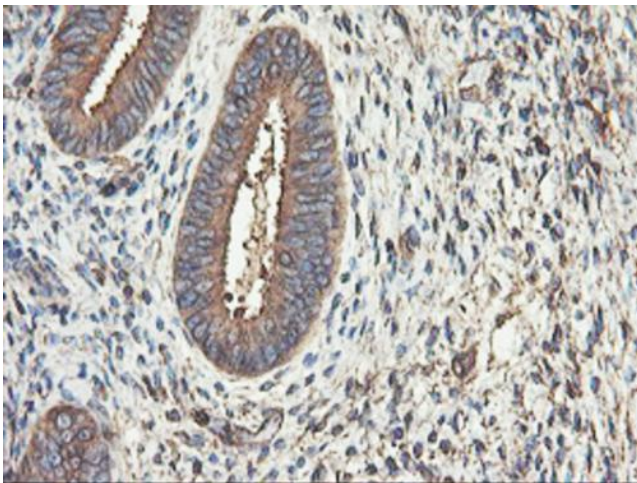
Immunohistochemical staining of paraffin-embedded Human Kidney tissue within the normal limits using anti-TUBAL3 mouse monoclonal antibody. (Heat-induced epitope retrieval by 10mM citric buffer, pH6.0, 100°C for 10min, [TA503939])



Immunohistochemical staining of paraffin-embedded Carcinoma of Human kidney tissue using anti-TUBAL3 mouse monoclonal antibody. (Heat-induced epitope retrieval by 10mM citric buffer, pH6.0, 100°C for 10min, [TA503939])

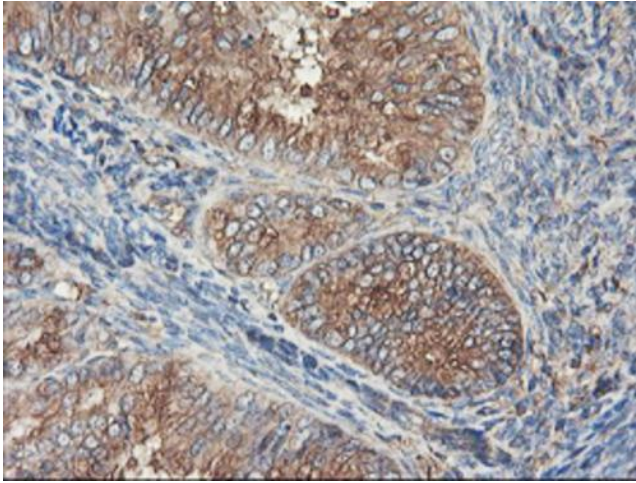


Immunohistochemical staining of paraffin-embedded Human pancreas tissue within the normal limits using anti-TUBAL3 mouse monoclonal antibody. (Heat-induced epitope retrieval by 10mM citric buffer, pH6.0, 100°C for 10min, [TA503939])

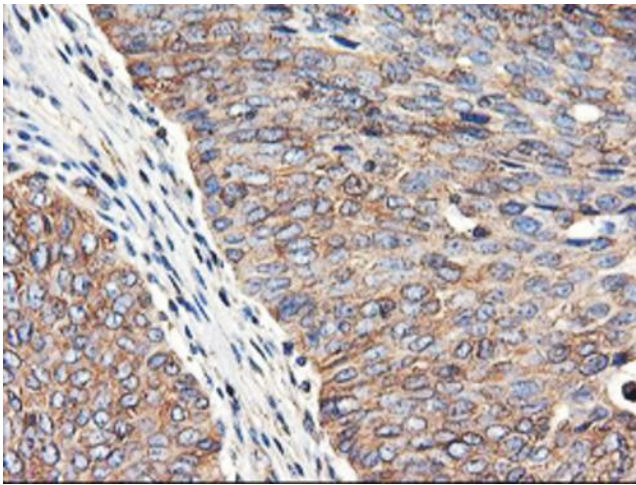


Immunohistochemical staining of paraffin-embedded Human endometrium tissue within the normal limits using anti-TUBAL3 mouse monoclonal antibody. (Heat-induced epitope retrieval by 10mM citric buffer, pH6.0, 100°C for 10min, [TA503939])

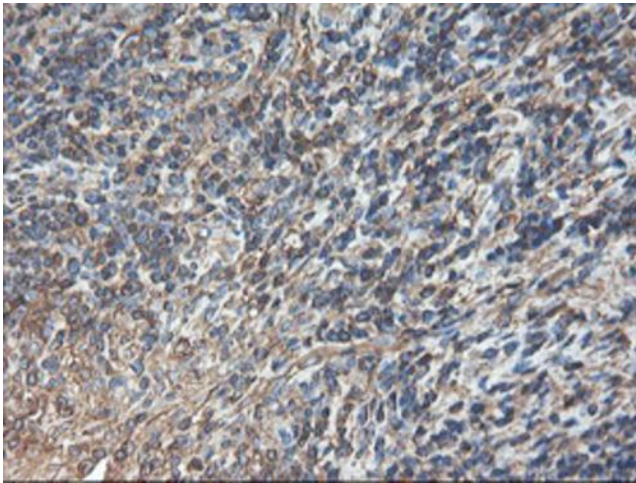




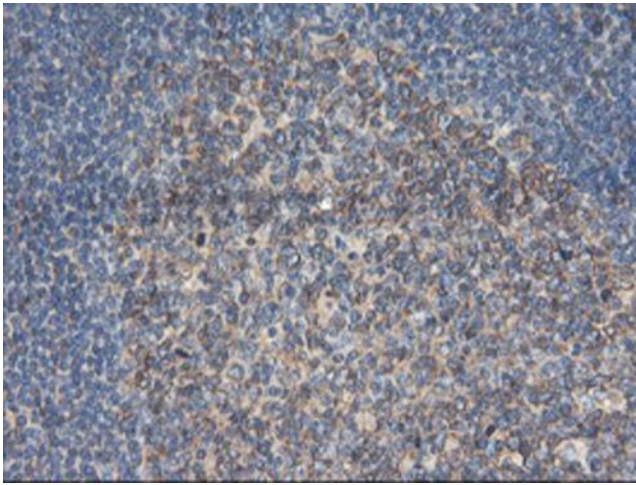
Immunohistochemical staining of paraffin-embedded Adenocarcinoma of Human endometrium tissue using anti-TUBAL3 mouse monoclonal antibody. (Heat-induced epitope retrieval by 10mM citric buffer, pH6.0, 100°C for 10min, [TA503939])



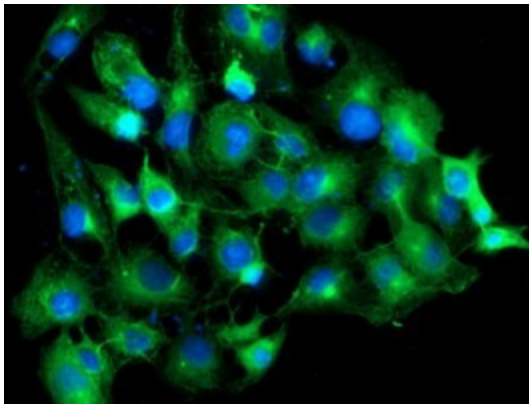
Immunohistochemical staining of paraffin-embedded Carcinoma of Human bladder tissue using anti-TUBAL3 mouse monoclonal antibody. (Heat-induced epitope retrieval by 10mM citric buffer, pH6.0, 100°C for 10min, [TA503939])



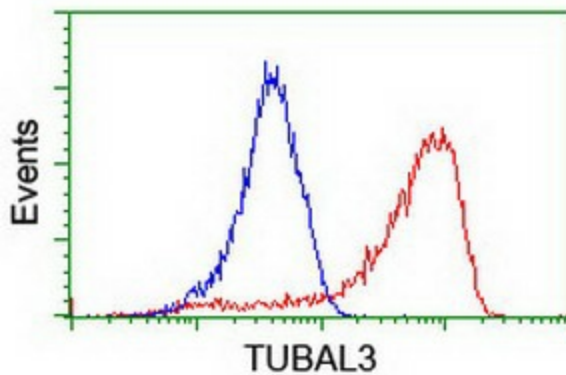
Immunohistochemical staining of paraffin-embedded Human lymphoma tissue using anti-TUBAL3 mouse monoclonal antibody. (Heat-induced epitope retrieval by 10mM citric buffer, pH6.0, 100°C for 10min, [TA503939])



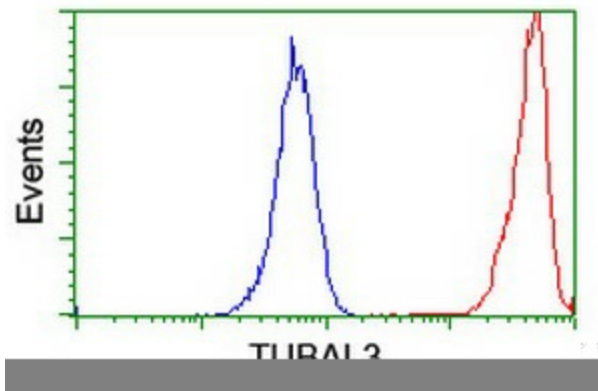
Immunohistochemical staining of paraffin-embedded Human tonsil within the normal limits using anti-TUBAL3 mouse monoclonal antibody. (Heat-induced epitope retrieval by 10mM citric buffer, pH6.0, 100°C for 10min, [TA503939])



Anti-TUBAL3 mouse monoclonal antibody ([TA503939]) immunofluorescent staining of COS7 cells transiently transfected by pCMV6-ENTRY TUBAL3 ([RC216194]).



Flow cytometric Analysis of HeLa cells, using anti-TUBAL3 antibody ([TA503939]), (Red), compared to a nonspecific negative control antibody, (Blue).



Flow cytometric Analysis of Jurkat cells, using anti-TUBAL3 antibody ([TA503939]), (Red), compared to a nonspecific negative control antibody, (Blue).