

Product datasheet for **CF503866**

HARS2 Mouse Monoclonal Antibody [Clone ID: OTI6F9]

Product data:

Product Type:	Primary Antibodies
Clone Name:	OTI6F9
Applications:	FC, IHC, WB
Recommended Dilution:	WB 1:2000, IHC 1:150, FLOW 1:100
Reactivity:	Human
Host:	Mouse
Isotype:	IgG2b
Clonality:	Monoclonal
Immunogen:	Full length human recombinant protein of human HARS2(NP_036340) produced in HEK293T cell.
Formulation:	Lyophilized powder (original buffer 1X PBS, pH 7.3, 8% trehalose)
Reconstitution Method:	For reconstitution, we recommend adding 100uL distilled water to a final antibody concentration of about 1 mg/mL. To use this carrier-free antibody for conjugation experiment, we strongly recommend performing another round of desalting process. (OriGene recommends Zeba Spin Desalting Columns, 7KMWCO from Thermo Scientific)
Purification:	Purified from mouse ascites fluids or tissue culture supernatant by affinity chromatography (protein A/G)
Conjugation:	Unconjugated
Storage:	Store at -20°C as received.
Stability:	Stable for 12 months from date of receipt.
Predicted Protein Size:	53.3 kDa
Gene Name:	histidyl-tRNA synthetase 2, mitochondrial
Database Link:	NP_036340 Entrez Gene 23438 Human P49590



[View online »](#)

Background:

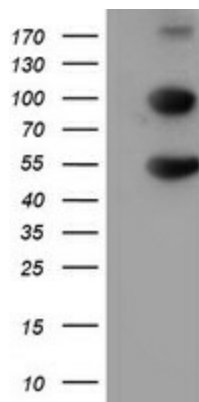
Aminoacyl-tRNA synthetases are a class of enzymes that charge tRNAs with their cognate amino acids. The protein encoded by this gene is an enzyme belonging to the class II family of aminoacyl-tRNA synthetases. Functioning in the synthesis of histidyl-transfer RNA, the enzyme plays an accessory role in the regulation of protein biosynthesis. The gene is located in a head-to-head orientation with HARS on chromosome five, where the homologous genes share a bidirectional promoter. [provided by RefSeq]. COMPLETENESS: full length.

Synonyms:

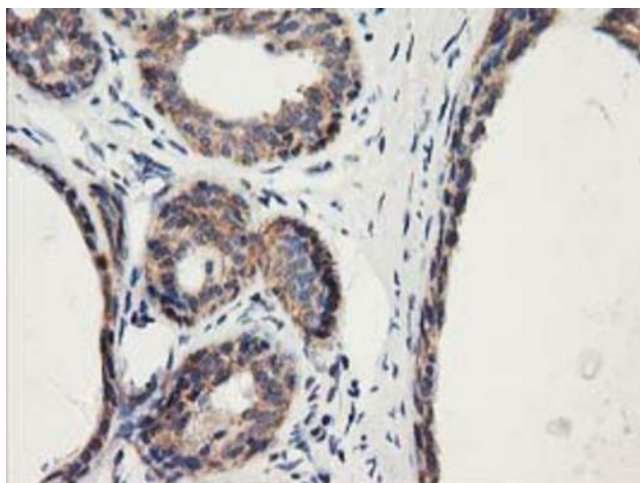
HARSL; HARSR; HO3; PRLTS2

Protein Pathways:

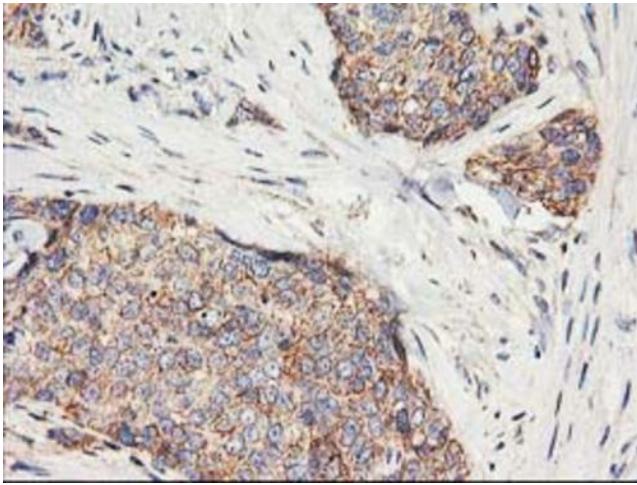
Aminoacyl-tRNA biosynthesis

Product images:

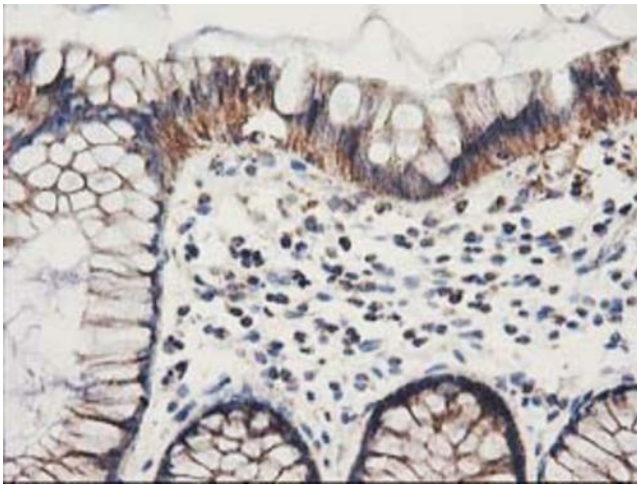
HEK293T cells were transfected with the pCMV6-ENTRY control (Cat# [PS100001], Left lane) or pCMV6-ENTRY HARS2 (Cat# [RC204925], Right lane) cDNA for 48 hrs and lysed. Equivalent amounts of cell lysates (5 ug per lane) were separated by SDS-PAGE and immunoblotted with anti-HARS2 (Cat# [TA503866]). Positive lysates [LY415917] (100ug) and [LC415917] (20ug) can be purchased separately from OriGene.



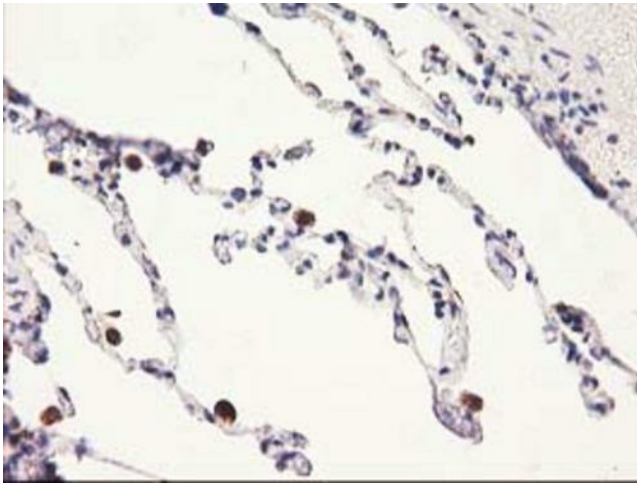
Immunohistochemical staining of paraffin-embedded Human breast tissue within the normal limits using anti-HARS2 mouse monoclonal antibody. (Heat-induced epitope retrieval by 10mM citric buffer, pH6.0, 100°C for 10min, [TA503866])



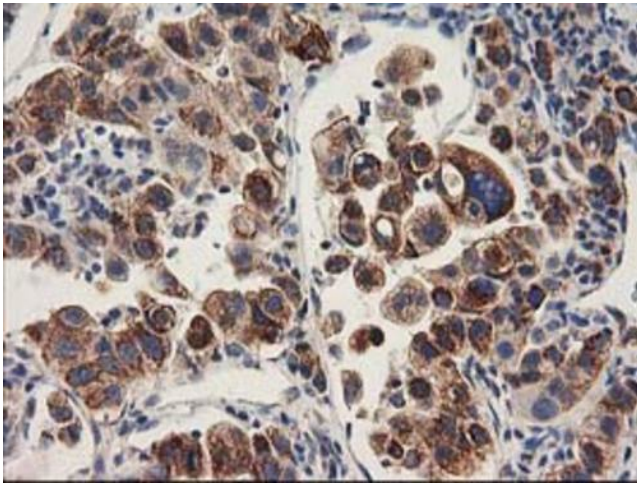
Immunohistochemical staining of paraffin-embedded Adenocarcinoma of Human breast tissue using anti-HARS2 mouse monoclonal antibody. (Heat-induced epitope retrieval by 10mM citric buffer, pH6.0, 100°C for 10min, [TA503866])



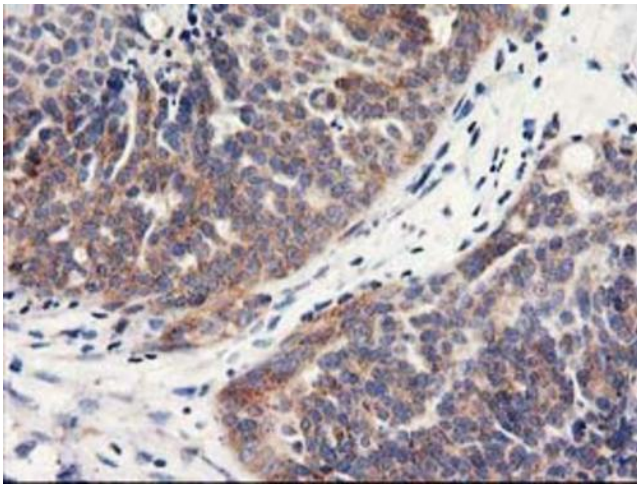
Immunohistochemical staining of paraffin-embedded Human colon tissue within the normal limits using anti-HARS2 mouse monoclonal antibody. (Heat-induced epitope retrieval by 10mM citric buffer, pH6.0, 100°C for 10min, [TA503866])



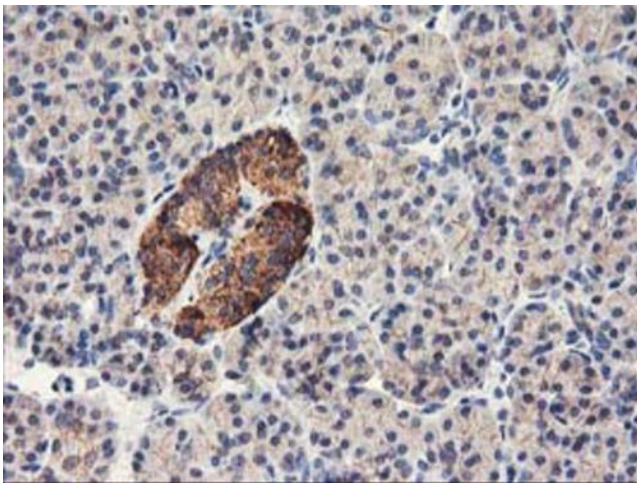
Immunohistochemical staining of paraffin-embedded Human lung tissue within the normal limits using anti-HARS2 mouse monoclonal antibody. (Heat-induced epitope retrieval by 10mM citric buffer, pH6.0, 100°C for 10min, [TA503866])



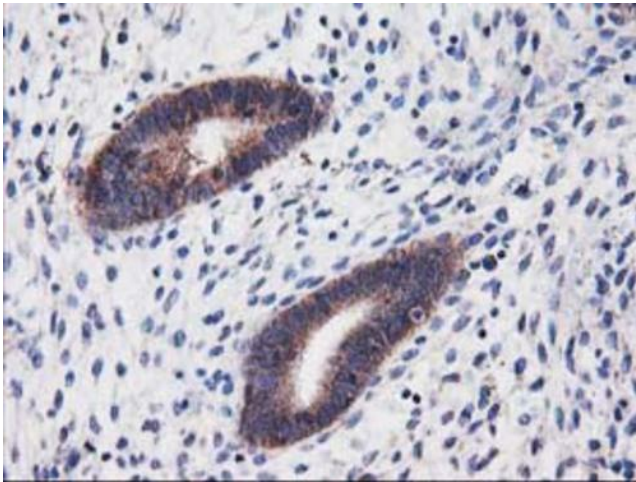
Immunohistochemical staining of paraffin-embedded Carcinoma of Human lung tissue using anti-HARS2 mouse monoclonal antibody. (Heat-induced epitope retrieval by 10mM citric buffer, pH6.0, 100°C for 10min, [TA503866])



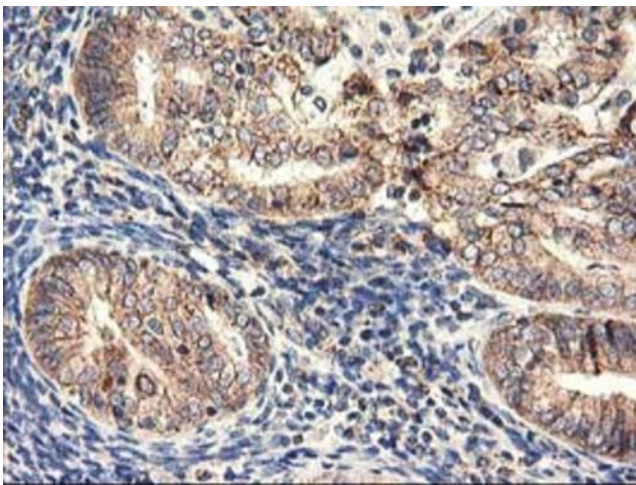
Immunohistochemical staining of paraffin-embedded Adenocarcinoma of Human ovary tissue using anti-HARS2 mouse monoclonal antibody. (Heat-induced epitope retrieval by 10mM citric buffer, pH6.0, 100°C for 10min, [TA503866])



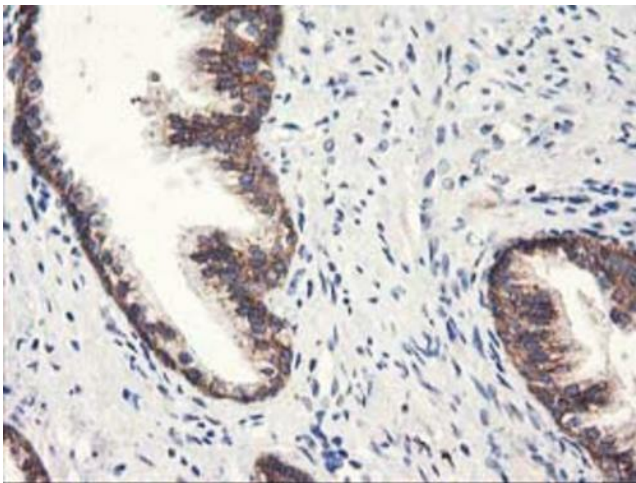
Immunohistochemical staining of paraffin-embedded Human pancreas tissue within the normal limits using anti-HARS2 mouse monoclonal antibody. (Heat-induced epitope retrieval by 10mM citric buffer, pH6.0, 100°C for 10min, [TA503866])



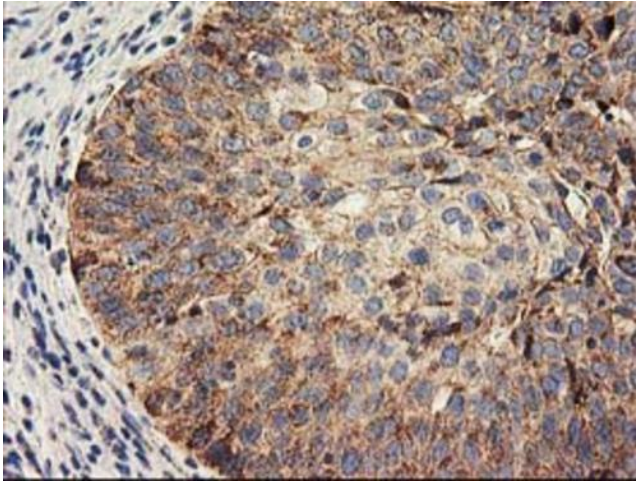
Immunohistochemical staining of paraffin-embedded Human endometrium tissue within the normal limits using anti-HARS2 mouse monoclonal antibody. (Heat-induced epitope retrieval by 10mM citric buffer, pH6.0, 100°C for 10min, [TA503866])



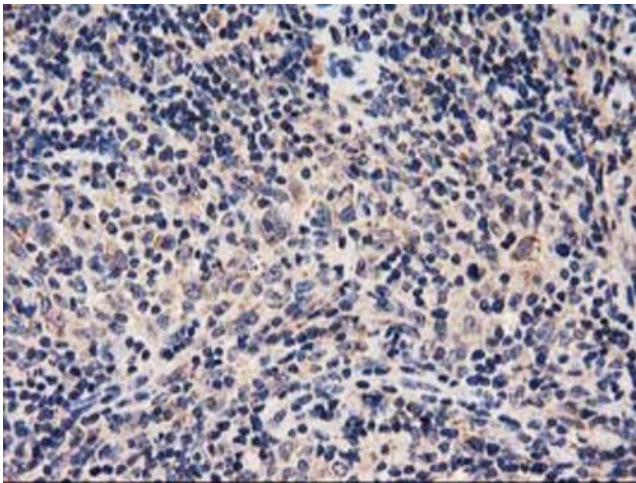
Immunohistochemical staining of paraffin-embedded Adenocarcinoma of Human endometrium tissue using anti-HARS2 mouse monoclonal antibody. (Heat-induced epitope retrieval by 10mM citric buffer, pH6.0, 100°C for 10min, [TA503866])



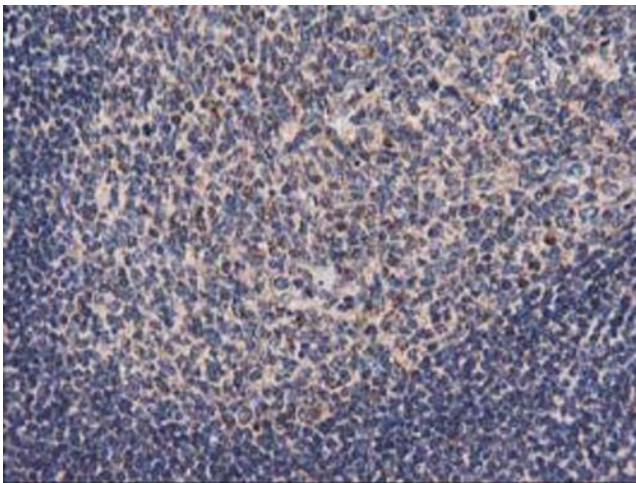
Immunohistochemical staining of paraffin-embedded Human prostate tissue within the normal limits using anti-HARS2 mouse monoclonal antibody. (Heat-induced epitope retrieval by 10mM citric buffer, pH6.0, 100°C for 10min, [TA503866])



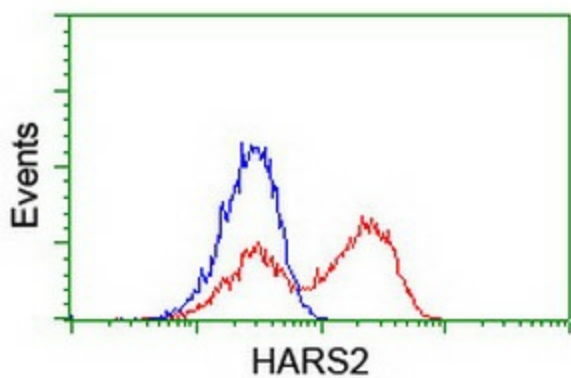
Immunohistochemical staining of paraffin-embedded Carcinoma of Human bladder tissue using anti-HARS2 mouse monoclonal antibody. (Heat-induced epitope retrieval by 10mM citric buffer, pH6.0, 100°C for 10min, [TA503866])



Immunohistochemical staining of paraffin-embedded Human lymphoma tissue using anti-HARS2 mouse monoclonal antibody. (Heat-induced epitope retrieval by 10mM citric buffer, pH6.0, 100°C for 10min, [TA503866])



Immunohistochemical staining of paraffin-embedded Human tonsil within the normal limits using anti-HARS2 mouse monoclonal antibody. (Heat-induced epitope retrieval by 10mM citric buffer, pH6.0, 100°C for 10min, [TA503866])



HEK293T cells transfected with either [RC204925] overexpress plasmid (Red) or empty vector control plasmid (Blue) were immunostained by anti-HARS2 antibody ([TA503866]), and then analyzed by flow cytometry.