

## Product datasheet for **CF503854**

### ARH (LDLRAP1) Mouse Monoclonal Antibody [Clone ID: OTI7E11]

#### Product data:

Product Type:	Primary Antibodies
Clone Name:	OTI7E11
Applications:	FC, IF, IHC, WB
Recommended Dilution:	WB 1:2000, IHC 1:150, IF 1:100, FLOW 1:100
Reactivity:	Human, Mouse, Rat
Host:	Mouse
Isotype:	IgG1
Clonality:	Monoclonal
Immunogen:	Full length human recombinant protein of human LDLRAP1(NP_056442) produced in HEK293T cell.
Formulation:	Lyophilized powder (original buffer 1X PBS, pH 7.3, 8% trehalose)
Reconstitution Method:	For reconstitution, we recommend adding 100uL distilled water to a final antibody concentration of about 1 mg/mL. To use this carrier-free antibody for conjugation experiment, we strongly recommend performing another round of desalting process. (OriGene recommends Zeba Spin Desalting Columns, 7KMWCO from Thermo Scientific)
Purification:	Purified from mouse ascites fluids or tissue culture supernatant by affinity chromatography (protein A/G)
Conjugation:	Unconjugated
Storage:	Store at -20°C as received.
Stability:	Stable for 12 months from date of receipt.
Predicted Protein Size:	33.7 kDa
Gene Name:	low density lipoprotein receptor adaptor protein 1
Database Link:	<a href="#">NP_056442</a> <a href="#">Entrez Gene 100017</a> <a href="#">MouseEntrez Gene 500564</a> <a href="#">RatEntrez Gene 26119</a> <a href="#">Human Q5SW96</a>



[View online »](#)

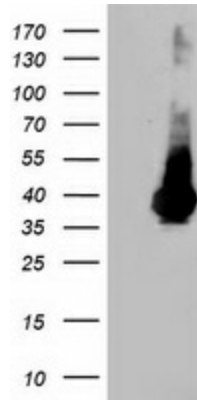
**Background:** The protein encoded by this gene is a cytosolic protein which contains a phosphotyrosine binding (PTD) domain. The PTD domain has been found to interact with the cytoplasmic tail of the LDL receptor. Mutations in this gene lead to LDL receptor malfunction and cause the disorder autosomal recessive hypercholesterolaemia. [provided by RefSeq, Jul 2008]

**Synonyms:** ARH; ARH1; ARH2; FHCB1; FHCB2

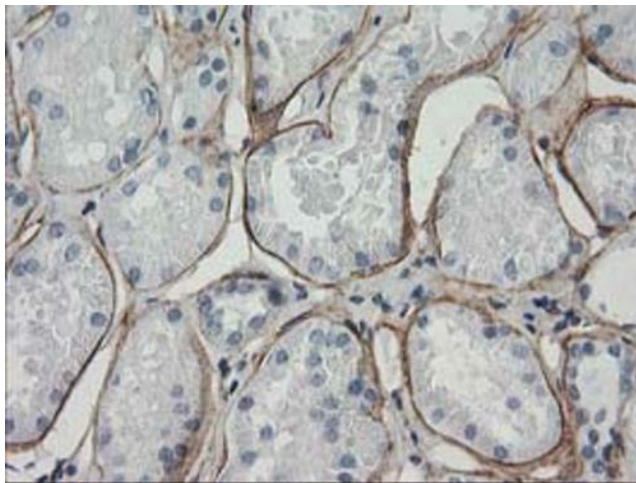
**Protein Families:** Druggable Genome

**Protein Pathways:** Endocytosis

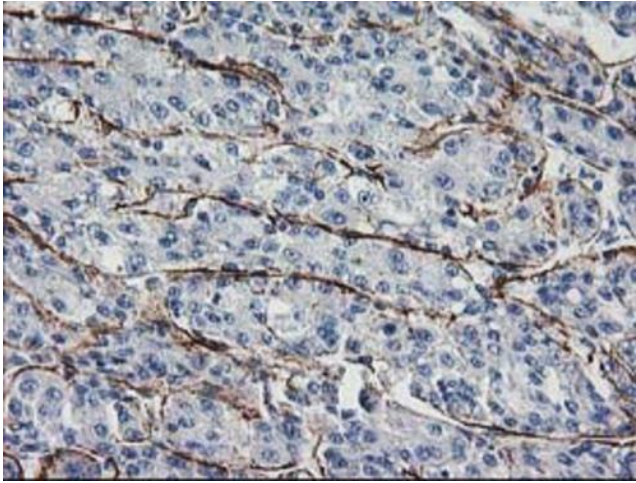
**Product images:**



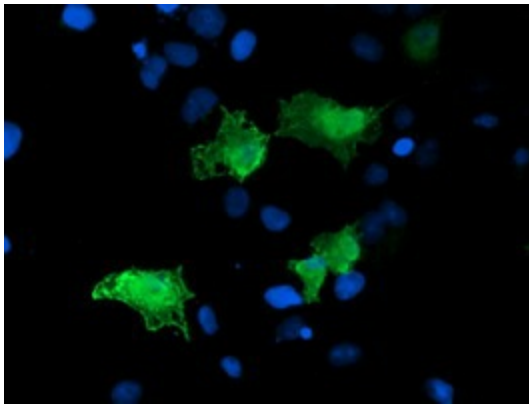
HEK293T cells were transfected with the pCMV6-ENTRY control (Cat# [PS100001], Left lane) or pCMV6-ENTRY LDLRAP1 (Cat# [RC206643], Right lane) cDNA for 48 hrs and lysed. Equivalent amounts of cell lysates (5 ug per lane) were separated by SDS-PAGE and immunoblotted with anti-LDLRAP1 (Cat# [TA503854]). Positive lysates [LY414462] (100ug) and [LC414462] (20ug) can be purchased separately from OriGene.



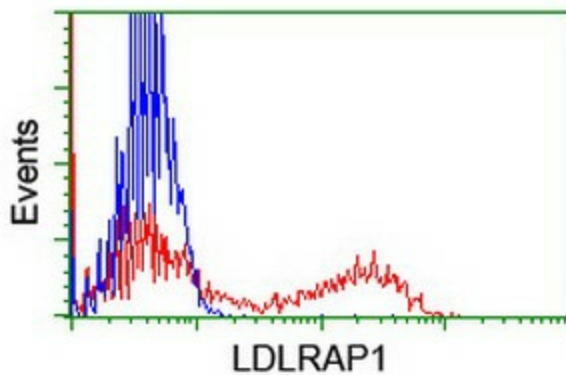
Immunohistochemical staining of paraffin-embedded Human Kidney tissue within the normal limits using anti-LDLRAP1 mouse monoclonal antibody. (Heat-induced epitope retrieval by 10mM citric buffer, pH6.0, 100°C for 10min, [TA503854])



Immunohistochemical staining of paraffin-embedded Carcinoma of Human liver tissue using anti-LDLRAP1 mouse monoclonal antibody. (Heat-induced epitope retrieval by 10mM citric buffer, pH6.0, 100°C for 10min, [TA503854])



Anti-LDLRAP1 mouse monoclonal antibody ([TA503854]) immunofluorescent staining of COS7 cells transiently transfected by pCMV6-ENTRY LDLRAP1 ([RC206643]).



HEK293T cells transfected with either [RC206643] overexpress plasmid (Red) or empty vector control plasmid (Blue) were immunostained by anti-LDLRAP1 antibody ([TA503854]), and then analyzed by flow cytometry.