

## Product datasheet for **CF502771**

### FGF21 Mouse Monoclonal Antibody [Clone ID: OTI4B2]

#### Product data:

Product Type:	Primary Antibodies
Clone Name:	OTI4B2
Applications:	FC, IF, WB
Recommended Dilution:	WB 1:2000, IF 1:100, FLOW 1:100
Reactivity:	Human
Host:	Mouse
Isotype:	IgG1
Clonality:	Monoclonal
Immunogen:	Human recombinant protein fragment corresponding to amino acids 29-209 of human FGF21 (NP_061986) produced in E.coli.
Formulation:	Lyophilized powder (original buffer 1X PBS, pH 7.3, 8% trehalose)
Reconstitution Method:	For reconstitution, we recommend adding 100uL distilled water to a final antibody concentration of about 1 mg/mL. To use this carrier-free antibody for conjugation experiment, we strongly recommend performing another round of desalting process. (OriGene recommends Zeba Spin Desalting Columns, 7KMWCO from Thermo Scientific)
Purification:	Purified from mouse ascites fluids or tissue culture supernatant by affinity chromatography (protein A/G)
Conjugation:	Unconjugated
Storage:	Store at -20°C as received.
Stability:	Stable for 12 months from date of receipt.
Predicted Protein Size:	19.4 kDa
Gene Name:	fibroblast growth factor 21
Database Link:	<a href="#">NP_061986</a> <a href="#">Entrez Gene 26291 Human</a> <a href="#">Q9NSA1</a>



[View online »](#)

**Background:**

The protein encoded by this gene is a member of the fibroblast growth factor (FGF) family. FGF family members possess broad mitogenic and cell survival activities and are involved in a variety of biological processes including embryonic development, cell growth, morphogenesis, tissue repair, tumor growth and invasion. The function of this growth factor has not yet been determined. [provided by RefSeq]

**Synonyms:**

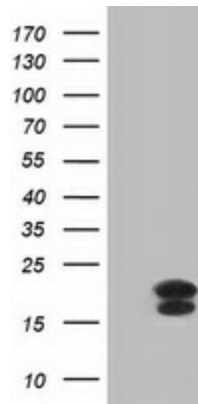
fibroblast growth factor 21

**Protein Families:**

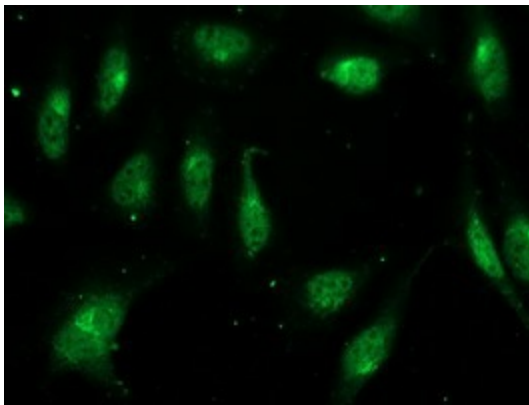
Adult stem cells, Embryonic stem cells, ES Cell Differentiation/IPS, Secreted Protein

**Protein Pathways:**

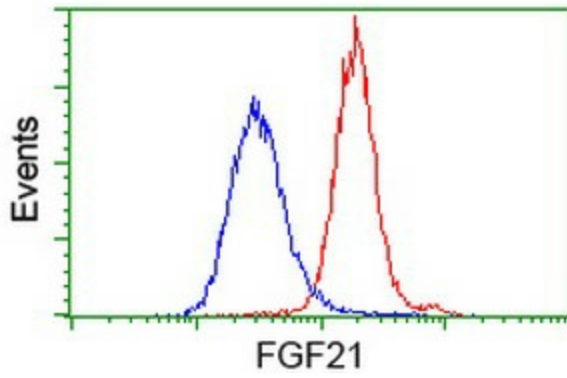
MAPK signaling pathway, Melanoma, Pathways in cancer, Regulation of actin cytoskeleton

**Product images:**


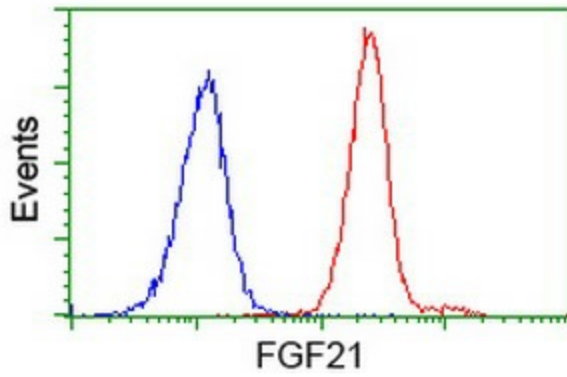
HEK293T cells were transfected with the pCMV6-ENTRY control (Left lane) or pCMV6-ENTRY FGF21 ([RC204538], Right lane) cDNA for 48 hrs and lysed. Equivalent amounts of cell lysates (5 ug per lane) were separated by SDS-PAGE and immunoblotted with anti-FGF21. Positive lysates [LY412740] (100ug) and [LC412740] (20ug) can be purchased separately from OriGene.



Immunofluorescent staining of HeLa cells using anti-FGF21 mouse monoclonal antibody ([TA502771]).



Flow cytometric Analysis of HeLa cells, using anti-FGF21 antibody ([TA502771]), (Red), compared to a nonspecific negative control antibody, (Blue).



Flow cytometric Analysis of Jurkat cells, using anti-FGF21 antibody ([TA502771]), (Red), compared to a nonspecific negative control antibody, (Blue).