

## Product datasheet for **CF502386**

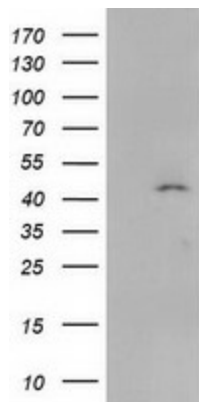
### SERPINB4 Mouse Monoclonal Antibody [Clone ID: OTI4C8]

#### Product data:

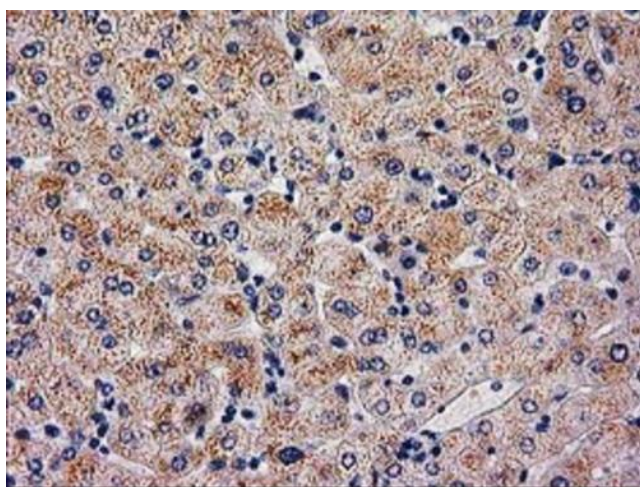
Product Type:	Primary Antibodies
Clone Name:	OTI4C8
Applications:	IHC, WB
Recommended Dilution:	WB 1:500, IHC 1:150
Reactivity:	Human
Host:	Mouse
Isotype:	IgG1
Clonality:	Monoclonal
Immunogen:	Full length human recombinant protein of human SERPINB4 (NP_002965) produced in HEK293T cell.
Formulation:	Lyophilized powder (original buffer 1X PBS, pH 7.3, 8% trehalose)
Reconstitution Method:	For reconstitution, we recommend adding 100uL distilled water to a final antibody concentration of about 1 mg/mL. To use this carrier-free antibody for conjugation experiment, we strongly recommend performing another round of desalting process. (OriGene recommends Zeba Spin Desalting Columns, 7KMWCO from Thermo Scientific)
Purification:	Purified from mouse ascites fluids or tissue culture supernatant by affinity chromatography (protein A/G)
Conjugation:	Unconjugated
Storage:	Store at -20°C as received.
Stability:	Stable for 12 months from date of receipt.
Predicted Protein Size:	44.7 kDa
Gene Name:	serpin family B member 4
Database Link:	<a href="#">NP_002965</a> <a href="#">Entrez Gene 6318 Human P48594</a>
Synonyms:	LEUPIN; PI11; SCCA-2; SCCA1; SCCA2
Protein Families:	Druggable Genome, Secreted Protein



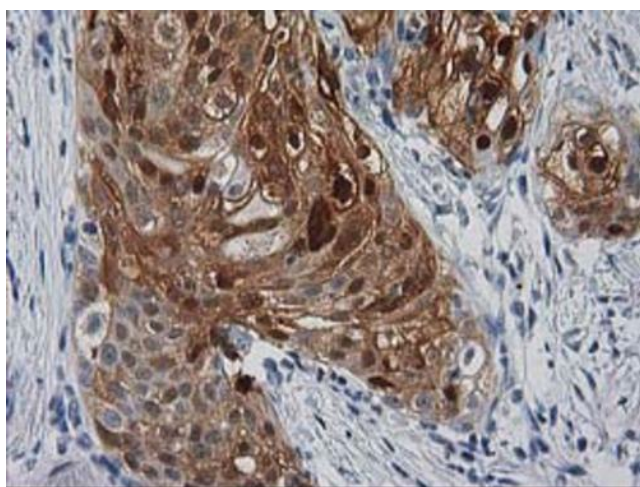
[View online »](#)

**Product images:**

HEK293T cells were transfected with the pCMV6-ENTRY control (Cat# [PS100001], Left lane) or pCMV6-ENTRY SERPINB4 (Cat# [RC205612], Right lane) cDNA for 48 hrs and lysed. Equivalent amounts of cell lysates (5 ug per lane) were separated by SDS-PAGE and immunoblotted with anti-SERPINB4 (Cat# [TA502386]). Positive lysates [LY418979] (100ug) and [LC418979] (20ug) can be purchased separately from OriGene.



Immunohistochemical staining of paraffin-embedded Human liver tissue within the normal limits using anti-SERPINB4 mouse monoclonal antibody. (Heat-induced epitope retrieval by 10mM citric buffer, pH6.0, 100°C for 10min, [TA502386])



Immunohistochemical staining of paraffin-embedded Carcinoma of Human pancreas tissue using anti-SERPINB4 mouse monoclonal antibody. (Heat-induced epitope retrieval by 10mM citric buffer, pH6.0, 100°C for 10min, [TA502386])