

Product datasheet for **CF502238**

SQSTM1 Mouse Monoclonal Antibody [Clone ID: OTI5A1]

Product data:

Product Type:	Primary Antibodies
Clone Name:	OTI5A1
Applications:	FC, IF, IHC, WB
Recommended Dilution:	WB 1:2000, IHC 1:150, IF 1:100, FLOW 1:100
Reactivity:	Human, Mouse, Rat
Host:	Mouse
Isotype:	IgG2a
Clonality:	Monoclonal
Immunogen:	Full length human recombinant protein of human SQSTM1 (NP_003891) produced in HEK293T cell.
Formulation:	Lyophilized powder (original buffer 1X PBS, pH 7.3, 8% trehalose)
Reconstitution Method:	For reconstitution, we recommend adding 100uL distilled water to a final antibody concentration of about 1 mg/mL. To use this carrier-free antibody for conjugation experiment, we strongly recommend performing another round of desalting process. (OriGene recommends Zeba Spin Desalting Columns, 7KMWCO from Thermo Scientific)
Purification:	Purified from mouse ascites fluids or tissue culture supernatant by affinity chromatography (protein A/G)
Conjugation:	Unconjugated
Storage:	Store at -20°C as received.
Stability:	Stable for 12 months from date of receipt.
Predicted Protein Size:	47.5 kDa
Gene Name:	sequestosome 1
Database Link:	NP_003891 Entrez Gene 18412 Mouse Entrez Gene 113894 Rat Entrez Gene 8878 Human Q13501



[View online »](#)

Background:

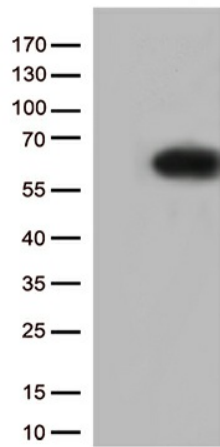
This gene encodes a multifunctional protein that binds ubiquitin and regulates activation of the nuclear factor kappa-B (NF- κ B) signaling pathway. The protein functions as a scaffolding/adaptor protein in concert with TNF receptor-associated factor 6 to mediate activation of NF- κ B in response to upstream signals. Alternatively spliced transcript variants encoding either the same or different isoforms have been identified for this gene. Mutations in this gene result in sporadic and familial Paget disease of bone. [provided by RefSeq]

Synonyms:

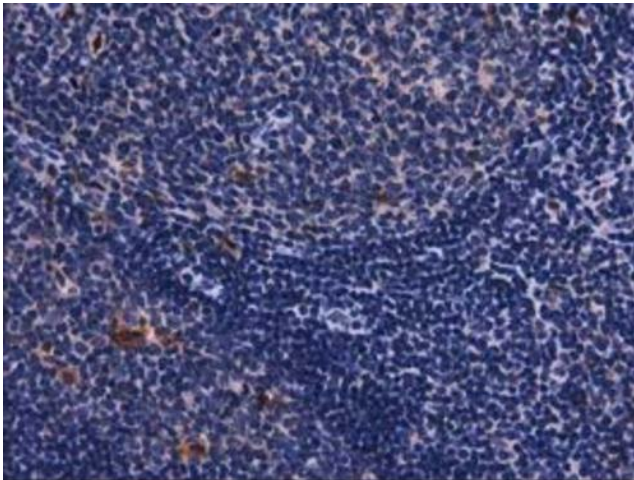
A170; OSIL; p60; p62; p62B; PDB3; ZIP3

Protein Families:

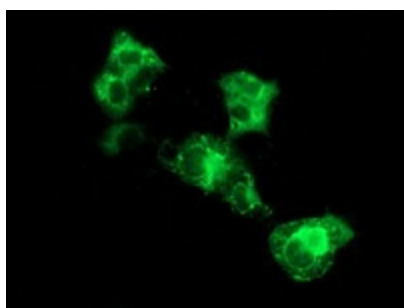
Druggable Genome, Transcription Factors

Product images:

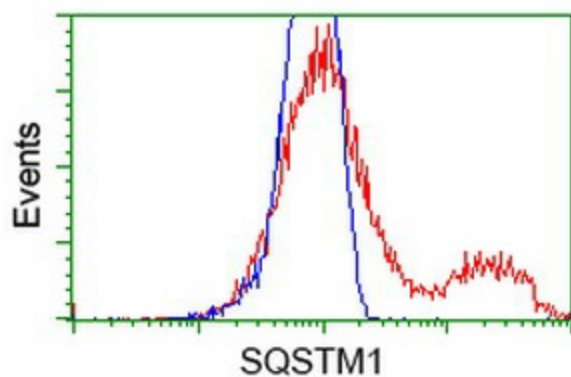
HEK293T cells were transfected with the pCMV6-ENTRY control (Left lane) or pCMV6-ENTRY SQSTM1 ([RC203214], Right lane) cDNA for 48 hrs and lysed. Equivalent amounts of cell lysates (5 ug per lane) were separated by SDS-PAGE and immunoblotted with anti-SQSTM1 (1:500).



Immunohistochemical staining of paraffin-embedded Human prostate tissue within the normal limits using anti-SQSTM1 mouse monoclonal antibody. (Heat-induced epitope retrieval by 10mM citric buffer, pH6.0, 100°C for 10min, [TA502238])



Anti-SQSTM1 mouse monoclonal antibody ([TA502238]) immunofluorescent staining of COS7 cells transiently transfected by pCMV6-ENTRY SQSTM1 ([RC203214]).



HEK293T cells transfected with either [RC203214] overexpress plasmid (Red) or empty vector control plasmid (Blue) were immunostained by anti-SQSTM1 antibody ([TA502238]), and then analyzed by flow cytometry.