

Product datasheet for **CF502082**

HDAC6 Mouse Monoclonal Antibody [Clone ID: OTI5E6]

Product data:

Product Type:	Primary Antibodies
Clone Name:	OTI5E6
Applications:	FC, IF, IHC, WB
Recommended Dilution:	WB 1:500~2000, IHC 1:150, IF 1:100, FLOW 1:100
Reactivity:	Human, Monkey
Host:	Mouse
Isotype:	IgG1
Clonality:	Monoclonal
Immunogen:	Full length human recombinant protein of human HDAC6 (NP_006035) produced in HEK293T cell.
Formulation:	Lyophilized powder (original buffer 1X PBS, pH 7.3, 8% trehalose)
Reconstitution Method:	For reconstitution, we recommend adding 100uL distilled water to a final antibody concentration of about 1 mg/mL. To use this carrier-free antibody for conjugation experiment, we strongly recommend performing another round of desalting process. (OriGene recommends Zeba Spin Desalting Columns, 7KMWCO from Thermo Scientific)
Purification:	Purified from mouse ascites fluids or tissue culture supernatant by affinity chromatography (protein A/G)
Conjugation:	Unconjugated
Storage:	Store at -20°C as received.
Stability:	Stable for 12 months from date of receipt.
Predicted Protein Size:	131.2 kDa
Gene Name:	histone deacetylase 6
Database Link:	NP_006035 Entrez Gene 711363 Monkey Entrez Gene 10013 Human Q9UBN7



[View online »](#)

Background:

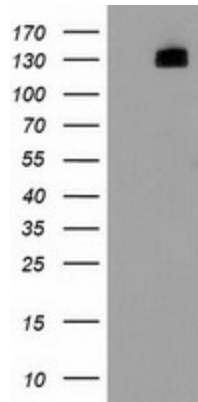
Histones play a critical role in transcriptional regulation, cell cycle progression, and developmental events. Histone acetylation/deacetylation alters chromosome structure and affects transcription factor access to DNA. The protein encoded by this gene belongs to class II of the histone deacetylase/acuc/apha family. It contains an internal duplication of two catalytic domains which appear to function independently of each other. This protein possesses histone deacetylase activity and represses transcription. [provided by RefSeq]

Synonyms:

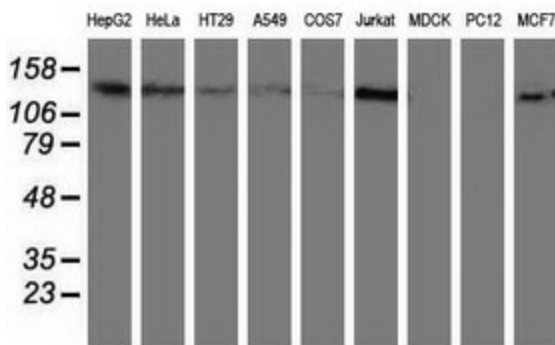
CPBHM; HD6; JM21; PPP1R90

Protein Families:

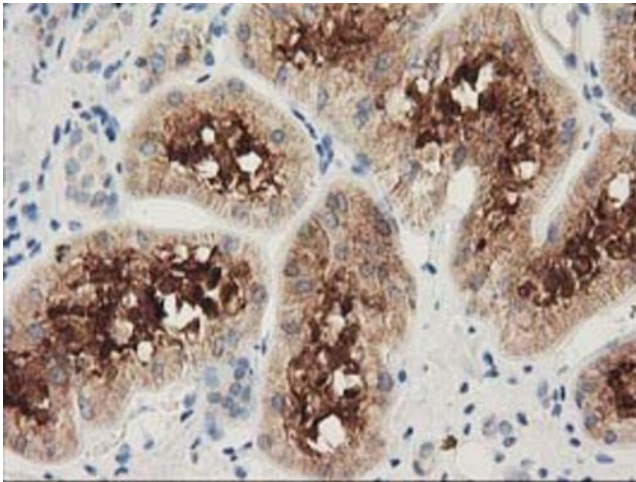
Druggable Genome, Transcription Factors

Product images:


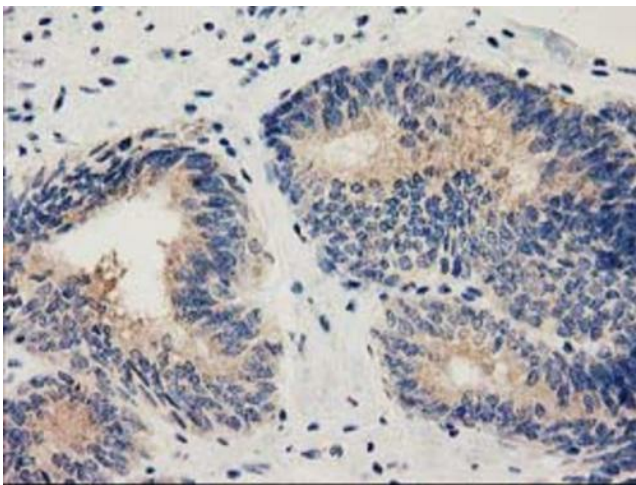
HEK293T cells were transfected with the pCMV6-ENTRY control (Left lane) or pCMV6-ENTRY HDAC6 ([RC209649], Right lane) cDNA for 48 hrs and lysed. Equivalent amounts of cell lysates (5 ug per lane) were separated by SDS-PAGE and immunoblotted with anti-HDAC6. Positive lysates [LY401822] (100ug) and [LC401822] (20ug) can be purchased separately from OriGene.



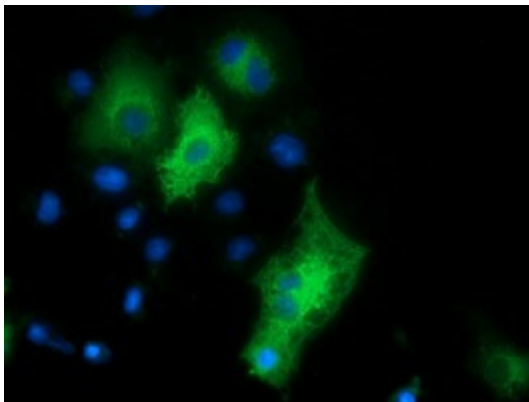
Western blot analysis of extracts (35ug) from 9 different cell lines by using anti-HDAC6 monoclonal antibody.



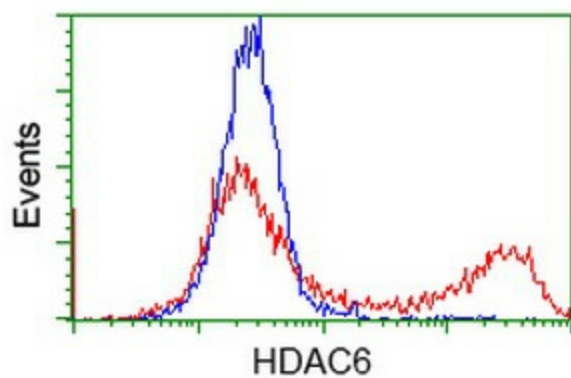
Immunohistochemical staining of paraffin-embedded Human Kidney tissue within the normal limits using anti-HDAC6 mouse monoclonal antibody. (Heat-induced epitope retrieval by 10mM citric buffer, pH6.0, 100°C for 10min, [TA502082])



Immunohistochemical staining of paraffin-embedded Adenocarcinoma of Human endometrium tissue using anti-HDAC6 mouse monoclonal antibody. (Heat-induced epitope retrieval by 10mM citric buffer, pH6.0, 100°C for 10min, [TA502082])



Anti-HDAC6 mouse monoclonal antibody ([TA502082]) immunofluorescent staining of COS7 cells transiently transfected by pCMV6-ENTRY HDAC6 ([RC209649]).



HEK293T cells transfected with either [RC209649] overexpress plasmid (Red) or empty vector control plasmid (Blue) were immunostained by anti-HDAC6 antibody ([TA502082]), and then analyzed by flow cytometry.