

Product datasheet for **CF501953**

SAMHD1 Mouse Monoclonal Antibody [Clone ID: OTI1F6]

Product data:

| | |
|--------------------------------|--|
| Product Type: | Primary Antibodies |
| Clone Name: | OTI1F6 |
| Applications: | FC, IF, WB |
| Recommended Dilution: | WB 1:500~2000, IF 1:100, FLOW 1:100 |
| Reactivity: | Human, Monkey |
| Host: | Mouse |
| Isotype: | IgG1 |
| Clonality: | Monoclonal |
| Immunogen: | Full length human recombinant protein of human SAMHD1 (NP_056289) produced in HEK293T cell. |
| Formulation: | Lyophilized powder (original buffer 1X PBS, pH 7.3, 8% trehalose) |
| Reconstitution Method: | For reconstitution, we recommend adding 100uL distilled water to a final antibody concentration of about 1 mg/mL. To use this carrier-free antibody for conjugation experiment, we strongly recommend performing another round of desalting process. (OriGene recommends Zeba Spin Desalting Columns, 7KMWCO from Thermo Scientific) |
| Purification: | Purified from mouse ascites fluids or tissue culture supernatant by affinity chromatography (protein A/G) |
| Conjugation: | Unconjugated |
| Storage: | Store at -20°C as received. |
| Stability: | Stable for 12 months from date of receipt. |
| Predicted Protein Size: | 72.0 kDa |
| Gene Name: | SAM and HD domain containing deoxynucleoside triphosphate triphosphohydrolase 1 |
| Database Link: | NP_056289 Entrez Gene 709060 Monkey Entrez Gene 25939 Human Q9Y3Z3 |



[View online »](#)

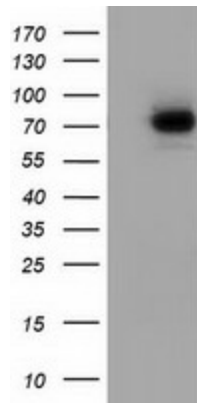
Background:

This gene may play a role in regulation of the innate immune response. The encoded protein is upregulated in response to viral infection and may be involved in mediation of tumor necrosis factor-alpha proinflammatory responses. Mutations in this gene have been associated with Aicardi-Goutieres syndrome. [provided by RefSeq]. COMPLETENESS: complete on the 3' end.

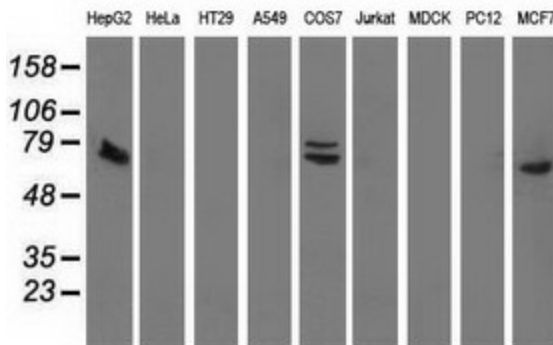
Synonyms:

CHBL2; DCIP; HDDC1; MOP-5; SBBI88

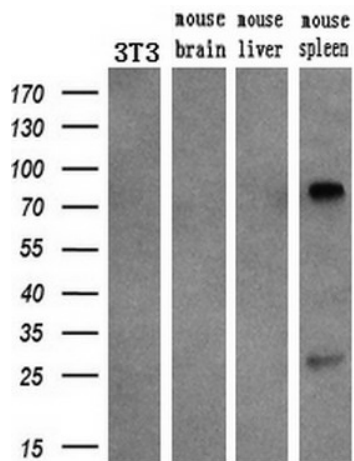
Product images:



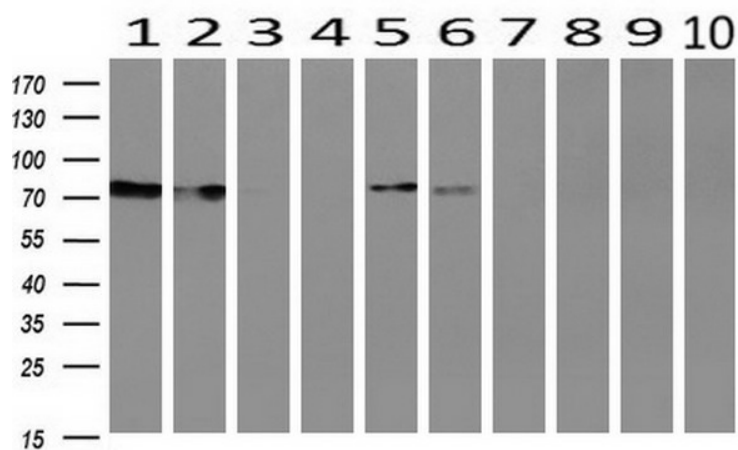
HEK293T cells were transfected with the pCMV6-ENTRY control (Left lane) or pCMV6-ENTRY SAMHD1 ([RC206013], Right lane) cDNA for 48 hrs and lysed. Equivalent amounts of cell lysates (5 ug per lane) were separated by SDS-PAGE and immunoblotted with anti-SAMHD1. Positive lysates [LY414526] (100ug) and [LC414526] (20ug) can be purchased separately from OriGene.



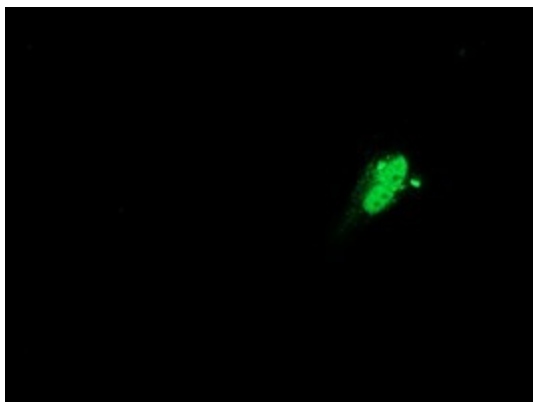
Western blot analysis of extracts (35ug) from 9 different cell lines by using anti-SAMHD1 monoclonal antibody.



Western blot analysis of extracts (10ug) from a mouse cell line and 3 different mouse tissues by using anti-SAMHD1 monoclonal antibody (1:200).



Western blot analysis of extracts (10ug) from 10 Human tissue by using anti-SAMHD1 monoclonal antibody at 1:200 (1: Testis; 2: Omentum; 3: Uterus; 4: Breast; 5: Brain; 6: Liver; 7: Ovary; 8: Thyroid gland; 9: colon; 10: spleen).



Anti-SAMHD1 mouse monoclonal antibody ([TA501953]) immunofluorescent staining of COS7 cells transiently transfected by pCMV6-ENTRY SAMHD1 ([RC206013]).

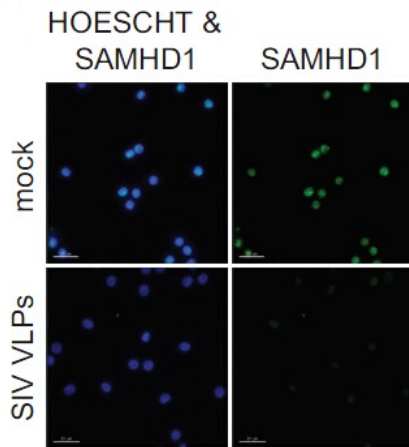
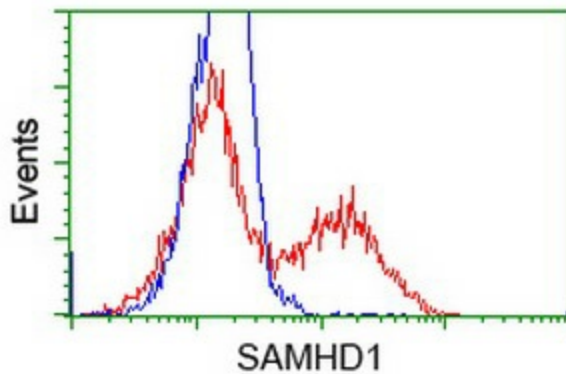
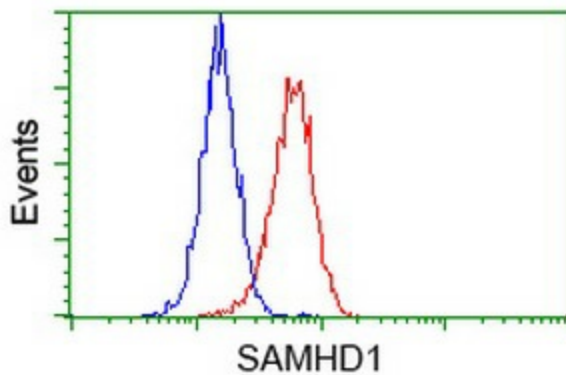


Figure from citation: Immunofluorescence of SAMHD1 protein level by using anti-SAMHD1 antibody in human CD4+ T cells. [View Citation](#)



HEK293T cells transfected with either [RC206013] overexpress plasmid (Red) or empty vector control plasmid (Blue) were immunostained by anti-SAMHD1 antibody ([TA501953]), and then analyzed by flow cytometry.



Flow cytometric Analysis of HeLa cells, using anti-SAMHD1 antibody ([TA501953]), (Red), compared to a nonspecific negative control antibody (TA50011), (Blue).