

## Product datasheet for **CF501757**

### RIT2 Mouse Monoclonal Antibody [Clone ID: OTI3F4]

#### Product data:

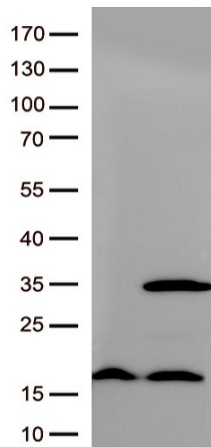
Product Type:	Primary Antibodies
Clone Name:	OTI3F4
Applications:	FC, IHC, WB
Recommended Dilution:	WB 1:500, IHC 1:150, FLOW 1:100
Reactivity:	Human, Dog, Rat, Monkey, Mouse
Host:	Mouse
Isotype:	IgG2a
Clonality:	Monoclonal
Immunogen:	Full length human recombinant protein of human RIT2 (NP_002921) produced in HEK293T cell.
Formulation:	Lyophilized powder (original buffer 1X PBS, pH 7.3, 8% trehalose)
Reconstitution Method:	For reconstitution, we recommend adding 100uL distilled water to a final antibody concentration of about 1 mg/mL. To use this carrier-free antibody for conjugation experiment, we strongly recommend performing another round of desalting process. (OriGene recommends Zeba Spin Desalting Columns, 7KMWCO from Thermo Scientific)
Purification:	Purified from mouse ascites fluids or tissue culture supernatant by affinity chromatography (protein A/G)
Conjugation:	Unconjugated
Storage:	Store at -20°C as received.
Stability:	Stable for 12 months from date of receipt.
Predicted Protein Size:	24.5 kDa
Gene Name:	Ras like without CAAX 2
Database Link:	<a href="#">NP_002921</a> <a href="#">Entrez Gene 19762 Mouse</a> <a href="#">Entrez Gene 291713 Rat</a> <a href="#">Entrez Gene 490475 Dog</a> <a href="#">Entrez Gene 694050 Monkey</a> <a href="#">Entrez Gene 6014 Human</a> <a href="#">Q99578</a>
Background:	RIN belongs to the RAS (HRAS; MIM 190020) superfamily of small GTPases (Shao et al., 1999 [PubMed 10545207]). [supplied by OMIM]



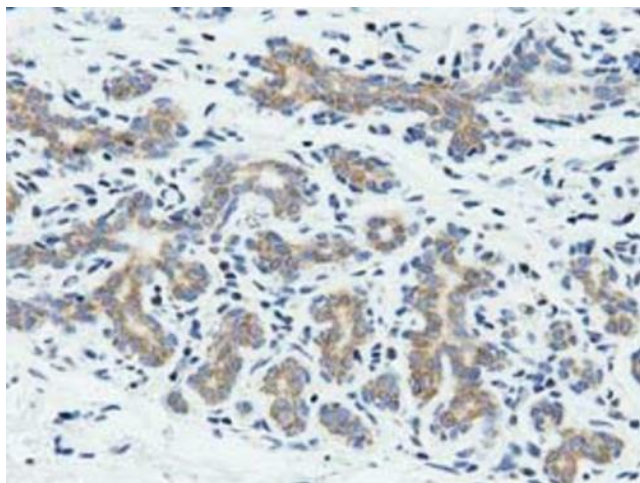
[View online >](#)

Synonyms: RIBA; RIN; ROC2

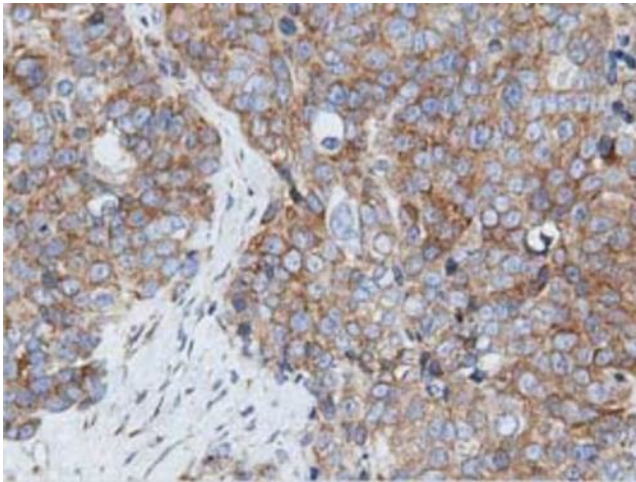
### Product images:



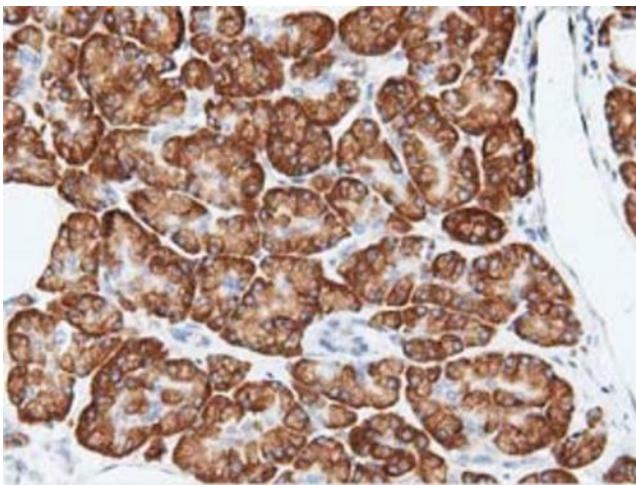
HEK293T cells were transfected with the pCMV6-ENTRY control (Left lane) or pCMV6-ENTRY RIT2 ([RC205367], Right lane) cDNA for 48 hrs and lysed. Equivalent amounts of cell lysates (5 ug per lane) were separated by SDS-PAGE and immunoblotted with anti-RIT2.(1:500) This antibody recognizes a nonspecific band around 20KD



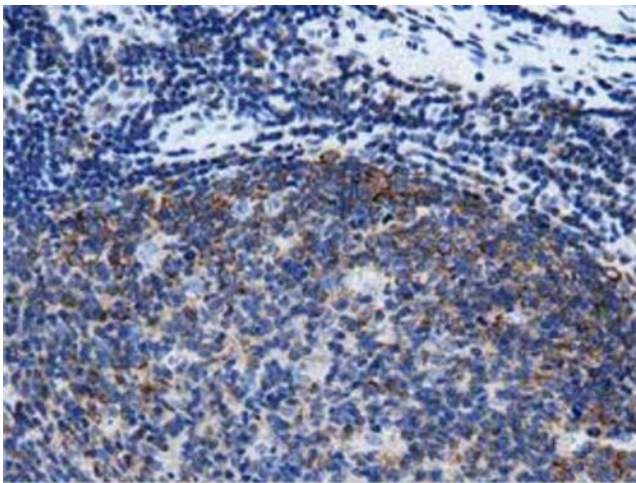
Immunohistochemical staining of paraffin-embedded Human breast tissue within the normal limits using anti-RIT2 mouse monoclonal antibody. (Heat-induced epitope retrieval by 10mM citric buffer, pH6.0, 100°C for 10min, [TA501757], Dilution 1:50)



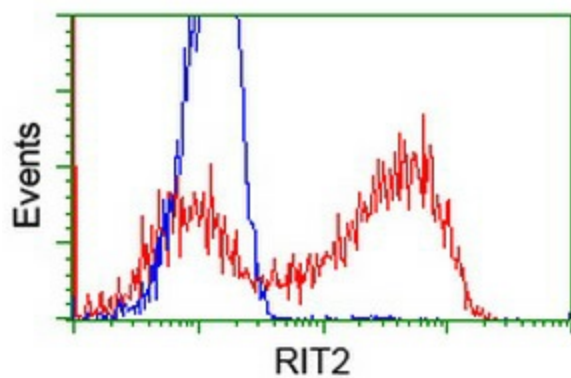
Immunohistochemical staining of paraffin-embedded Adenocarcinoma of Human ovary tissue using anti-RIT2 mouse monoclonal antibody. (Heat-induced epitope retrieval by 10mM citric buffer, pH6.0, 100°C for 10min, [TA501757], Dilution 1:50)



Immunohistochemical staining of paraffin-embedded Human pancreas tissue within the normal limits using anti-RIT2 mouse monoclonal antibody. (Heat-induced epitope retrieval by 10mM citric buffer, pH6.0, 100°C for 10min, [TA501757], Dilution 1:50)



Immunohistochemical staining of paraffin-embedded Human lymph node tissue within the normal limits using anti-RIT2 mouse monoclonal antibody. (Heat-induced epitope retrieval by 10mM citric buffer, pH6.0, 100°C for 10min, [TA501757], Dilution 1:50)



HEK293T cells transfected with either [RC205367] overexpress plasmid (Red) or empty vector control plasmid (Blue) were immunostained by anti-RIT2 antibody ([TA501757]), and then analyzed by flow cytometry.