

Product datasheet for **CF501680**

B7-1 (CD80) Mouse Monoclonal Antibody [Clone ID: OTI7H7]

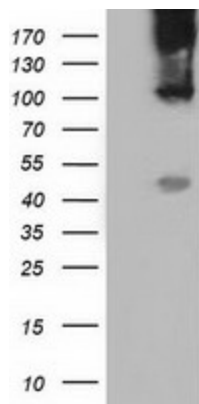
Product data:

| | |
|--------------------------------|--|
| Product Type: | Primary Antibodies |
| Clone Name: | OTI7H7 |
| Applications: | IF, WB |
| Recommended Dilution: | WB 1:2000, IF 1:100 |
| Reactivity: | Human |
| Host: | Mouse |
| Isotype: | IgG1 |
| Clonality: | Monoclonal |
| Immunogen: | Full length human recombinant protein of human CD80 (NP_005182) produced in HEK293T cell. |
| Formulation: | Lyophilized powder (original buffer 1X PBS, pH 7.3, 8% trehalose) |
| Reconstitution Method: | For reconstitution, we recommend adding 100uL distilled water to a final antibody concentration of about 1 mg/mL. To use this carrier-free antibody for conjugation experiment, we strongly recommend performing another round of desalting process. (OriGene recommends Zeba Spin Desalting Columns, 7KMWCO from Thermo Scientific) |
| Purification: | Purified from mouse ascites fluids or tissue culture supernatant by affinity chromatography (protein A/G) |
| Conjugation: | Unconjugated |
| Storage: | Store at -20°C as received. |
| Stability: | Stable for 12 months from date of receipt. |
| Predicted Protein Size: | 29.3 kDa |
| Gene Name: | CD80 molecule |
| Database Link: | NP_005182 Entrez Gene 941 Human P33681 |
| Background: | The B-lymphocyte activation antigen B7-1 (formerly referred to as B7) provides regulatory signals for T lymphocytes as a consequence of binding to the CD28 (MIM 186760) and CTLA4 (MIM 123890) ligands of T cells. [supplied by OMIM] |

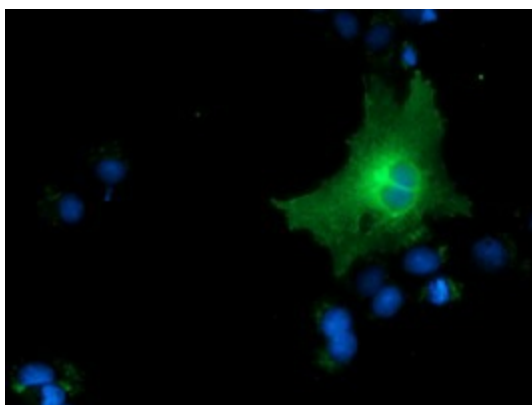


[View online »](#)

| | |
|--------------------------|---|
| Synonyms: | B7; B7-1; B7.1; BB1; CD28LG; CD28LG1; LAB7 |
| Protein Families: | Druggable Genome, Transcription Factors, Transmembrane |
| Protein Pathways: | Allograft rejection, Autoimmune thyroid disease, Cell adhesion molecules (CAMs), Graft-versus-host disease, Systemic lupus erythematosus, Toll-like receptor signaling pathway, Type I diabetes mellitus, Viral myocarditis |

Product images:

HEK293T cells were transfected with the pCMV6-ENTRY control (Left lane) or pCMV6-ENTRY CD80 ([RC206540], Right lane) cDNA for 48 hrs and lysed. Equivalent amounts of cell lysates (5 ug per lane) were separated by SDS-PAGE and immunoblotted with anti-CD80.



Anti-CD80 mouse monoclonal antibody ([TA501680]) immunofluorescent staining of COS7 cells transiently transfected by pCMV6-ENTRY CD80 ([RC206540]).