

## Product datasheet for **CF501200**

### **PDE4A Mouse Monoclonal Antibody [Clone ID: OTI2G2]**

#### **Product data:**

<b>Product Type:</b>	Primary Antibodies
<b>Clone Name:</b>	OTI2G2
<b>Applications:</b>	FC, IF, IHC, WB
<b>Recommended Dilution:</b>	WB 1:2000, IHC 1:50, IF 1:100, FLOW 1:100
<b>Reactivity:</b>	Human, Rat
<b>Host:</b>	Mouse
<b>Isotype:</b>	IgG1
<b>Clonality:</b>	Monoclonal
<b>Immunogen:</b>	Full length human recombinant protein of human PDE4A (NP_006193) produced in HEK293T cell.
<b>Formulation:</b>	Lyophilized powder (original buffer 1X PBS, pH 7.3, 8% trehalose)
<b>Reconstitution Method:</b>	For reconstitution, we recommend adding 100uL distilled water to a final antibody concentration of about 1 mg/mL. To use this carrier-free antibody for conjugation experiment, we strongly recommend performing another round of desalting process. (OriGene recommends Zeba Spin Desalting Columns, 7KMWCO from Thermo Scientific)
<b>Purification:</b>	Purified from mouse ascites fluids or tissue culture supernatant by affinity chromatography (protein A/G)
<b>Conjugation:</b>	Unconjugated
<b>Storage:</b>	Store at -20°C as received.
<b>Stability:</b>	Stable for 12 months from date of receipt.
<b>Predicted Protein Size:</b>	72.0 kDa
<b>Gene Name:</b>	phosphodiesterase 4A
<b>Database Link:</b>	<a href="#">NP_006193</a> <a href="#">Entrez Gene 5141 Human</a> <a href="#">P27815</a>



[View online »](#)

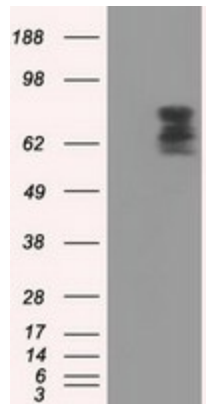
**Background:** Cyclic nucleotides are important second messengers that regulate and mediate a number of cellular responses to extracellular signals, such as hormones, light, and neurotransmitters. Cyclic nucleotide phosphodiesterases (PDEs) regulate the cellular concentrations of cyclic nucleotides and thereby play a role in signal transduction. PDE4A is a class IV cAMP-specific PDE

**Synonyms:** DPDE2; PDE4; PDE46

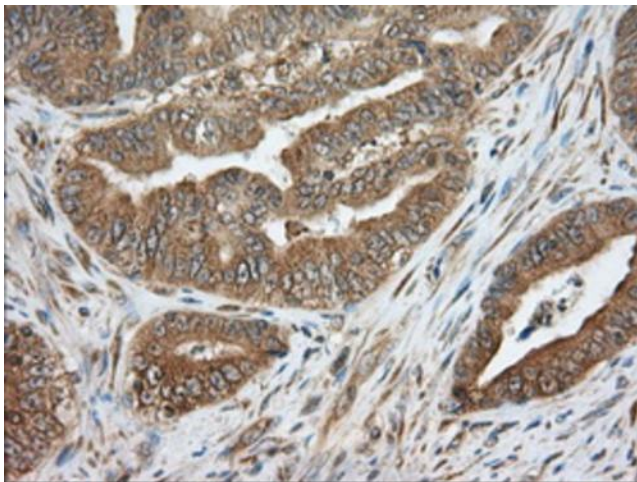
**Protein Families:** Druggable Genome

**Protein Pathways:** Progesterone-mediated oocyte maturation, Purine metabolism

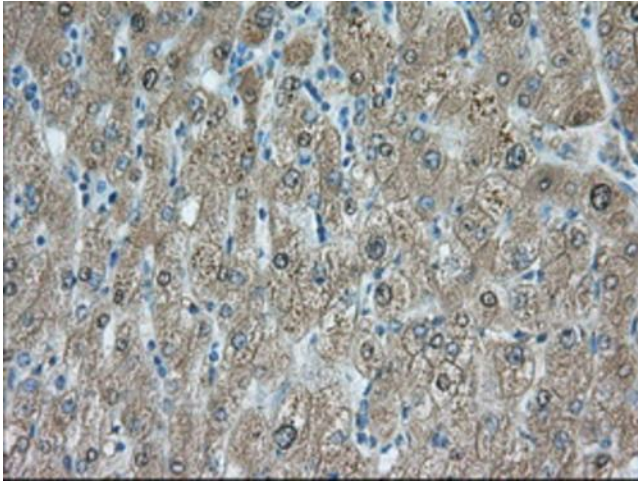
### Product images:



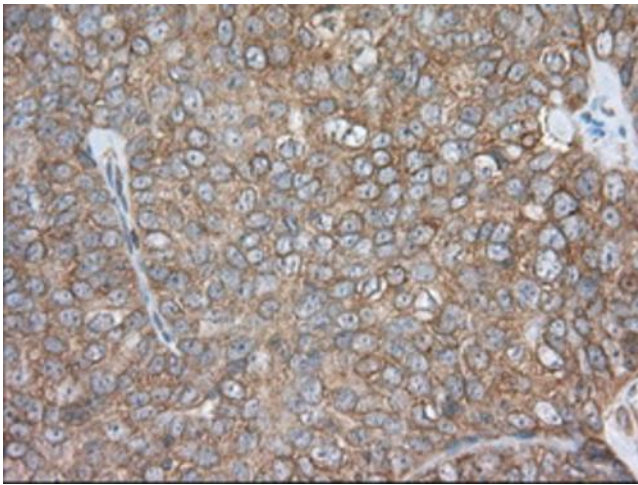
HEK293T cells were transfected with the pCMV6-ENTRY control (Left lane) or pCMV6-ENTRY PDE4A ([RC207765], Right lane) cDNA for 48 hrs and lysed. Equivalent amounts of cell lysates (5 ug per lane) were separated by SDS-PAGE and immunoblotted with anti-PDE4A.



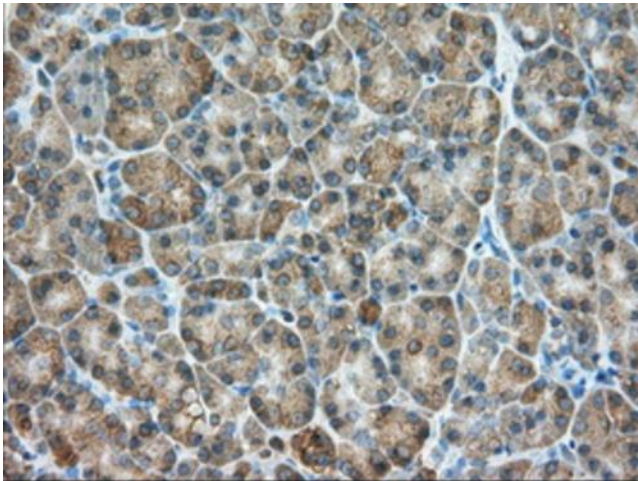
Immunohistochemical staining of paraffin-embedded Adenocarcinoma of Human colon tissue using anti-PDE4A mouse monoclonal antibody. (Heat-induced epitope retrieval by 10mM citric buffer, pH6.0, 100°C for 10min, [TA501200], Dilution 1:50)



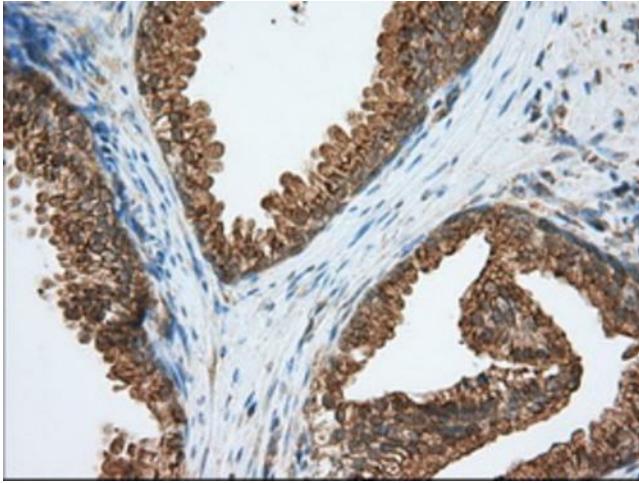
Immunohistochemical staining of paraffin-embedded Human liver tissue within the normal limits using anti-PDE4A mouse monoclonal antibody. (Heat-induced epitope retrieval by 10mM citric buffer, pH6.0, 100°C for 10min, [TA501200], Dilution 1:50)



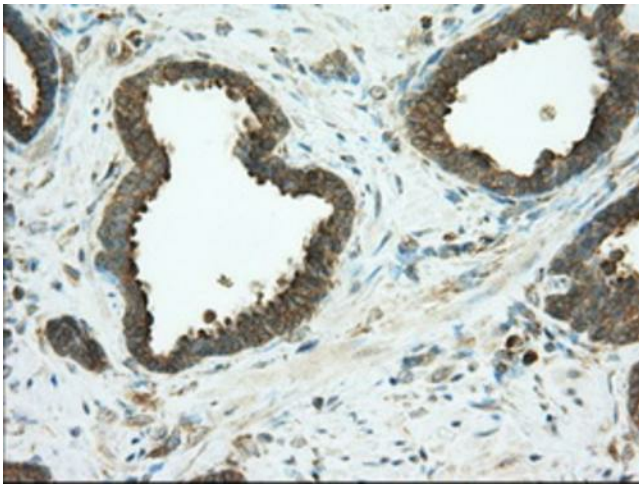
Immunohistochemical staining of paraffin-embedded Adenocarcinoma of Human ovary tissue using anti-PDE4A mouse monoclonal antibody. (Heat-induced epitope retrieval by 10mM citric buffer, pH6.0, 100°C for 10min, [TA501200], Dilution 1:50)



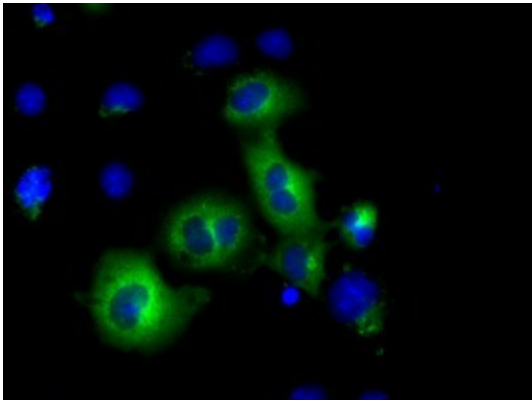
Immunohistochemical staining of paraffin-embedded Human pancreas tissue within the normal limits using anti-PDE4A mouse monoclonal antibody. (Heat-induced epitope retrieval by 10mM citric buffer, pH6.0, 100°C for 10min, [TA501200], Dilution 1:50)



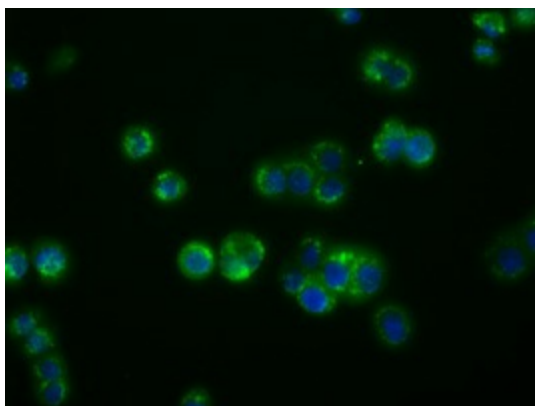
Immunohistochemical staining of paraffin-embedded Human prostate tissue within the normal limits using anti-PDE4A mouse monoclonal antibody. (Heat-induced epitope retrieval by 10mM citric buffer, pH6.0, 100°C for 10min, [TA501200], Dilution 1:50)



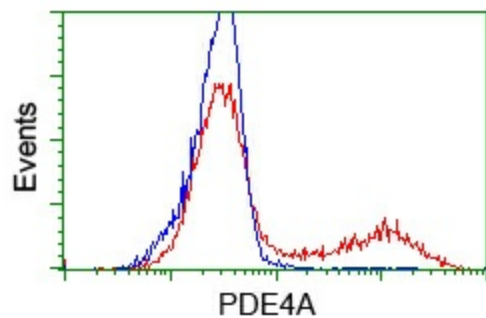
Immunohistochemical staining of paraffin-embedded Carcinoma of Human prostate tissue using anti-PDE4A mouse monoclonal antibody. (Heat-induced epitope retrieval by 10mM citric buffer, pH6.0, 100°C for 10min, [TA501200], Dilution 1:50)



Anti-PDE4A mouse monoclonal antibody ([TA501200]) immunofluorescent staining of COS7 cells transiently transfected by pCMV6-ENTRY PDE4A ([RC207765]).



Immunofluorescent staining of HT29 cells using anti-PDE4A mouse monoclonal antibody (TA501200).



HEK293T cells transfected with either [RC207765] overexpress plasmid (Red) or empty vector control plasmid (Blue) were immunostained by anti-PDE4A antibody (TA501200), and then analyzed by flow cytometry.