

Product datasheet for **CF500594**

PP5 (PPP5C) Mouse Monoclonal Antibody [Clone ID: OTI1G2]

Product data:

Product Type:	Primary Antibodies
Clone Name:	OTI1G2
Applications:	FC, IF, IHC, WB
Recommended Dilution:	WB 1:2000, IHC 1:50, IF 1:100, FLOW 1:100
Reactivity:	Human, Mouse, Rat
Host:	Mouse
Isotype:	IgG2a
Clonality:	Monoclonal
Immunogen:	Full length human recombinant protein of human PPP5C (NP_006238) produced in HEK293T cell.
Formulation:	Lyophilized powder (original buffer 1X PBS, pH 7.3, 8% trehalose)
Reconstitution Method:	For reconstitution, we recommend adding 100uL distilled water to a final antibody concentration of about 1 mg/mL. To use this carrier-free antibody for conjugation experiment, we strongly recommend performing another round of desalting process. (OriGene recommends Zeba Spin Desalting Columns, 7KMWCO from Thermo Scientific)
Purification:	Purified from mouse ascites fluids or tissue culture supernatant by affinity chromatography (protein A/G)
Conjugation:	Unconjugated
Storage:	Store at -20°C as received.
Stability:	Stable for 12 months from date of receipt.
Predicted Protein Size:	56.7 kDa
Gene Name:	protein phosphatase 5 catalytic subunit
Database Link:	NP_006238 Entrez Gene 65179 Rat Entrez Gene 5536 Human P53041



[View online »](#)

Background:

This gene encodes a serine/threonine phosphatase which is a member of the protein phosphatase catalytic subunit family. Proteins in this family participate in pathways regulated by reversible phosphorylation at serine and threonine residues; many of these pathways are involved in the regulation of cell growth and differentiation. The product of this gene has been shown to participate in signaling pathways in response to hormones or cellular stress, and elevated levels of this protein may be associated with breast cancer development. Alternative splicing results in multiple transcript variants. [provided by RefSeq]

Synonyms:

PP5; PPP5; PPT

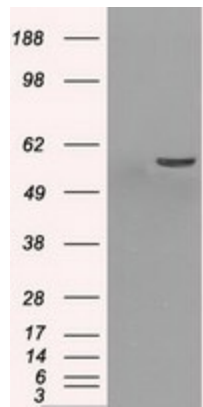
Protein Families:

Druggable Genome, Transcription Factors

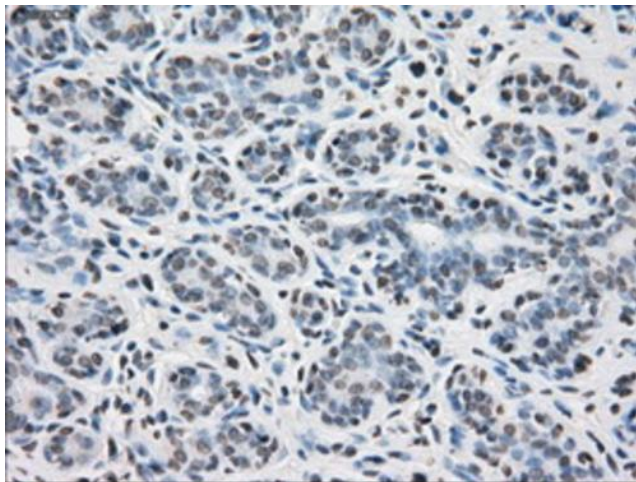
Protein Pathways:

MAPK signaling pathway

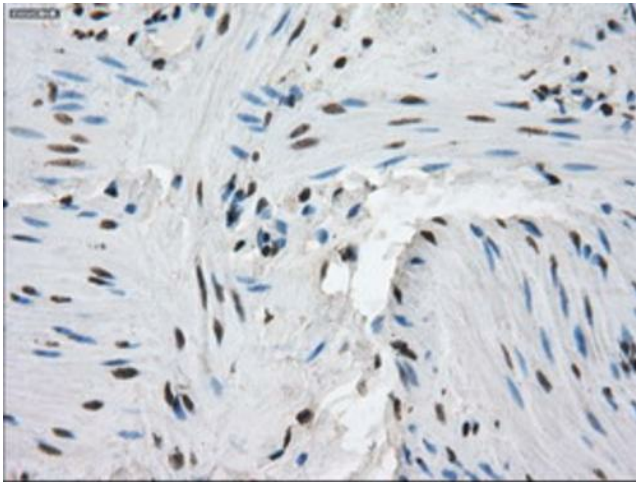
Product images:



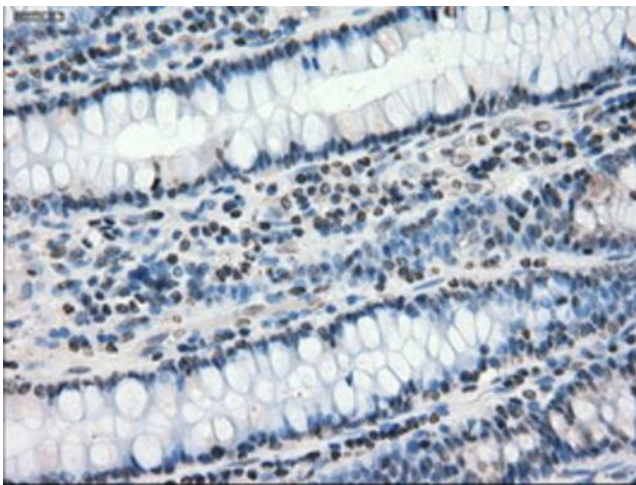
HEK293T cells were transfected with the pCMV6-ENTRY control (Left lane) or pCMV6-ENTRY PPP5C [RC201650], Right lane) cDNA for 48 hrs and lysed. Equivalent amounts of cell lysates (5 ug per lane) were separated by SDS-PAGE and immunoblotted with anti-PPP5C. Positive lysates [LY416767] (100ug) and [LC416767] (20ug) can be purchased separately from OriGene.



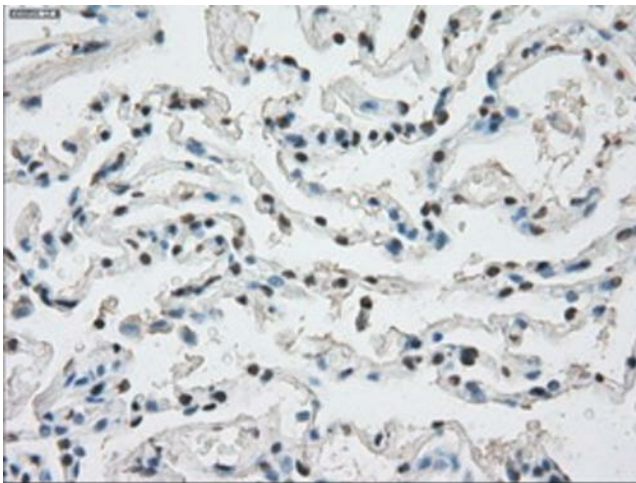
Immunohistochemical staining of paraffin-embedded Human breast tissue within the normal limits using anti-PPP5C mouse monoclonal antibody. (Heat-induced epitope retrieval by 10mM citric buffer, pH6.0, 100°C for 10min, [TA500594])



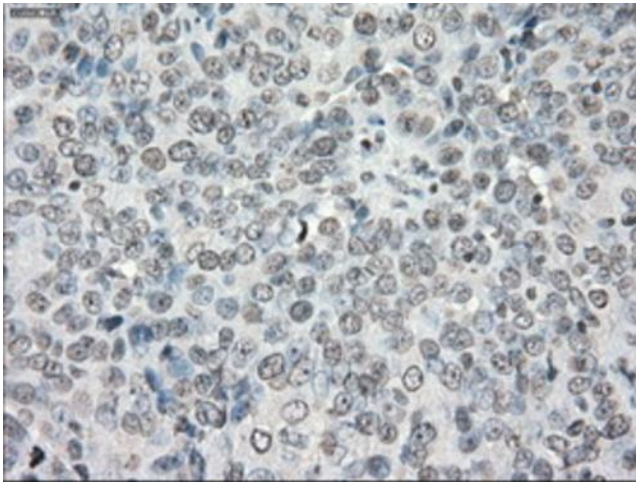
Immunohistochemical staining of paraffin-embedded Human colon tissue within the normal limits using anti-PPP5C mouse monoclonal antibody. (Heat-induced epitope retrieval by 10mM citric buffer, pH6.0, 100°C for 10min, [TA500594])



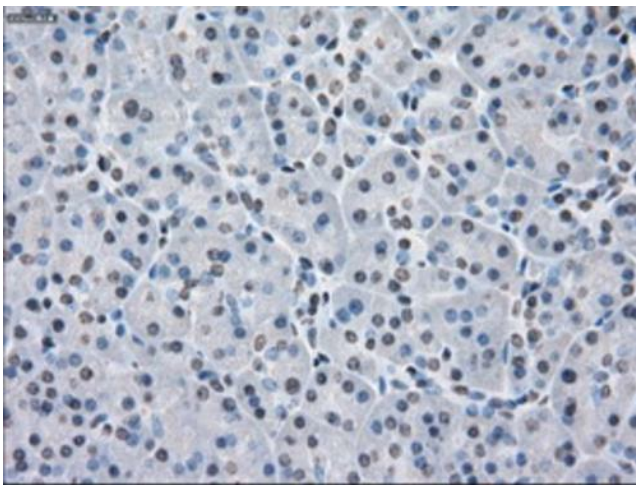
Immunohistochemical staining of paraffin-embedded Adenocarcinoma of Human colon tissue using anti-PPP5C mouse monoclonal antibody. (Heat-induced epitope retrieval by 10mM citric buffer, pH6.0, 100°C for 10min, [TA500594])



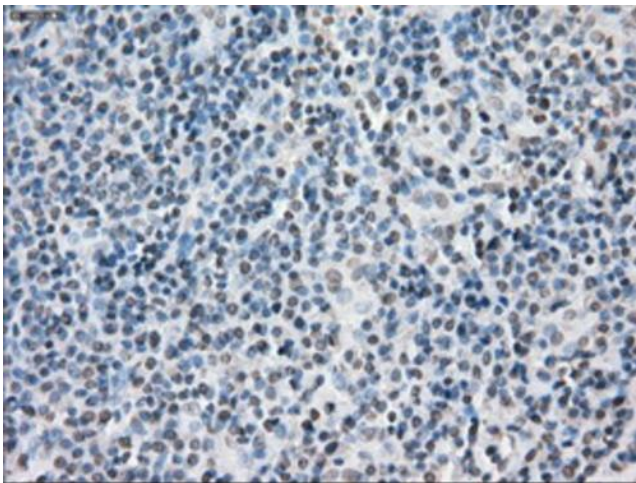
Immunohistochemical staining of paraffin-embedded Human lung tissue within the normal limits using anti-PPP5C mouse monoclonal antibody. (Heat-induced epitope retrieval by 10mM citric buffer, pH6.0, 100°C for 10min, [TA500594])



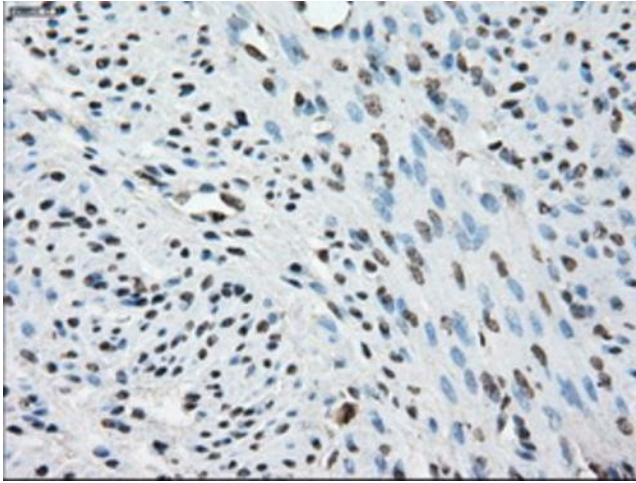
Immunohistochemical staining of paraffin-embedded Adenocarcinoma of Human ovary tissue using anti-PPP5C mouse monoclonal antibody. (Heat-induced epitope retrieval by 10mM citric buffer, pH6.0, 100°C for 10min, [TA500594])



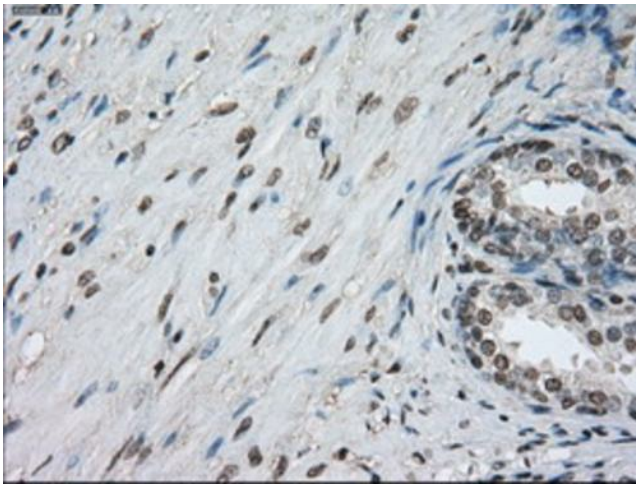
Immunohistochemical staining of paraffin-embedded Human pancreas tissue within the normal limits using anti-PPP5C mouse monoclonal antibody. (Heat-induced epitope retrieval by 10mM citric buffer, pH6.0, 100°C for 10min, [TA500594])



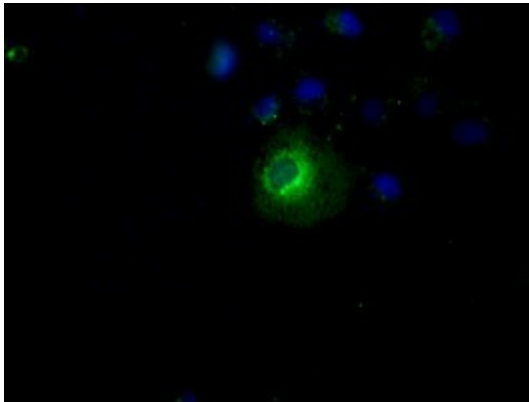
Immunohistochemical staining of paraffin-embedded Carcinoma of Human thyroid tissue using anti-PPP5C mouse monoclonal antibody. (Heat-induced epitope retrieval by 10mM citric buffer, pH6.0, 100°C for 10min, [TA500594])



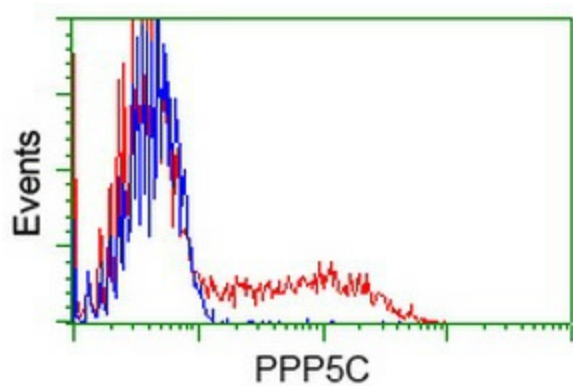
Immunohistochemical staining of paraffin-embedded Human endometrium tissue within the normal limits using anti-PPP5C mouse monoclonal antibody. (Heat-induced epitope retrieval by 10mM citric buffer, pH6.0, 100°C for 10min, [TA500594])



Immunohistochemical staining of paraffin-embedded Human prostate tissue within the normal limits using anti-PPP5C mouse monoclonal antibody. (Heat-induced epitope retrieval by 10mM citric buffer, pH6.0, 100°C for 10min, [TA500594])



Anti-PPP5C mouse monoclonal antibody ([TA500594]) immunofluorescent staining of COS7 cells transiently transfected by pCMV6-ENTRY PPP5C ([RC201650]).



HEK293T cells transfected with either [RC201650] overexpress plasmid (Red) or empty vector control plasmid (Blue) were immunostained by anti-PPP5C antibody ([TA500594]), and then analyzed by flow cytometry.