

## Product datasheet for CF500561

### Protein kinase Y linked (PRKY) Mouse Monoclonal Antibody [Clone ID: OTI2E9]

#### Product data:

Product Type:	Primary Antibodies
Clone Name:	OTI2E9
Applications:	IF, IHC, WB
Recommended Dilution:	WB 1:1000 IHC 1:50 IF 1:100
Reactivity:	Human
Host:	Mouse
Isotype:	IgG1
Clonality:	Monoclonal
Immunogen:	Full-length protein expressed in 293T cell transfected with human PRKY expression vector
Formulation:	Lyophilized powder (original buffer 1X PBS, pH 7.3, 8% trehalose)
Reconstitution Method:	For reconstitution, we recommend adding 100uL distilled water to a final antibody concentration of about 1 mg/mL. To use this carrier-free antibody for conjugation experiment, we strongly recommend performing another round of desalting process. (OriGene recommends Zeba Spin Desalting Columns, 7KMWCO from Thermo Scientific)
Purification:	Purified from mouse ascites fluids or tissue culture supernatant by affinity chromatography (protein A/G)
Conjugation:	Unconjugated
Storage:	Store at -20°C as received.
Stability:	Stable for 12 months from date of receipt.
Predicted Protein Size:	31.7 kDa
Gene Name:	protein kinase Y-linked (pseudogene)
Database Link:	<a href="#">NP_002751</a> <a href="#">Entrez Gene 5616 Human</a> <a href="#">O43930</a>

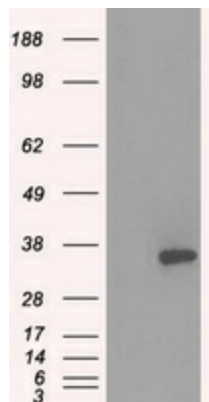
[View online »](#)

**Background:** This gene is similar to the protein kinase, X-linked gene in the pseudoautosomal region of the X chromosome. The gene is classified as a transcribed pseudogene because it has lost a coding exon that results in all transcripts being candidates for nonsense-mediated decay (NMD) and unlikely to express a protein. Abnormal recombination between this gene and a related gene on chromosome X is a frequent cause of XX males and XY females.

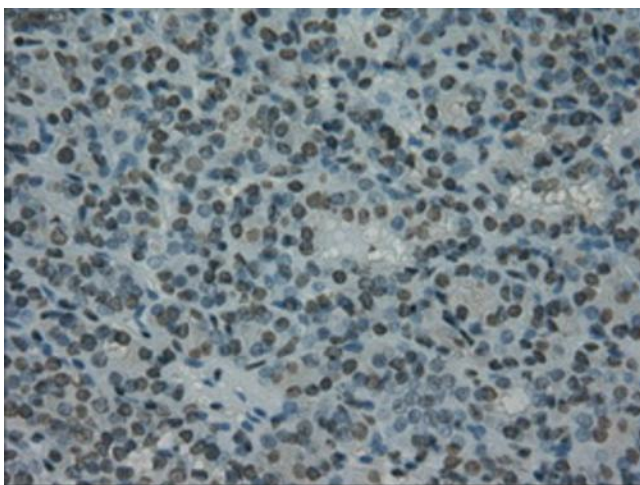
**Synonyms:** OTTHUMP00000033227; protein kinase, Y-linked

**Protein Families:** Druggable Genome, Protein Kinase

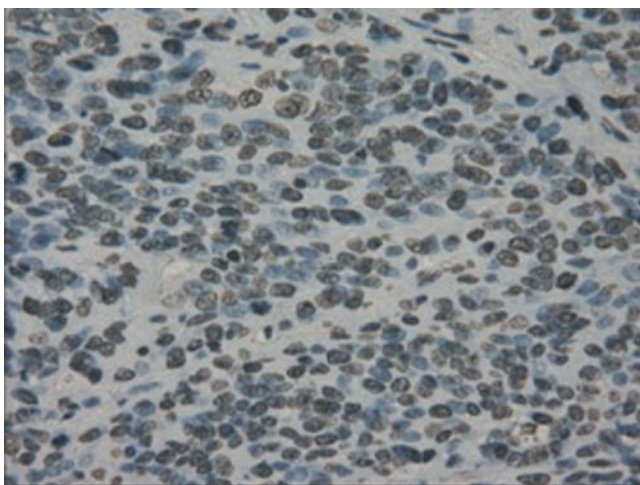
### Product images:



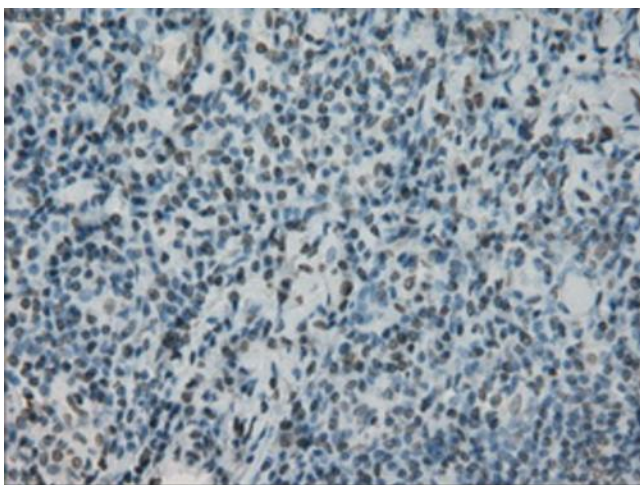
HEK293T cells were transfected with the pCMV6-ENTRY control (Left lane) or pCMV6-ENTRY PRKY ([RC210438], Right lane) cDNA for 48 hrs and lysed. Equivalent amounts of cell lysates (5 ug per lane) were separated by SDS-PAGE and immunoblotted with anti-PRKY. Positive lysates [LY400977] (100ug) and [LC400977] (20ug) can be purchased separately from OriGene.



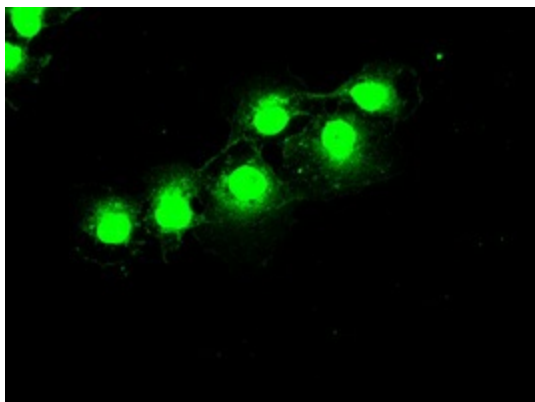
Immunohistochemical staining of paraffin-embedded Carcinoma of thyroid tissue using anti-PRKY mouse monoclonal antibody. Heat-induced epitope retrieval by EDTA solution buffer pH 8.0 at 120°C for 3 min.



Immunohistochemical staining of paraffin-embedded Carcinoma of bladder tissue using anti-PRKY mouse monoclonal antibody. Heat-induced epitope retrieval by EDTA solution buffer pH 8.0 at 120°C for 3 min.



Immunohistochemical staining of paraffin-embedded lymphoma tissue using anti-PRKY mouse monoclonal antibody. Heat-induced epitope retrieval by EDTA solution buffer pH 8.0 at 120°C for 3 min.



Anti-PRKY mouse monoclonal antibody ([TA500561]) immunofluorescent staining of COS7 cells transiently transfected by pCMV6-ENTRY PRKY ([RC210438]).