

Product datasheet for **CF500519**

NY-ESO-1 (CTAG1B) Mouse Monoclonal Antibody [Clone ID: OTI3C9]

Product data:

Product Type:	Primary Antibodies
Clone Name:	OTI3C9
Applications:	FC, IF, IHC, WB
Recommended Dilution:	WB 1:2000, IHC 1:50, IF 1:50
Reactivity:	Human
Host:	Mouse
Isotype:	IgG1
Clonality:	Monoclonal
Immunogen:	Full length human recombinant protein of human CTAG1B (NP_001318) produced in HEK293T cell.
Formulation:	Lyophilized powder (original buffer 1X PBS, pH 7.3, 8% trehalose)
Reconstitution Method:	For reconstitution, we recommend adding 100uL distilled water to a final antibody concentration of about 1 mg/mL. To use this carrier-free antibody for conjugation experiment, we strongly recommend performing another round of desalting process. (OriGene recommends Zeba Spin Desalting Columns, 7KMWCO from Thermo Scientific)
Purification:	Purified from mouse ascites fluids or tissue culture supernatant by affinity chromatography (protein A/G)
Conjugation:	Unconjugated
Storage:	Store at -20°C as received.
Stability:	Stable for 12 months from date of receipt.
Predicted Protein Size:	17.8 kDa
Gene Name:	cancer/testis antigen 1B
Database Link:	NP_001318 Entrez Gene 1485 Human P78358
Background:	Cancer/testis antigens, such as CTAG1B, are expressed in a variety of malignant tumors but solely in testis among normal adult tissues (Yoshida et al., 2006 [PubMed 16596224]). [supplied by OMIM]

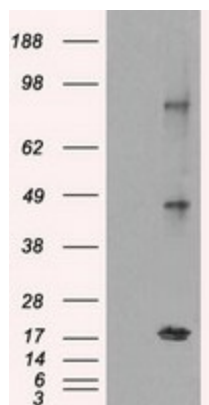


[View online »](#)

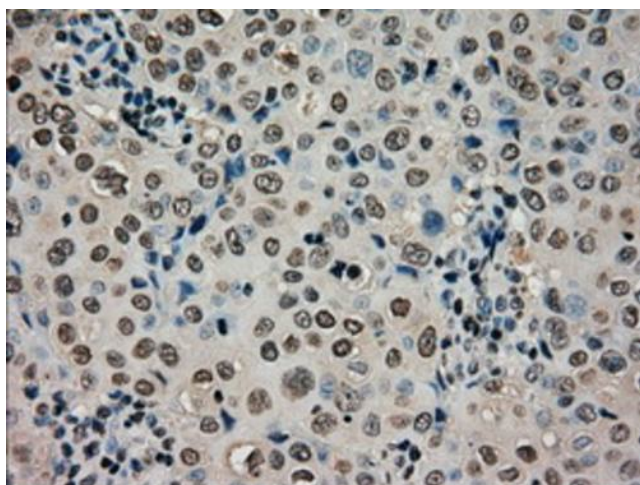
Synonyms: CT6.1; CTAG; CTAG1; ESO1; LAGE-2; LAGE2B; NY-ESO-1

Protein Families: Druggable Genome

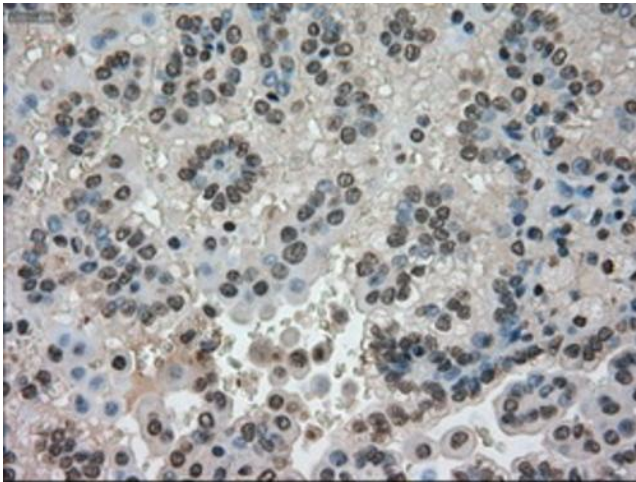
Product images:



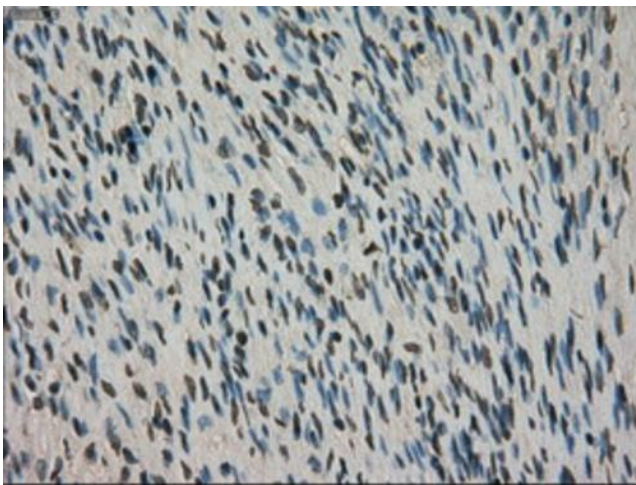
HEK293T cells were transfected with the pCMV6-ENTRY control (Left lane) or pCMV6-ENTRY CTAG1B ([RC213318], Right lane) cDNA for 48 hrs and lysed. Equivalent amounts of cell lysates (5 ug per lane) were separated by SDS-PAGE and immunoblotted with anti-CTAG1B. Positive lysates [LY400527] (100ug) and [LC400527] (20ug) can be purchased separately from OriGene.



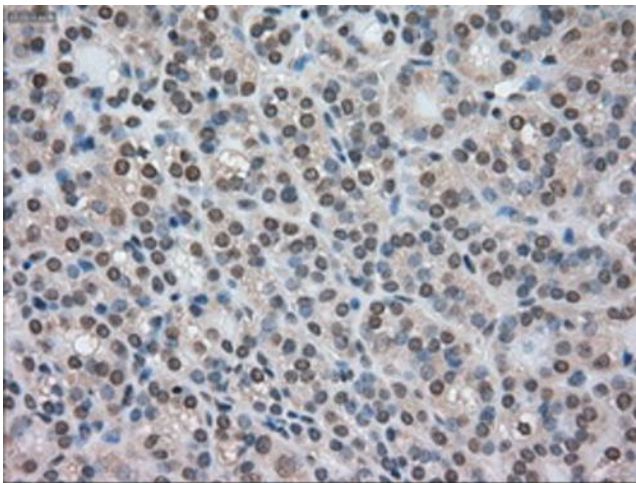
Immunohistochemical staining of paraffin-embedded Adenocarcinoma of Human breast tissue using anti-CTAG1B mouse monoclonal antibody. (Heat-induced epitope retrieval by 10mM citric buffer, pH6.0, 100°C for 10min, [TA500519])



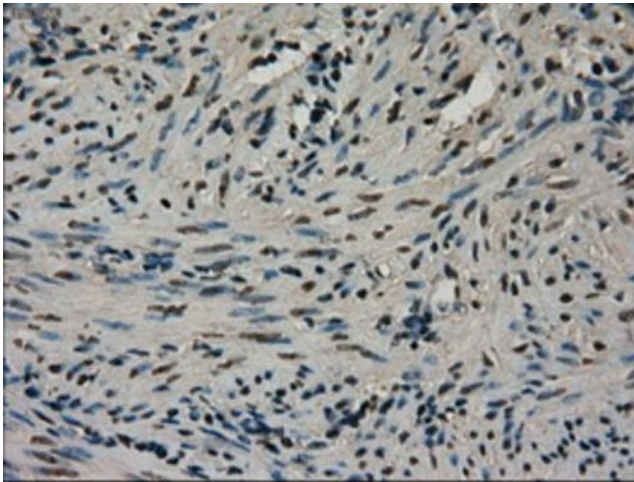
Immunohistochemical staining of paraffin-embedded Carcinoma of Human kidney tissue using anti-CTAG1B mouse monoclonal antibody. (Heat-induced epitope retrieval by 10mM citric buffer, pH6.0, 100°C for 10min, [TA500519])



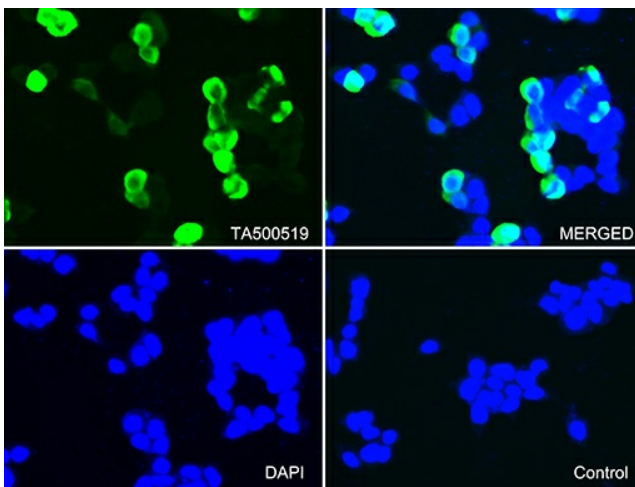
Immunohistochemical staining of paraffin-embedded Human Ovary tissue within the normal limits using anti-CTAG1B mouse monoclonal antibody. (Heat-induced epitope retrieval by 10mM citric buffer, pH6.0, 100°C for 10min, [TA500519])



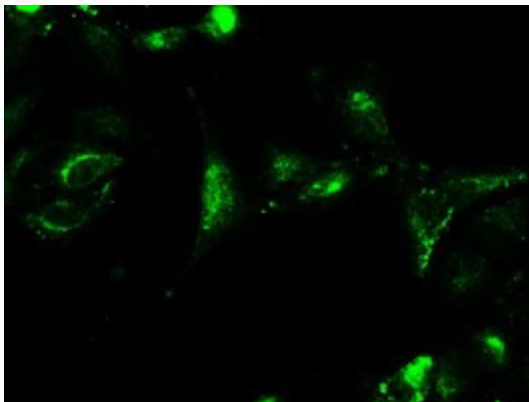
Immunohistochemical staining of paraffin-embedded Carcinoma of Human thyroid tissue using anti-CTAG1B mouse monoclonal antibody. (Heat-induced epitope retrieval by 10mM citric buffer, pH6.0, 100°C for 10min, [TA500519])



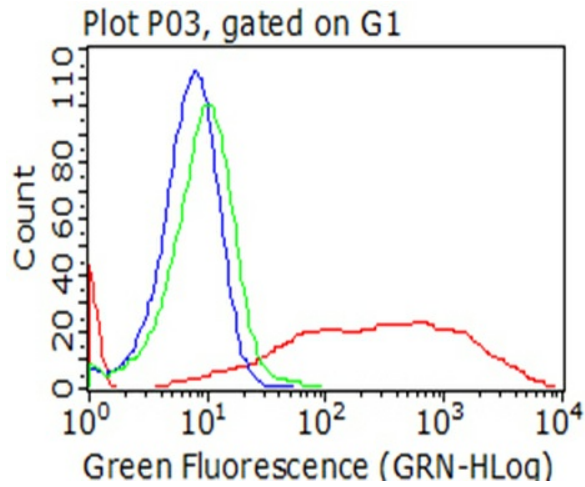
Immunohistochemical staining of paraffin-embedded Human endometrium tissue within the normal limits using anti-CTAG1B mouse monoclonal antibody. (Heat-induced epitope retrieval by 10mM citric buffer, pH6.0, 100°C for 10min, [TA500519])



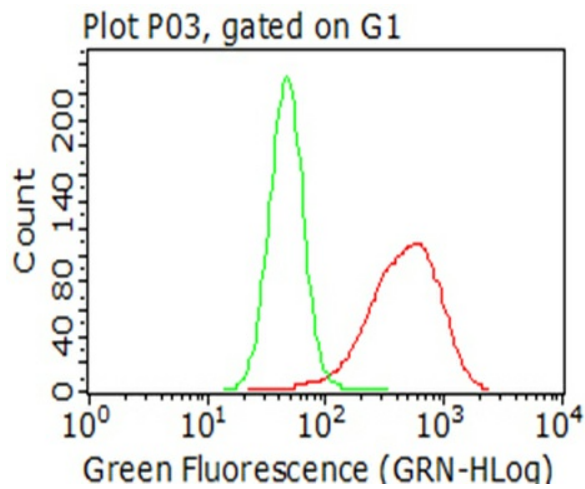
Immunofluorescent staining of 293T cells transfected by pCMV6-ENTRY CTAG1B ([RC213318]) using anti-CTAG1B antibody ([TA500519]/green, upper left; DAPI/blue, lower left; MERGED, upper right). 293T cells transfected with empty vector served as a negative control (MERGED, lower right) (1:100).



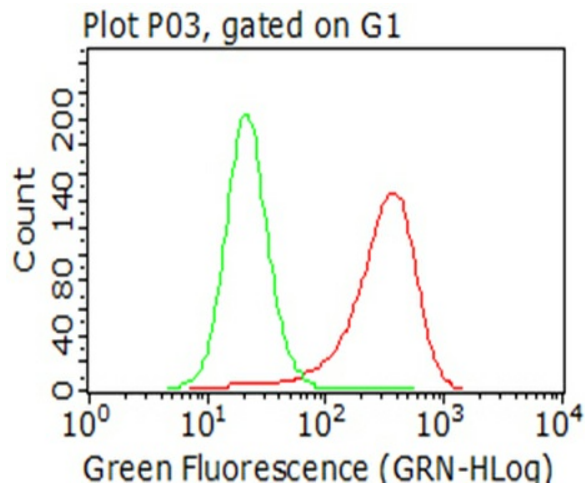
Immunofluorescent staining of A549 cells using anti-CTAG1B mouse monoclonal antibody ([TA500519]).



Flow cytometric analysis of living 293T cells transfected with CTAG1B overexpression plasmid ([RC213318]), Red)/empty vector ([PS100001], Blue) using anti-CTAG1B antibody ([TA500519]). Cells incubated with a non-specific antibody (Green) were used as isotype control (1:100).



Flow cytometric analysis of living NCI-H1299 cells, using anti-CTAG1B antibody ([TA500519], Red), compared to an isotype control (green) (1:100).



Flow cytometric analysis of living A375 cells, using anti-CTAG1B antibody ([TA500519], Red), compared to an isotype control (green) (1:100).