

## Product datasheet for **CF500499**

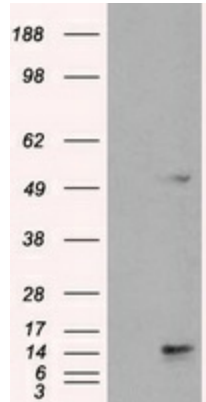
### TMEM100 Mouse Monoclonal Antibody [Clone ID: OTI2D3]

#### Product data:

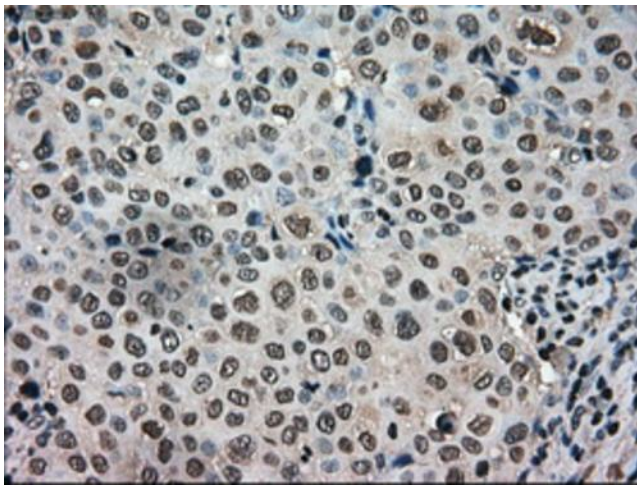
Product Type:	Primary Antibodies
Clone Name:	OTI2D3
Applications:	IHC, WB
Recommended Dilution:	WB 1:500 IHC 1:50
Reactivity:	Human, Mouse, Rat
Host:	Mouse
Isotype:	IgG1
Clonality:	Monoclonal
Immunogen:	Full-length protein expressed in 293T cell transfected with human TMEM100 expression vector
Formulation:	Lyophilized powder (original buffer 1X PBS, pH 7.3, 8% trehalose)
Reconstitution Method:	For reconstitution, we recommend adding 100uL distilled water to a final antibody concentration of about 1 mg/mL. To use this carrier-free antibody for conjugation experiment, we strongly recommend performing another round of desalting process. (OriGene recommends Zeba Spin Desalting Columns, 7KMWCO from Thermo Scientific)
Purification:	Purified from mouse ascites fluids or tissue culture supernatant by affinity chromatography (protein A/G)
Conjugation:	Unconjugated
Storage:	Store at -20°C as received.
Stability:	Stable for 12 months from date of receipt.
Predicted Protein Size:	14.4 kDa
Gene Name:	transmembrane protein 100
Database Link:	<a href="#">NP_060756</a> <a href="#">Entrez Gene 55273 Human</a> <a href="#">Q9NV29</a>
Synonyms:	FLJ10970; FLJ37856
Protein Families:	Transmembrane



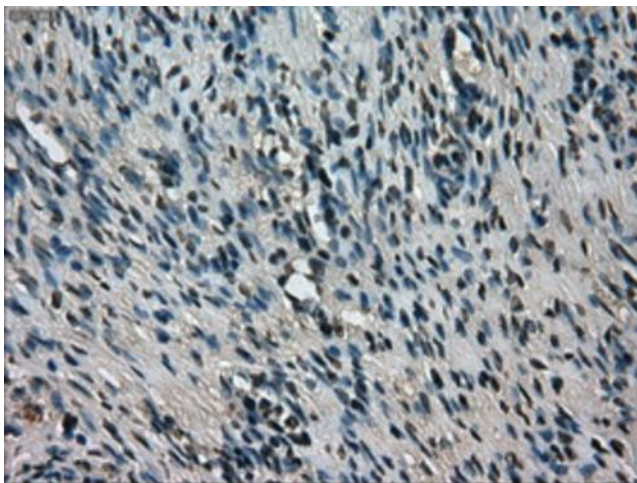
[View online »](#)

**Product images:**


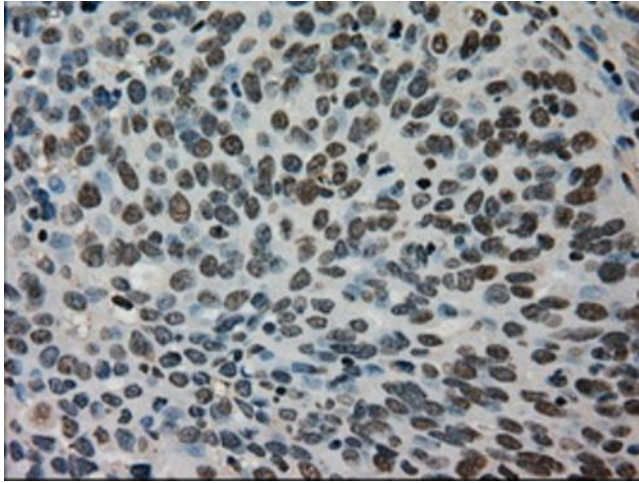
HEK293T cells were transfected with the pCMV6-ENTRY control (Left lane) or pCMV6-ENTRY TMEM100 ([RC203980], Right lane) cDNA for 48 hrs and lysed. Equivalent amounts of cell lysates (5 ug per lane) were separated by SDS-PAGE and immunoblotted with anti-TMEM100. Positive lysates [LY402665] (100ug) and [LC402665] (20ug) can be purchased separately from OriGene.



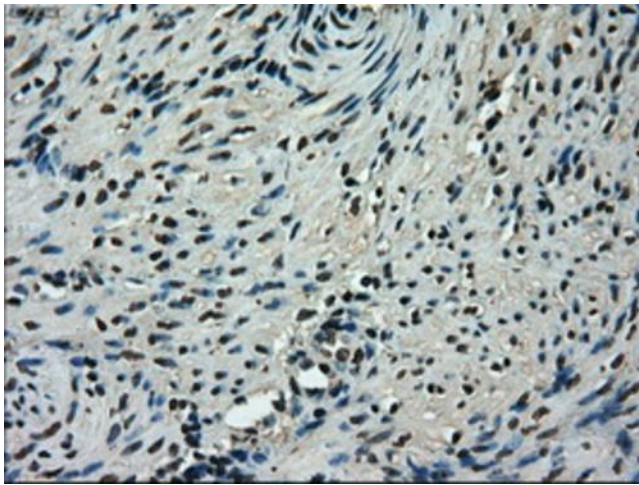
Immunohistochemical staining of paraffin-embedded Adenocarcinoma of breast tissue using anti-TMEM100 mouse monoclonal antibody. (Heat-induced epitope retrieval by 10mM citric buffer, pH6.0, 100°C for 10min, [TA500499], Dilution 1:50)



Immunohistochemical staining of paraffin-embedded Ovary tissue within the normal limits using anti-TMEM100 mouse monoclonal antibody. (Heat-induced epitope retrieval by 10mM citric buffer, pH6.0, 100°C for 10min, [TA500499], Dilution 1:50)



Immunohistochemical staining of paraffin-embedded Adenocarcinoma of ovary tissue using anti-TMEM100mouse monoclonal antibody. (Heat-induced epitope retrieval by 10mM citric buffer, pH6.0, 100°C for 10min, [TA500499], Dilution 1:50)



Immunohistochemical staining of paraffin-embedded endometrium tissue within the normal limits using anti-TMEM100mouse monoclonal antibody. (Heat-induced epitope retrieval by 10mM citric buffer, pH6.0, 100°C for 10min, [TA500499], Dilution 1:50)