

## Product datasheet for **CF500096**

### SOX17 Mouse Monoclonal Antibody [Clone ID: OTI2G8]

#### Product data:

Product Type:	Primary Antibodies
Clone Name:	OTI2G8
Applications:	IF, IHC, WB
Recommended Dilution:	WB 1:1000~2000, IHC 1:50, IF 1:50~100
Reactivity:	Human, Dog, Mouse, Rat
Host:	Mouse
Isotype:	IgG2b
Clonality:	Monoclonal
Immunogen:	Human recombinant protein fragment corresponding to amino acids 177-414 of human SOX17 (NP_071899) produced in E.coli.
Formulation:	Lyophilized powder (original buffer 1X PBS, pH 7.3, 8% trehalose)
Reconstitution Method:	For reconstitution, we recommend adding 100uL distilled water to a final antibody concentration of about 1 mg/mL. To use this carrier-free antibody for conjugation experiment, we strongly recommend performing another round of desalting process. (OriGene recommends Zeba Spin Desalting Columns, 7KMWCO from Thermo Scientific)
Purification:	Purified from mouse ascites fluids or tissue culture supernatant by affinity chromatography (protein A/G)
Conjugation:	Unconjugated
Storage:	Store at -20°C as received.
Stability:	Stable for 12 months from date of receipt.
Predicted Protein Size:	43.9 kDa
Gene Name:	SRY-box transcription factor 17
Database Link:	<a href="#">NP_071899</a> <a href="#">Entrez Gene 20671 MouseEntrez Gene 312936 RatEntrez Gene 486955 DogEntrez Gene 64321 Human Q9H6I2</a>



[View online »](#)

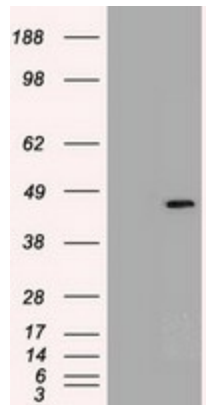
**Background:** SOX17 is a member of the SOX (SRY-related HMG-box) family of transcription factors involved in the regulation of embryonic development and in the determination of the cell fate. It may act as a transcriptional regulator after forming a protein complex with other proteins.

**Synonyms:** VUR3

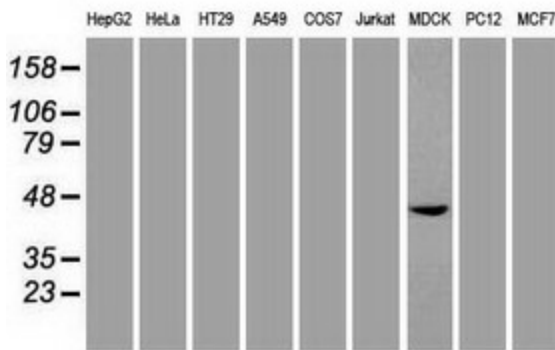
**Protein Families:** Transcription Factors

**Protein Pathways:** Wnt signaling pathway

**Product images:**



HEK293T cells were transfected with the pCMV6-ENTRY control (Left lane) or pCMV6-ENTRY SOX17 ([RC220888], Right lane) cDNA for 48 hrs and lysed. Equivalent amounts of cell lysates (5 ug per lane) were separated by SDS-PAGE and immunoblotted with anti-SOX17. Positive lysates [LY411669] (100ug) and [LC411669] (20ug) can be purchased separately from OriGene.



Western blot analysis of extracts (35ug) from 9 different cell lines by using anti-SOX17 monoclonal antibody.

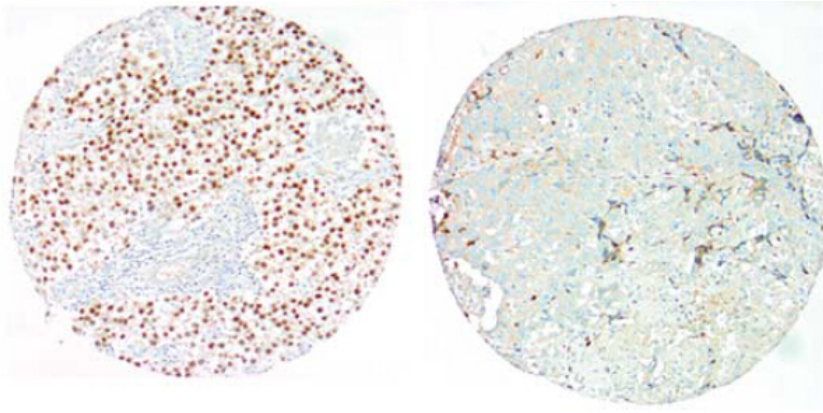
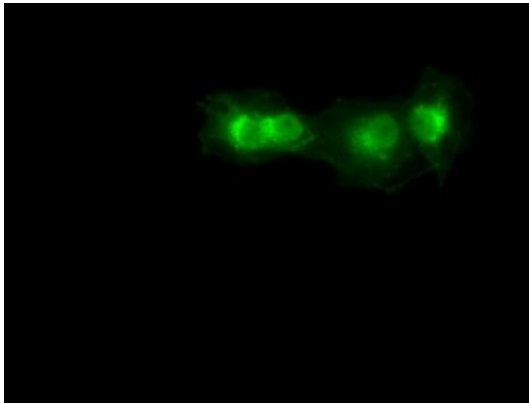
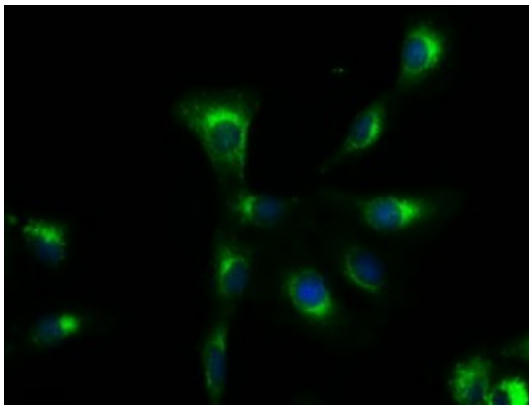


Figure from citation: Corresponding conventional and immunohistochemical stains of human seminoma and embryonal carcinoma by using anti-SOX17 antibody. Seminoma: positivity for SOX17 (Left); Embryonal carcinoma: negative staining for SOX17 (Right). Dilution: 1:2000 [View Citation](#)

SOX17



Anti-SOX17 mouse monoclonal antibody ([TA500096]) immunofluorescent staining of COS7 cells transiently transfected by pCMV6-ENTRY SOX17 ([RC220888]).



Immunofluorescent staining of A549 cells using anti-SOX17 mouse monoclonal antibody ([TA500096]).