

Product datasheet for **CF190265**

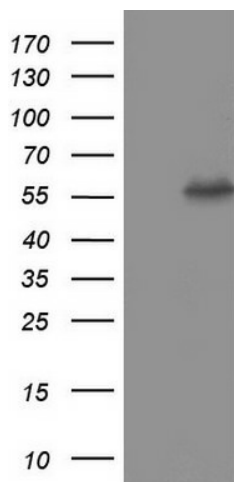
PKM2 Mouse Monoclonal Antibody [Clone ID: OTI14C7]

Product data:

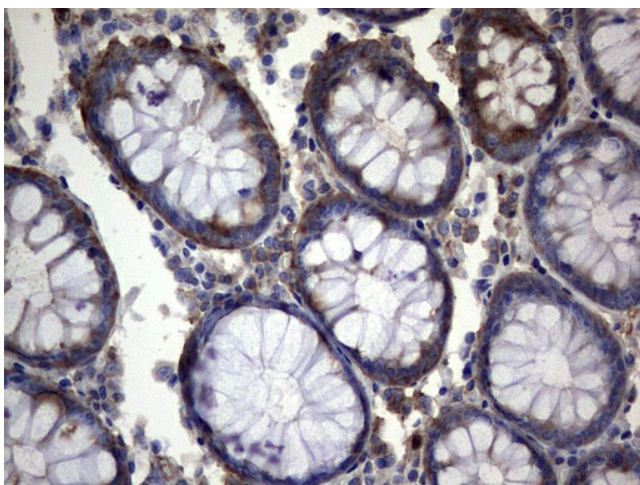
Product Type:	Primary Antibodies
Clone Name:	OTI14C7
Applications:	IHC, WB
Recommended Dilution:	WB 1:2000, IHC 1:150
Reactivity:	Human
Host:	Mouse
Isotype:	IgG1
Clonality:	Monoclonal
Immunogen:	Synthetic peptide corresponding to the region encoded by PKM gene M2 isoform.
Formulation:	Lyophilized powder (original buffer 1X PBS, pH 7.3, 8% trehalose)
Reconstitution Method:	For reconstitution, we recommend adding 100uL distilled water to a final antibody concentration of about 1 mg/mL. To use this carrier-free antibody for conjugation experiment, we strongly recommend performing another round of desalting process. (OriGene recommends Zeba Spin Desalting Columns, 7KMWCO from Thermo Scientific)
Purification:	Purified from mouse ascites fluids or tissue culture supernatant by affinity chromatography (protein A/G)
Conjugation:	Unconjugated
Storage:	Store at -20°C as received.
Stability:	Stable for 12 months from date of receipt.



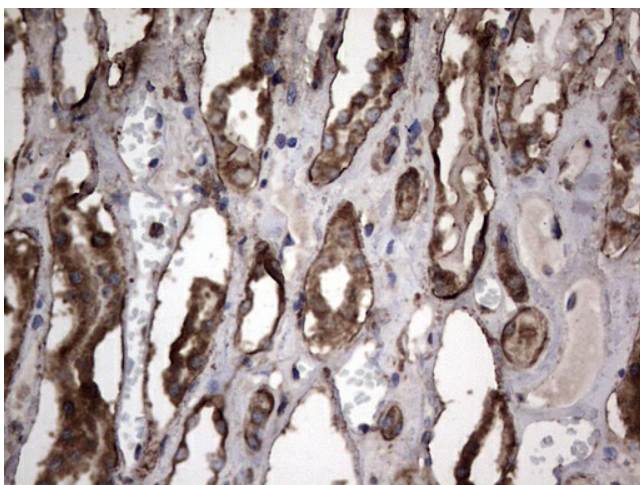
[View online »](#)

Product images:

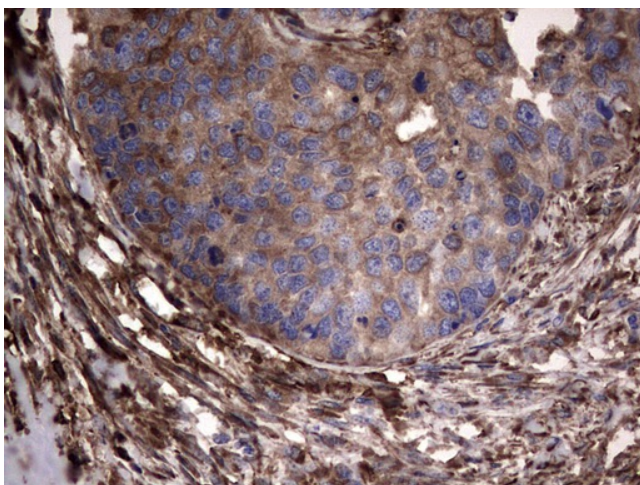
HEK293T cells were transfected with the pCMV6-ENTRY control (Left lane) or pCMV6-ENTRY PKM2 ([RC201855], Right lane) cDNA for 48 hrs and lysed. Equivalent amounts of cell lysates (5 ug per lane) were separated by SDS-PAGE and immunoblotted with anti-PKM2.



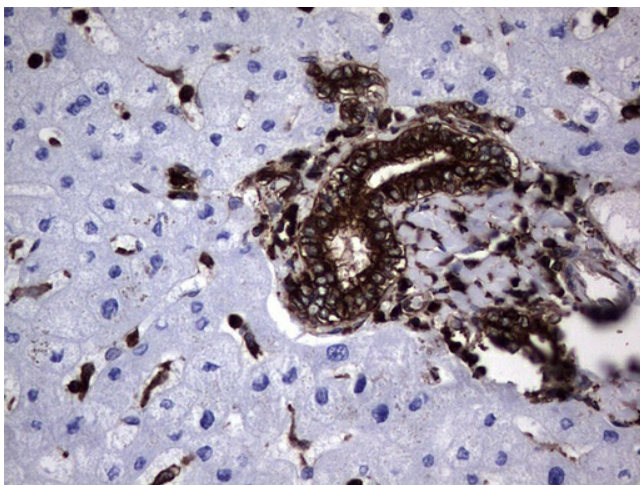
Immunohistochemical staining of paraffin-embedded Human colon tissue within the normal limits using anti-PKM2 Mouse monoclonal antibody. ([TA190265])



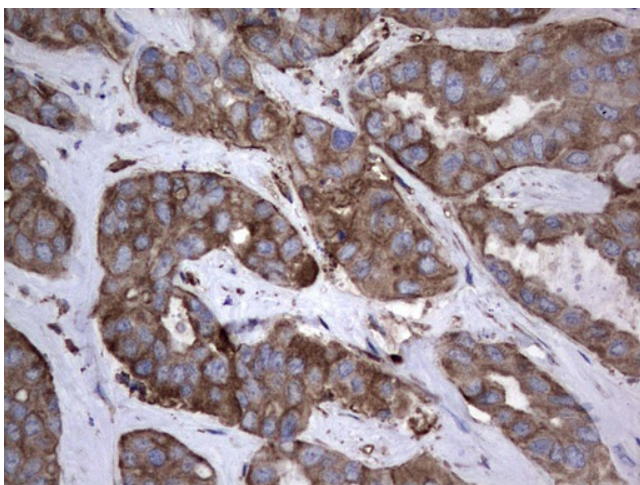
Immunohistochemical staining of paraffin-embedded Human Kidney tissue within the normal limits using anti-PKM2 Mouse monoclonal antibody. (TA190265)



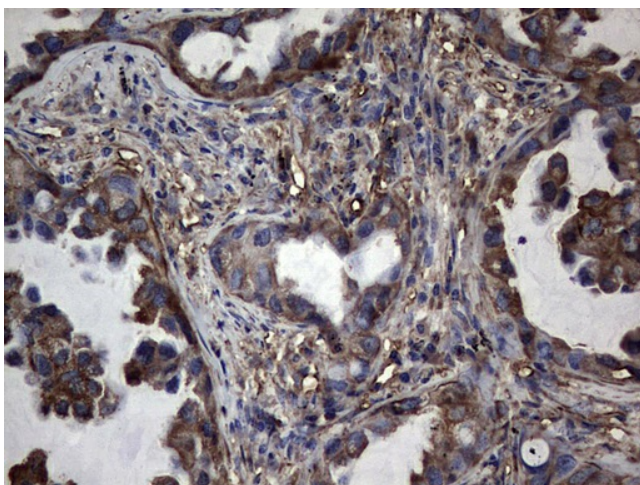
Immunohistochemical staining of paraffin-embedded Carcinoma of Human kidney tissue using anti-PKM2 Mouse monoclonal antibody. (TA190265)



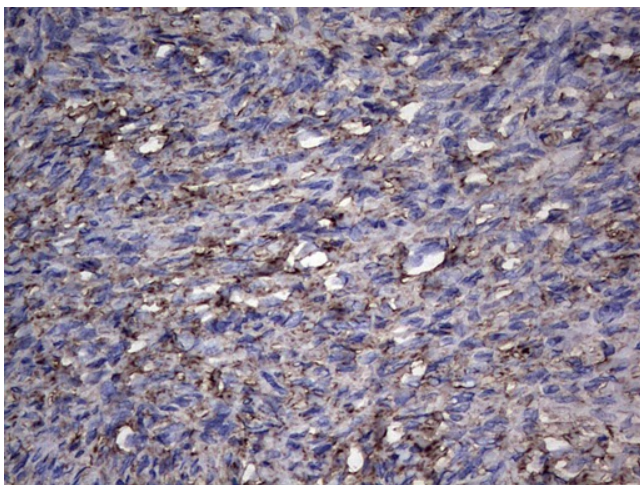
Immunohistochemical staining of paraffin-embedded Human liver tissue within the normal limits using anti-PKM2 Mouse monoclonal antibody. (TA190265)



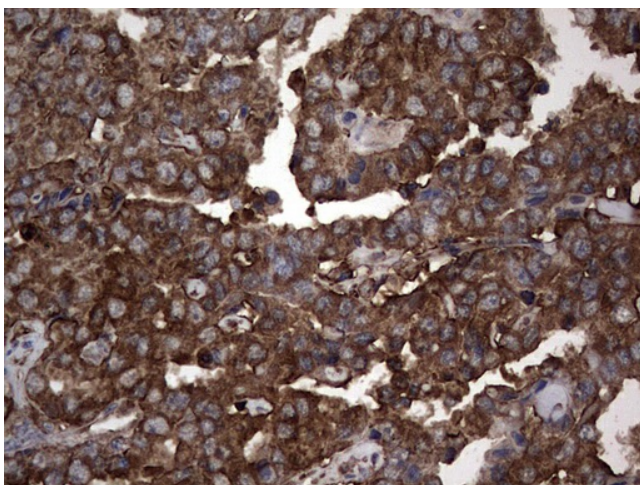
Immunohistochemical staining of paraffin-embedded Carcinoma of Human liver tissue using anti-PKM2 Mouse monoclonal antibody. ([TA190265])



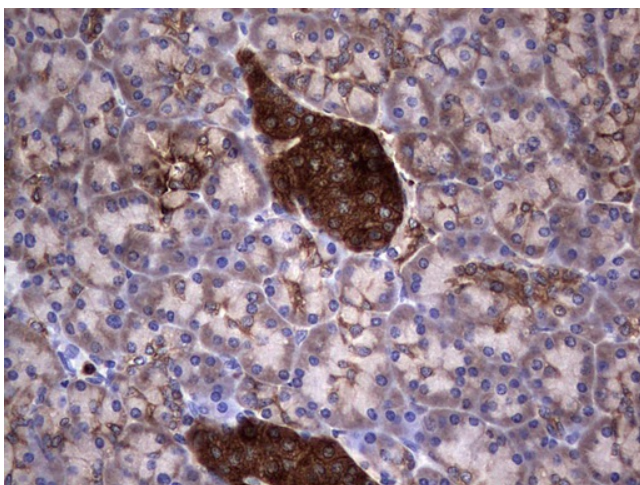
Immunohistochemical staining of paraffin-embedded Carcinoma of Human lung tissue using anti-PKM2 Mouse monoclonal antibody. ([TA190265])



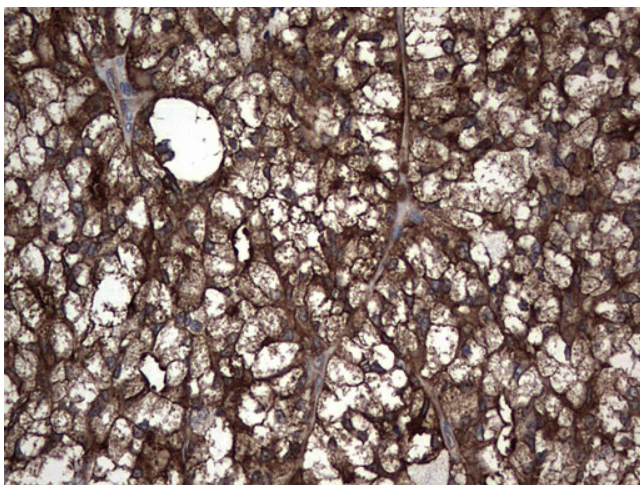
Immunohistochemical staining of paraffin-embedded Human Ovary tissue within the normal limits using anti-PKM2 Mouse monoclonal antibody. ([TA190265])



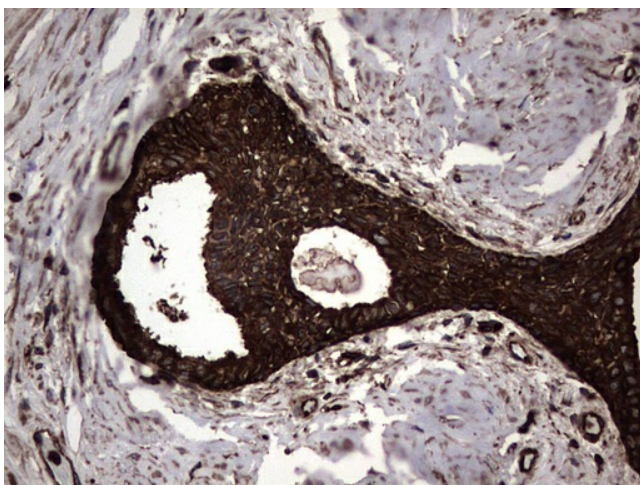
Immunohistochemical staining of paraffin-embedded Adenocarcinoma of Human ovary tissue using anti-PKM2 Mouse monoclonal antibody. ([TA190265])



Immunohistochemical staining of paraffin-embedded Human pancreas tissue within the normal limits using anti-PKM2 Mouse monoclonal antibody. ([TA190265])



Immunohistochemical staining of paraffin-embedded Carcinoma of Human thyroid tissue using anti-PKM2 Mouse monoclonal antibody. ([TA190265])



Immunohistochemical staining of paraffin-embedded Carcinoma of Human prostate tissue using anti-PKM2 Mouse monoclonal antibody. (TA190265)