

Product datasheet for **CF190077**

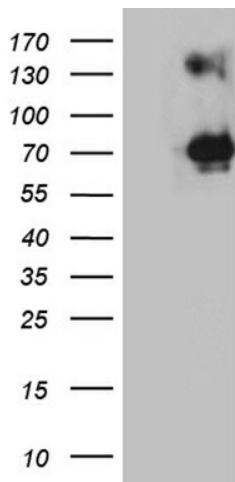
RNA5-8SN2 Mouse Monoclonal Antibody [Clone ID: OTI3F7]

Product data:

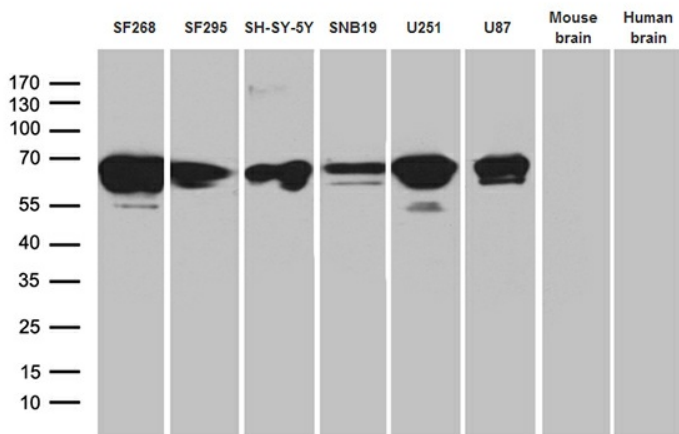
Product Type:	Primary Antibodies
Clone Name:	OTI3F7
Applications:	IHC, WB
Recommended Dilution:	WB 1:500, IHC 1:2000
Reactivity:	Human
Host:	Mouse
Isotype:	IgG1
Clonality:	Monoclonal
Immunogen:	Synthetic peptide corresponding to the conserved region of human neurofilament heavy polypeptide (NEFH), medium polypeptide (NEFM) and light polypeptide (NF68, NEFL)
Formulation:	Lyophilized powder (original buffer 1X PBS, pH 7.3, 8% trehalose)
Reconstitution Method:	For reconstitution, we recommend adding 100uL distilled water to a final antibody concentration of about 1 mg/mL. To use this carrier-free antibody for conjugation experiment, we strongly recommend performing another round of desalting process. (OriGene recommends Zeba Spin Desalting Columns, 7KMWCO from Thermo Scientific)
Purification:	Purified from mouse ascites fluids or tissue culture supernatant by affinity chromatography (protein A/G)
Conjugation:	Unconjugated
Storage:	Store at -20°C as received.
Stability:	Stable for 12 months from date of receipt.
Gene Name:	RNA, 5.8S ribosomal N2



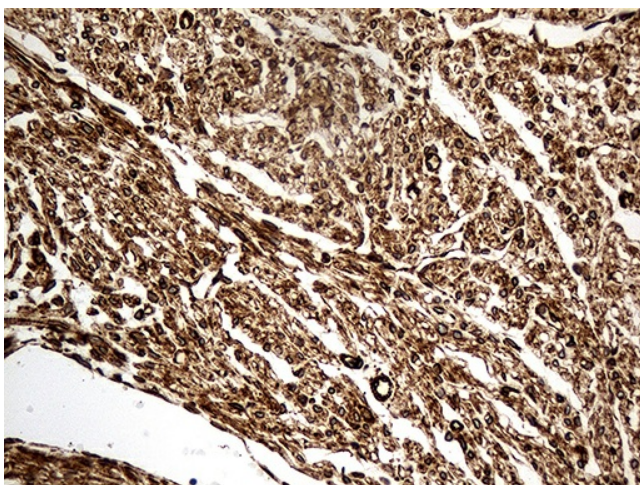
[View online »](#)

Product images:


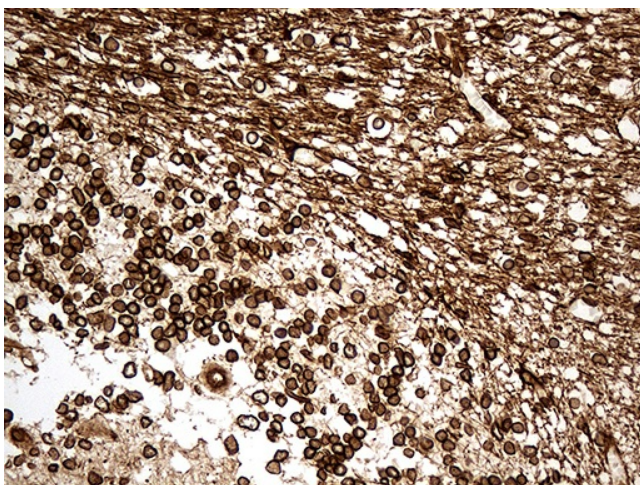
HEK293T cells were transfected with the pCMV6-ENTRY control (Left lane) or pCMV6-ENTRY Neurofilament ([RC000000], Right lane) cDNA for 48 hrs and lysed. Equivalent amounts of cell lysates (5 ug per lane) were separated by SDS-PAGE and immunoblotted with anti-Neurofilament (1:500).



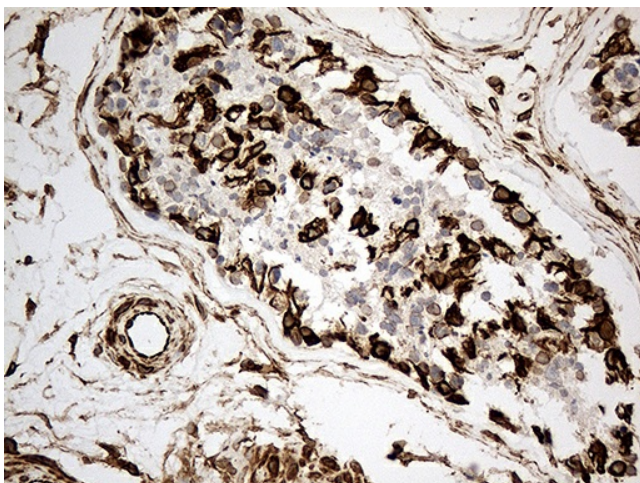
Western blot analysis of extracts (35ug) from 6 different cell lines and 2 different tissue lysates by using anti-Neurofilament monoclonal antibody (1:500).



Immunohistochemical staining of paraffin-embedded Human adult heart tissue within the normal limits using anti-Neurofilament mouse monoclonal antibody. (Heat-induced epitope retrieval by 1mM EDTA in 10mM Tris buffer (pH8.5) at 120°C for 3min, [TA190077]) (1:2000)



Immunohistochemical staining of paraffin-embedded Human embryonic cerebellum within the normal limits using anti-Neurofilament mouse monoclonal antibody. (Heat-induced epitope retrieval by 1mM EDTA in 10mM Tris buffer (pH8.5) at 120°C for 3min, [TA190077]) (1:2000)



Immunohistochemical staining of paraffin-embedded Human testicle tissue within the normal limits using anti-Neurofilament mouse monoclonal antibody. (Heat-induced epitope retrieval by 1mM EDTA in 10mM Tris buffer (pH8.5) at 120°C for 3min, [TA190077]) (1:2000)