

Product datasheet for **CD564127**

Tissue Genomic DNA, Pancreas

Product data:

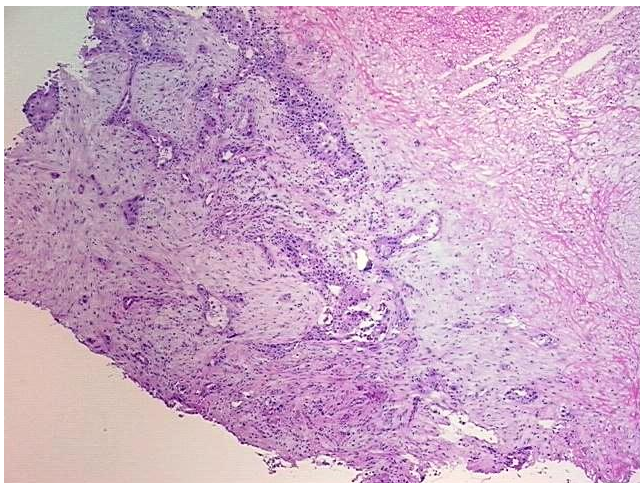
Product Type:	Genomic DNA
Disease State:	Cancer
Diagnosis Category:	Pancreatic Cancer
Tissue:	Pancreas
Frozen Sample ID:	FR0002B112
Case ID:	CI0000009651
Prep:	A
Vial ID:	DN000006FC
Tissue of Origin:	Pancreas
Site of Finding:	Pancreas
Appearance:	Tumor
Sample Diagnosis (from Pathology Verification):	Adenocarcinoma of pancreas, ductal
Normal:	0%
Lesional:	0%
Tumor:	30%
Tumor Hypo/Acellular Stroma:	0%
Tumor Hypercellular Stroma:	45%
Necrosis:	25%
Pathology Verification notes from H&E review:	tumor stroma contains prominent neutrophilic and lymphoplasmacytic infiltrate
Bioanalyzer Ratio (28S/18S):	2



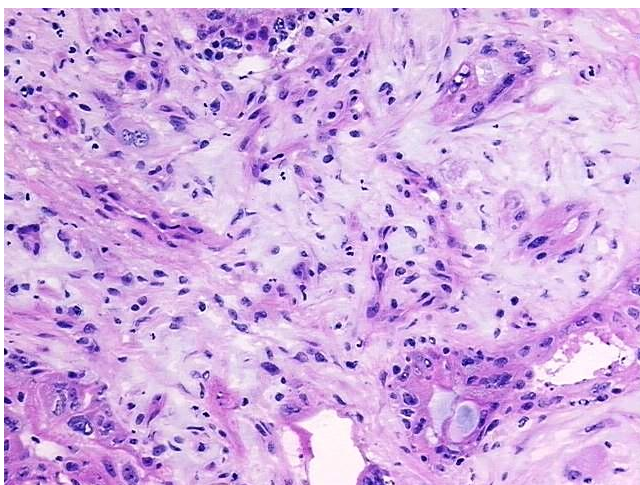
[View online »](#)

CASE Diagnosis (from medical center path report):	Adenocarcinoma of pancreas, ductal
Age:	75
Gender:	Male
Race:	White or Caucasian
Tumor Grade:	AJCC G2: Moderately differentiated
Minimum Stage Grouping:	IIB
T (Extent of Primary Tumor):	T3
N (Lymph node metastasis):	N1
M (Distant metastasis):	MX
Storage:	Store the total DNA -80°C.
Stability:	These products are stable for one year from date of shipping when stored at -80°C without repeated freeze/thaws.

Product images:



DNA - 4x.



DNA - 20x.



DNA PCR Image