

Product datasheet for **CD563406**

Tissue Genomic DNA, Breast

Product data:

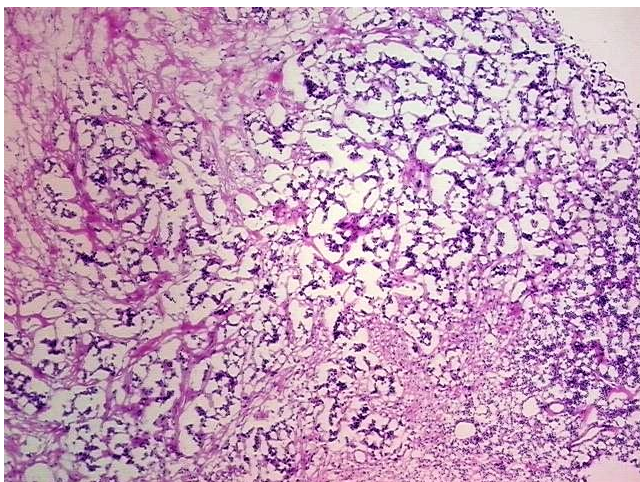
Product Type:	Genomic DNA
Disease State:	Cancer
Diagnosis Category:	Breast Cancer
Tissue:	Breast
Frozen Sample ID:	FR0002E971
Case ID:	CI0000011284
Prep:	A
Vial ID:	DN00000900
Tissue of Origin:	Breast
Site of Finding:	Breast
Appearance:	Tumor
Sample Diagnosis (from Pathology Verification):	Adenocarcinoma of breast, ductal
Normal:	0%
Lesional:	0%
Tumor:	55%
Tumor Hypo/Acellular Stroma:	20%
Tumor Hypercellular Stroma:	25%
Necrosis:	0%
Pathology Verification notes from H&E review:	cellular tumor stroma: 80% desmoplasia, 20% mixed inflammatory cells. hypo/acellular tumor stroma: 100% fibrosis
Bioanalyzer Ratio (28S/18S):	2.01



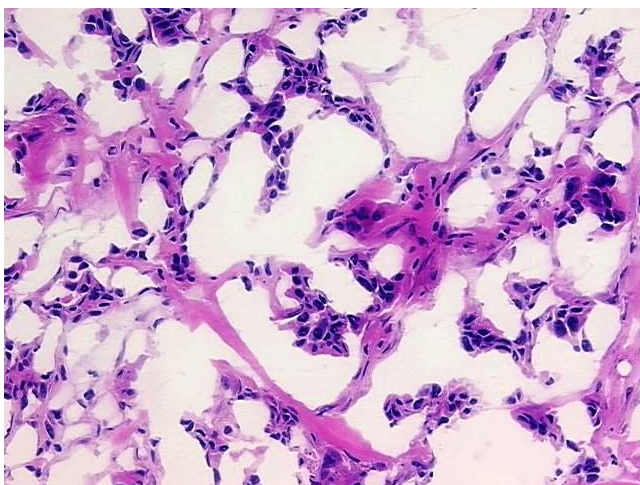
[View online »](#)

CASE Diagnosis (from medical center path report):	Adenocarcinoma of breast, ductal
Age:	35
Gender:	Female
Race:	White or Caucasian
Tumor Grade:	Nottingham G3: 8-9 points High combined grade (unfavorable)
Minimum Stage Grouping:	IIA
T (Extent of Primary Tumor):	T2
N (Lymph node metastasis):	N0 (i-)
M (Distant metastasis):	MX
Diagnostic Test Results:	Cytokeratin (Pan) ~ Keratin, Pan ! by IHC,Negative; Progesterone receptor ~ PR ! by IHC,Negative; Estrogen receptor ~ ER ! by IHC,Positive; HER2 ~ ERBB2 ~ Neu ! by IHC,Positive
Storage:	Store the total DNA -80°C.
Stability:	These products are stable for one year from date of shipping when stored at -80°C without repeated freeze/thaws.

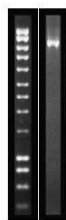
Product images:



DNA - 4x.



DNA - 20x.



DNA PCR Image