

## Product datasheet for **CB631695**

### Frozen Tissue Blocks, Lymph node

#### Product data:

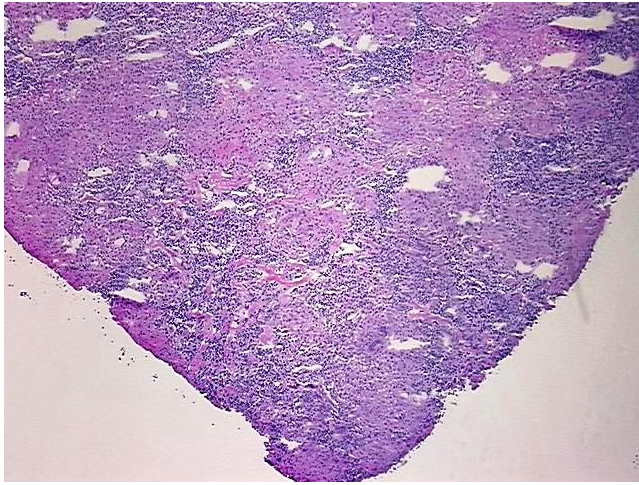
|   |   |
|---|---|
| Product Type:                                     | Frozen Blocks   |
| Disease State:                                    | Other Disease   |
| Diagnosis Category:                               | Granuloma   |
| Tissue:   | Lymph node  |
| Frozen Sample ID:                                 | FR00028449  |
| Case ID:  | CU0000006762  |
| Tissue of Origin:                                 | Lymph node  |
| Site of Finding:                                  | Lymph node  |
| Appearance:                                       | Lesion  |
| Sample Diagnosis (from Pathology Verification):   | Granuloma of lymph node   |
| Normal:   | 20%   |
| Lesional:   | 80%   |
| Tumor:  | 0%  |
| Tumor Hypo/Acellular Stroma:                      | 0%  |
| Tumor Hypercellular Stroma:                       | 0%  |
| Necrosis:   | 0%  |
| Pathology Verification notes from H&E review:     | lesion: the morphologic findings are compatible with a diagnosis of sarcoidosis |
| CASE Diagnosis (from medical center path report): | Granuloma of lymph node   |
| Age:  | 59  |
| Gender:   | Male  |
| Storage:  | Store frozen tissue blocks at -80°C.  |



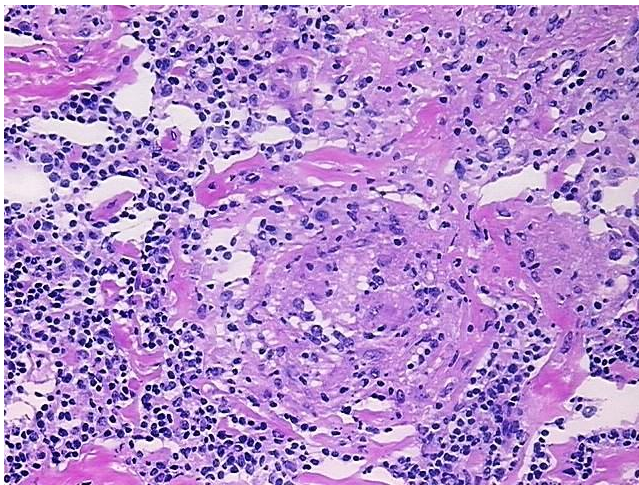
[View online »](#)

**Stability:** Frozen tissue blocks are stable for at least one year from date of shipping when stored at -80°C.

**Product images:**



4x Image



20x Image