

Product datasheet for **CB501755**

Frozen Tissue Blocks, Colon

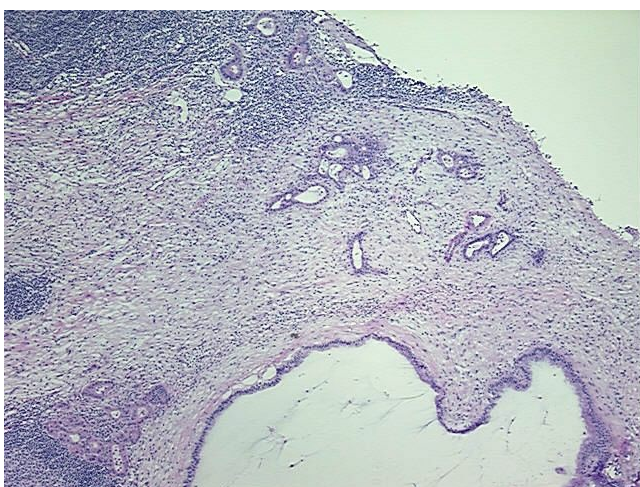
Product data:

Product Type:	Frozen Blocks
Disease State:	Cancer
Diagnosis Category:	Colorectal Cancer
Tissue:	Colon
Frozen Sample ID:	FR0000584C
Case ID:	CI0000000223
Tissue of Origin:	Colon
Site of Finding:	Lymph node
Appearance:	Tumor
Sample Diagnosis (from Pathology Verification):	Adenocarcinoma of colon, metastatic
Normal:	0%
Lesional:	0%
Tumor:	30%
Tumor Hypo/Acellular Stroma:	0%
Tumor Hypercellular Stroma:	65%
Necrosis:	5%
Pathology Verification notes from H&E review:	lymph node with metastatic colon adenocarcinoma; a few residual lymphoid follicles present in the tumor stroma
CASE Diagnosis (from medical center path report):	Adenocarcinoma of colon, metastatic
Age:	71
Gender:	Female
Tumor Grade:	Not Reported

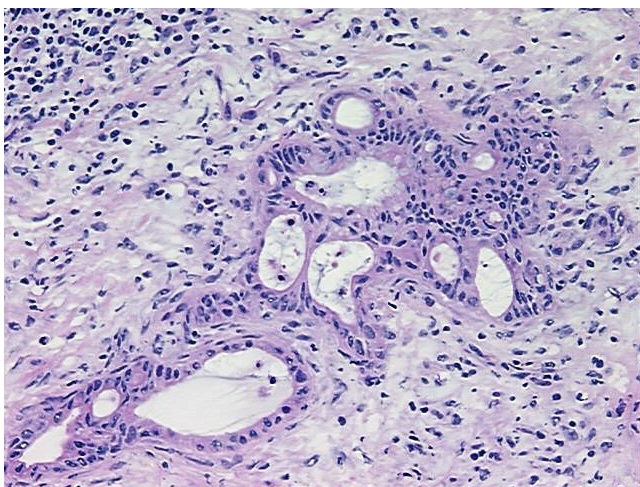


[View online »](#)

Minimum Stage Grouping:	IIIA
T (Extent of Primary Tumor):	pTX
N (Lymph node metastasis):	pN1
M (Distant metastasis):	pMX
Storage:	Store frozen tissue blocks at -80°C.
Stability:	Frozen tissue blocks are stable for at least one year from date of shipping when stored at -80°C.

Product images:

4x Image



20x Image