

## Product datasheet for **BP4003**

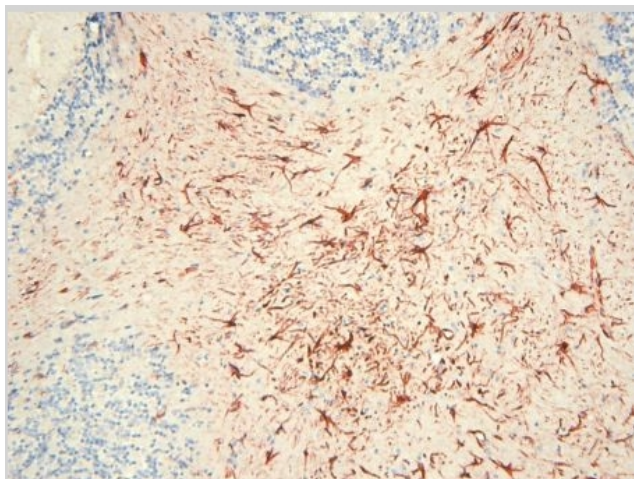
### CD88 / C5R1 Chicken Polyclonal Antibody

#### Product data:

Product Type:	Primary Antibodies
Applications:	IHC
Recommended Dilution:	<b>Immunohistochemistry on Frozen Sections:</b> 1 µg/ml (1/1000).
Reactivity:	Mouse, Rat
Host:	Chicken
Clonality:	Polyclonal
Immunogen:	Synthetic C-terminal peptide coupled to carrier protein. The antibody was generated against the Cytoplasmic carboxy-terminal portion of the mouse C5aR.
Specificity:	This antibody detects CD88 at cytoplasmic domain.
Formulation:	PBS, pH 7.2 State: Aff - Purified State: Liquid purified Ig fraction Preservative: 0.09% Sodium Azide
Concentration:	1.0 mg/ml
Purification:	Affinity Chromatography
Conjugation:	Unconjugated
Storage:	Store undiluted at 2-8°C for one month or (in aliquots) at -20°C to -70°C for longer. <b>Do Not Freeze</b> working dilutions. Avoid repeated freezing and thawing.
Stability:	Shelf life: One year from despatch.
Gene Name:	complement component 5a receptor 1
Database Link:	<a href="#">Entrez Gene 12273 Mouse P30993</a>
Background:	The complement C5a anaphylatoxin receptor (C5aR, CD88) is a seven-transmembrane G-protein coupled chemoattractant receptor that mediates numerous cellular responses. C5aR can be detected in various levels in practically all tissues.
Synonyms:	C5a-R, C5aR, C5AR1, Complement Component 5a Receptor 1



[View online »](#)

**Product images:**

**Figure 1.** Immunohistochemistry on frozen sections IHC on Mouse brain frozen using C5a Receptor (C5aR, CD88) antibody BP4003.