

Product datasheet for **BM753F**

Tubulin (TUBA1B) (Loading Control) Mouse Monoclonal Antibody [Clone ID: TU-01]

Product data:

Product Type:	Primary Antibodies
Clone Name:	TU-01
Applications:	IF, IHC
Recommended Dilution:	Immunofluorescence: 1/50 on fixed and permeabilized cells. Immunohistochemistry on Paraffin Sections: 10 µg/ml.
Reactivity:	All Species
Host:	Mouse
Isotype:	IgG1
Clonality:	Monoclonal
Immunogen:	Fraction of Tubulin purified from porcine brain by two cycles of polymerization-depolymerization.
Specificity:	The antibody recognizes the defined epitope (aa 65-97) on N-terminal structural domain of alpha-Tubulin in all species (recognized epitope conserved within all species).
Formulation:	Phosphate buffered saline (PBS), pH~7.4 Label: FITC State: Liquid purified Ig fraction Preservative: 15 mM Sodium Azide Label: Fluorescein Isothiocyanate under optimum conditions. The reagent is free of unconjugated
Concentration:	lot specific
Conjugation:	FITC
Storage:	Store the antibody undiluted at 2-8°C. DO NOT FREEZE! This product is photosensitive and should be protected from light.
Stability:	Shelf life: one year from despatch.
Gene Name:	tubulin alpha 1b
Database Link:	Entrez Gene 10376 Human P68363



[View online »](#)

Background:

The microtubules are intracellular dynamic polymers made up of evolutionarily conserved polymorphic alpha/beta-tubulin heterodimers and a large number of microtubule-associated proteins (MAPs). The microtubules consist of 13 protofilaments and have an outer diameter 25 nm. Microtubules have their intrinsic polarity; highly dynamic plus ends and less dynamic minus ends. Microtubules are required for vital processes in eukaryotic cells including mitosis, meiosis, maintenance of cell shape and intracellular transport. Microtubules are also necessary for movement of cells by means of flagella and cilia. In mammalian tissue culture cells microtubules have their minus ends anchored in microtubule organizing centers (MTOCs). The GTP (guanosinotriphosphate) molecule is an essential for tubulin heterodimer to associate with other heterodimers to form microtubule. In vivo, microtubule dynamics vary considerably. Microtubule polymerization is reversible and a populations of microtubules in cells are on their minus ends either growing or shortening this phenomenon is called dynamic instability of microtubules. On a practical level, microtubules can easily be stabilized by the addition of non-hydrolysable analogues of GTP (eg. GMPPCP) or more commonly by anti-cancer drugs such as Taxol. Taxol stabilizes microtubules at room temperature for many hours. Using limited proteolysis by enzymes both tubulin subunits can be divided into N-terminal and C-terminal structural domains. The alpha-tubulin (relative molecular weight about 50 kDa) is globular protein that exists in cells as part of soluble alpha/beta-tubulin dimer or it is polymerized into microtubules. In different species it is coded by multiple tubulin genes that form tubulin classes (in human 6 genes). Expressed tubulin genes are named tubulin isotypes. Some of the tubulin isotypes are expressed ubiquitously, while some have more restricted tissue expression.

Alpha-tubulin is also subject of numerous post-translational modifications. Tubulin isotypes and their posttranslational modifications are responsible for multiple tubulin charge variants - tubulin isoforms. Heterogeneity of alpha-tubulin is concentrated in C-terminal structural domain.

Synonyms:

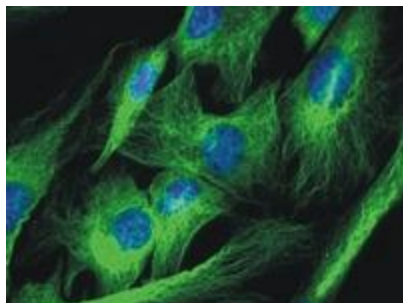
Tubulin alpha-1B chain, Tubulin alpha-ubiquitous chain, Alpha-tubulin ubiquitous, Tubulin K-alpha-1

Protein Families:

Druggable Genome

Protein Pathways:

Gap junction, Pathogenic Escherichia coli infection

Product images:

Immunofluorescence staining of 3T3 Mouse embryonal fibroblast cell line using anti-alpha-tubulin antibody (TU-01; green). Nucleus is stained with DAPI (blue).