

Product datasheet for **BM5045P**

Cytokeratin 8 (KRT8) Mouse Monoclonal Antibody [Clone ID: M20]

Product data:

Product Type:	Primary Antibodies
Clone Name:	M20
Applications:	FC, IF, IHC, WB
Recommended Dilution:	Immunoblotting: 1/100-1/1000 Flow Cytometry. Immunocytochemistry. Immunohistochemistry on Frozen Tissues: 1/100-1/200 with Avidin-biotinylated Horseradish peroxidase complex ABC as detection reagent. Immunohistochemistry on Paraffin Sections.
Reactivity:	Human, Mammalian, Mouse, Rabbit, Rat
Host:	Mouse
Isotype:	IgG1
Clonality:	Monoclonal
Immunogen:	Keratin isolated from the Human breast carcinoma cell line MCF-7
Specificity:	<i>M20</i> reacts with glandular epithelial cells (endocrine and exocrine) as well as mesothelial cells of the digestive, respiratory and urogenital tract and most adenocarcinomas derived from these cells. The M20 epitope has been mapped to amino acids 353-367 on the alpha helical rod domain of Cytokeratin 8 (See Reference 10).
Formulation:	PBS State: Purified State: Liquid purified IgG fraction Preservative: 0.09% Sodium Azide
Concentration:	lot specific
Conjugation:	Unconjugated
Storage:	Store undiluted at 2-8°C for one month or (in aliquots) at -20°C for longer. Avoid repeated freeze-thaw cycles.
Stability:	Shelf life: One year from despatch.
Gene Name:	keratin 8



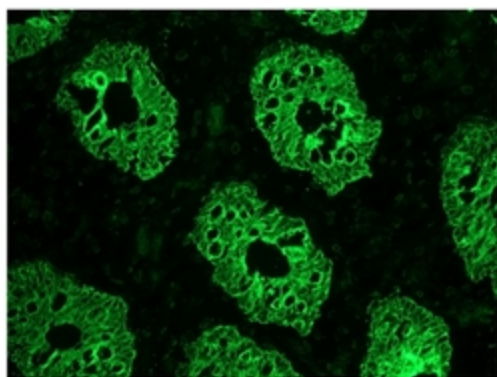
[View online »](#)

Database Link: [Entrez Gene 3856 Human P05787](#)

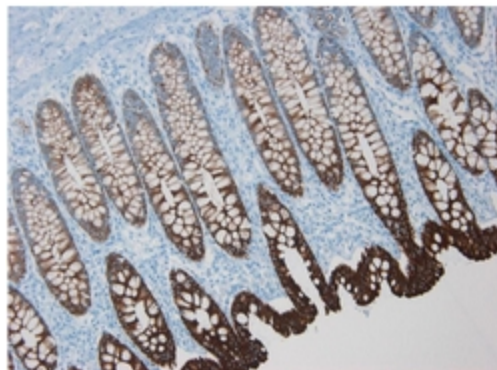
Background: Cytokeratins are a subfamily of intermediate filament proteins and are characterized by a remarkable biochemical diversity, represented in epithelial tissues by at least 20 different polypeptides. They range in molecular weight between 40 kDa and 68 kDa and isoelectric pH between 4.9-7.8. The individual cytokeratin polypeptides are numbered 1 to 20. The various epithelia in the human body usually express cytokeratins which are not only characteristic of the type of epithelium, but also related to the degree of maturation or differentiation within an epithelium. Cytokeratin subtype expression patterns are used to an increasing extent in the distinction of different types of epithelial malignancies. The cytokeratin antibodies are not only of assistance in the differential diagnosis of tumors using immunohistochemistry on tissue sections, but are also a useful tool in cytopathology and flow cytometric assays.

Synonyms: KRT8, CYK8, Cytokeratin-8, CK8, Keratin-8, K8, Cytokeratin endo A

Product images:



Immunohistochemistry on Frozen Section of Human colon



Immunohistochemistry on Paraffin Section of Human colon