

Product datasheet for **BM4008R**

Adgre1 Rat Monoclonal Antibody [Clone ID: Cl:A3-1]

Product data:

Product Type:	Primary Antibodies
Clone Name:	Cl:A3-1
Applications:	FC, IF
Recommended Dilution:	Flow Cytometry: Use 10 µl of neat antibody to label 10e6 cells in 100 µl. Immunofluorescence.
Reactivity:	Mouse
Host:	Rat
Isotype:	IgG2b
Clonality:	Monoclonal
Immunogen:	Thioglycollate stimulated peritoneal cavity macrophages from C57/BL mice.
Specificity:	This antibody recognises the F4/80 antigen. Clone Cl:A3-1 has been reported to modulate cytokine levels released in response to <i>Listeria monocytogenes</i> (5). We recommend the use of <i>Cat.-No</i> BM4008LE for this purpose.
Formulation:	PBS, pH 7.4 Label: PE State: Lyophilized purified Ig fraction Stabilizer: 1% BSA, 5% Sucrose Preservative: 0.09% Sodium Azide Label: R. Phycoerythrin (RPE)
Reconstitution Method:	Restore with 1 ml distilled water.
Purification:	Affinity Chromatography on Protein A
Conjugation:	PE
Storage:	Prior to reconstitution and following reconstitution store at 2-8°C. DO NOT FREEZE! This product is photosensitive and should be protected from light.
Stability:	Shelf life: one year from despatch.
Gene Name:	adhesion G protein-coupled receptor E1



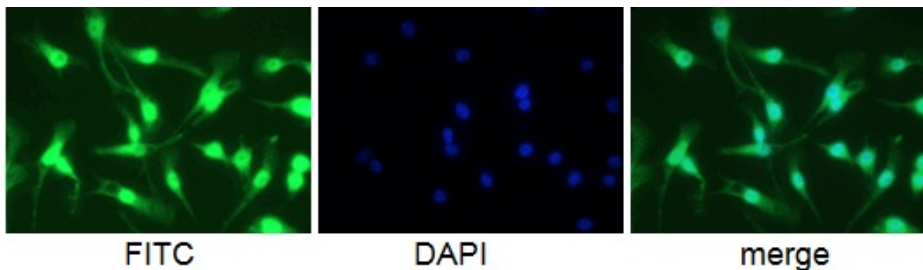
[View online »](#)

Database Link: [Entrez Gene 13733 Mouse Q61549](#)

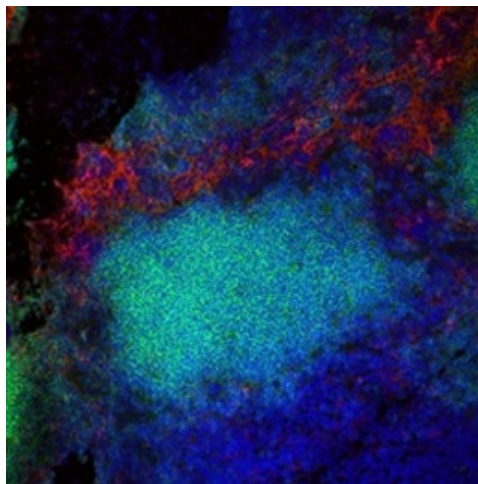
Background: Murine F4/80 antigen is a 160 kD cell surface glycoprotein that is a member of the EGF-TM7 family of proteins which shares 68% overall amino acid identity with Human EGF module-containing mucin-like hormone receptor 1 (EMR1). Expression of F4/80 is heterogeneous and is reported to vary during macrophage maturation and activation. The F4/80 antigen is expressed on a wide range of mature tissue macrophages including Kupffer cells, Langerhans, microglia, macrophages located in the gut lamina propria, peritoneal cavity, lung, thymus, bone marrow stroma and macrophages in the red pulp of the spleen. F4/80 expression has also been reported on a subpopulation of dendritic cells but is absent from macrophages located in T cell areas of the spleen and lymph node. The ligands and biological functions of the F4/80 antigen have not yet been determined but recent studies suggest a role for F4/80 in the generation of efferent CD8+ve regulatory T cells.

Synonyms: Emr1, Gpf480

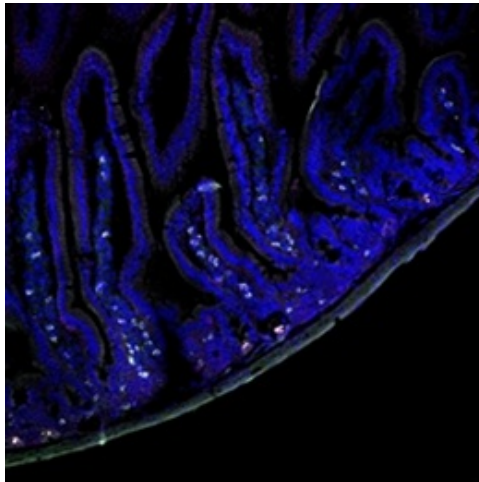
Product images:



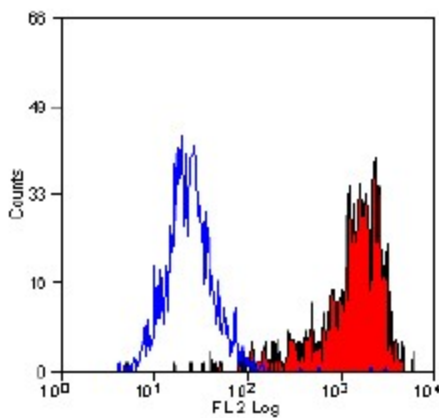
Mouse anti-Macrophage F4/80 antigen antibody Cat.-No [BM4008F] (5 µg/ml) on Raw 204.4 cells. Cells were fixed in 1% PFA, permeabilized in 0.25% Triton X 100 in PBS, blocked in 1% BSA in PBS.



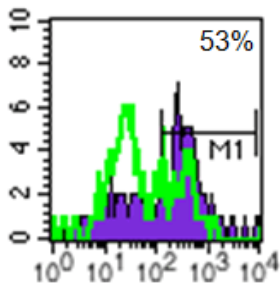
Immunofluorescence image of lymph node stained for macrophages (BM4008R), red and B cells CD79b, green; nuclei are stained with DAPI, blue



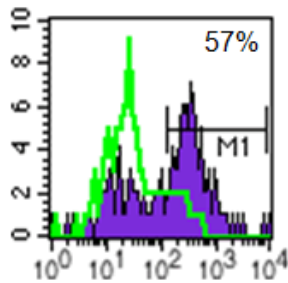
Immunofluorescence image of mouse small intestine stained with Rat anti Mouse F4/80 (BM4008R), red and Rat anti Mouse CD45, green; nuclei are stained with DAPI, blue. The image highlights macrophages within the lamina propria



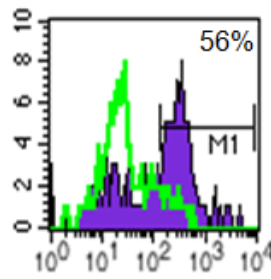
Flow Cytometry: Staining of Mouse J774 cells with RPE conjugated Rat Anti Mouse F4/80 Antigen (BM4008R).



2.5ug/ml
(0.25ug/10⁶ cells)

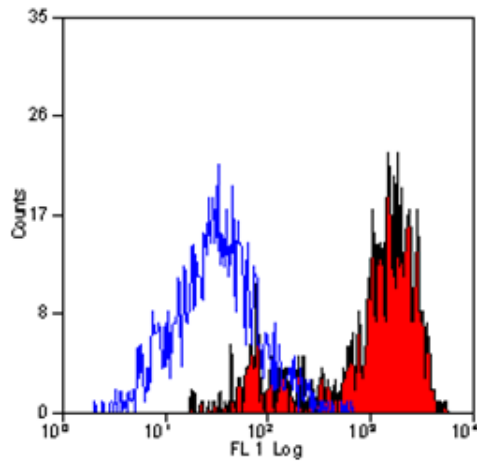


1.25ug/ml
(0.125ug/10⁶ cells)



0.625ug/ml
(0.0625ug/10⁶ cells)

Mouse anti-Macrophage F4/80 antigen antibody Cat.-No [BM4008F] on thioglycollate elicited mouse peritoneal macrophages. Purple: [BM4008F]; Green: Isotype control SM19FS; Percentages reflect % positive after subtraction of negative control, using M1 marker.



Staining of mouse peritoneal macrophages with Rat anti Mouse F4/80 antigen (BM4008R)