

Product datasheet for **BM4007RT**

Adgre1 Rat Monoclonal Antibody [Clone ID: BM8]

Product data:

Product Type:	Primary Antibodies
Clone Name:	BM8
Applications:	FC, IF, IHC, WB
Recommended Dilution:	Immunohistochemistry on Frozen Sections (Ref.1,4): Tissue embedded in OCT Tissue Tec; fixed with acetone for 10 min at RT; incubation with 0.02 M sodium azide in PBS containing 0.1 % H ₂ O ₂ for 10 min at RT to destroy endogenous peroxidase. Positive Control: spleen. Immunohistochemistry on Paraffin Sections (Rf.3): Fixation in 10% neutral buffered formalin for 24 h; blocking with non-immunized goat serum; microwaved for 6 min in citrate buffer. Positive Control: Splenic macrophages (Ref.3). Flow Cytometry (Ref.1,2): The recommended use of this reagent is 10 µl per 250.000 cells in a 100 µl total staining volume. The recommended use of this reagent is 10 µl per 250.000 cells in a 100 µl total staining volume. Western blot: Mouse bone-marrow derived macrophages; non-reduced; ~125 kDa (Ref.1); reduction with 2-mercaptoethanol destroys BM8 antigen. Positive Control: Mouse macrophages. Negative Control: Mouse fibroblasts or granulocytes.
Reactivity:	Mouse
Host:	Rat
Isotype:	IgG2a
Clonality:	Monoclonal
Specificity:	The monoclonal antibody BM8 recognizes a 125 kDa extracellular macrophage membrane molecule, highly restricted to mature macrophage subpopulations residing in tissue. It is the only macrophage marker that is able to distinguish non-destructive from destructive inflammation processes in the pancreas. Furthermore it is a unique histological marker of the progression from peri-insulinitis to beta-cell destruction and diabetes in a mouse diabetes model. It also detects Human heart macrophages. It does not detect Mouse granulocytes, Mouse mast cells, Mouse platelets, Mouse lymphocytes, Mouse fibroblasts, and Mouse endothelial cells.



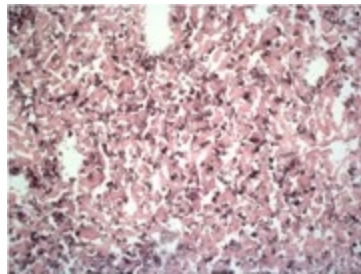
[View online »](#)

Formulation:	PBS Label: PE State: Liquid 0.2 µm filtered Ig fraction Stabilizer: 1% BSA Preservative: 0.02% Sodium Azide
Concentration:	lot specific
Purification:	Protein G Chromatography
Conjugation:	PE
Storage:	Store undiluted at 2-8°C.
Stability:	Shelf life: one year from despatch.
Gene Name:	adhesion G protein-coupled receptor E1
Database Link:	Entrez Gene 13733 Mouse Q61549

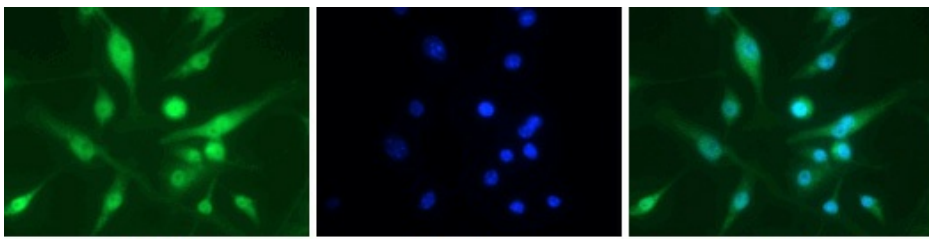
Background: This murine F4/80 glycoprotein contains seven-transmembrane (TM7) regions, which anchor the protein in the cell membrane, and thereby shows similarity in this region to G-protein-coupled receptors. The F4/80 molecule shares overall structural homology to other members of the epidermal growth factor (EGF)-TM7 family. The antigen is detected on tissue fixed macrophages in all organs tested so far (spleen, lymph nodes, thymus, liver, skin). It is also present on Langerhans cells in the skin and Kupffer cells in the liver. It is absent on granulocytes, lymphocytes and thrombocytes. The expression of F4/80 increases upon maturation of macrophage precursors in bone marrow and blood as well as in ontogeny.

Synonyms: Emr1, Gpf480

Product images:



F4/80 expression on macrophages in mouse liver. Staining of frozen tissue section with purified antibody BM8

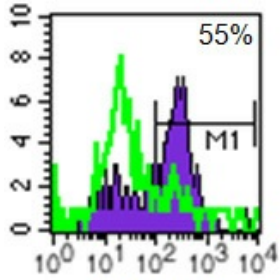


FITC

DAPI

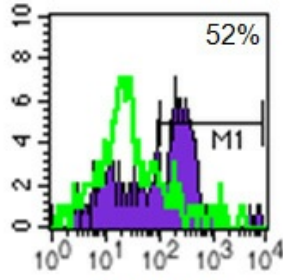
merge

Mouse anti-Macrophage F4/80 antigen antibody Cat.-No [BM4007F] (5 ug/ml) on Raw 204.4 cells. Cells were fixed in 1% PFA, permeabilized in 0.25%Triton X 100 in PBS, blocked in 1% BSA in PBS.



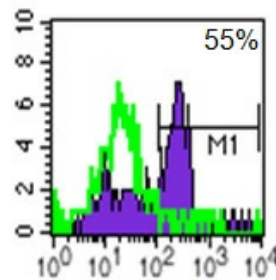
2.5ug/ml

(0.25ug/10⁶ cells)



1.25ug/ml

(0.125ug/10⁶ cells)



0.625ug/ml

(0.0625ug/10⁶ cells)

Mouse anti-Macrophage F4/80 antigen antibody Cat.-No [BM4007F] on thioglycollate elicited mouse peritoneal macrophages. Purple: [BM4007F]; Green: Isotype control SM15F; Percentages reflect % positive after subtraction of negative control, using M1 marker.