

## Product datasheet for **AR52078PU-N**

### CD18 / ITGB2 (23-700, His-tag) Human Protein

#### Product data:

Product Type:	Recombinant Proteins
Description:	CD18 / ITGB2 (23-700, His-tag) human protein, 0.25 mg
Species:	Human
Expression cDNA Clone or AA Sequence:	QECTKFKVSS CRECIESGPG CTWCQKLNFT GPGDPDSIRC DTRPQLLMRG CAADDIMDPT SLAETQEDHN GGQKQLSPQK VTLYLRPGQA AAFNVTFERRA KGYPIDLYYL MDLSYSMLDD LRNVKKLGGD LLRALNEITE SGRIGFGSFV DKTVLPFVNT HPDKLRNPCP NKEKECQPPF AFRHVLKLTN NSNQFQTEVG KQLISGNLDA PEGGLDAMMQ VAACPEEIGW RNVTRLLVFA TDDGFHFAGD GKLGAILTPN DGRCHLEDNL YKRSNEFDYP SVGQLAHKLA ENNIQPIFAV TSRMVKTYEK LTEIIPKSAV GELSESSNV VQLIKNAYNK LSSRVFLDHN ALPDTLKVTY DSFCSNGVTH RNQPRGDCDG VQINVPITFQ VKVTATECIQ EQSFVIRALG FTDIVTVQVL PQCECRCRDQ SRDRSLCHGK GFLECGICRC DTGYIGKNCE CQTQGRSSQE LEGSCRKDNN SIICSGLGDC VCGQCLCHTS DVPGKLIYGQ YCECDTINCE RYNGQVCGGP GRGLFCGK RCHPGFEGSA CQCERTTEGC LNPRRVECSG RGRRCNVCE CHSGYQLPLC QECPCGSPC GKYISCAECL KFEKGPFGKN CSAACPGLQL SNNPVKGRTC KERDSEGCWV AYTLQDGM DRYLIYVDES RECVAGPNLE HHHHHH
Tag:	His-tag
Predicted MW:	75.9 kDa
Concentration:	lot specific
Purity:	>85% by SDS - PAGE
Buffer:	Presentation State: Purified State: Liquid purified protein Buffer System: Phosphate Buffered Saline (pH 7.4) containing 10% glycerol.
Endotoxin:	< 1.0 EU per 1 microgram of protein (determined by LAL method)
Preparation:	Liquid purified protein
Storage:	Store undiluted at 2-8°C for one week or (in aliquots) at -20°C to -80°C for longer. Avoid repeated freezing and thawing.
Stability:	Shelf life: one year from despatch.
RefSeq:	<a href="#">NP_000202</a>
Locus ID:	3689



[View online »](#)

UniProt ID: [P05107](#), [A0A494C0X7](#)

Cytogenetics: 21q22.3

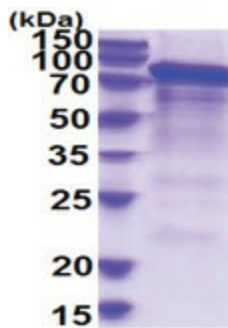
Synonyms: CD18; LAD; LCAMB; LFA-1; MAC-1; MF17; MFI7

Summary: This gene encodes an integrin beta chain, which combines with multiple different alpha chains to form different integrin heterodimers. Integrins are integral cell-surface proteins that participate in cell adhesion as well as cell-surface mediated signalling. The encoded protein plays an important role in immune response and defects in this gene cause leukocyte adhesion deficiency. Alternative splicing results in multiple transcript variants. [provided by RefSeq, Dec 2014]

Protein Families: Druggable Genome, Transmembrane

Protein Pathways: Cell adhesion molecules (CAMs), Leukocyte transendothelial migration, Natural killer cell mediated cytotoxicity, Regulation of actin cytoskeleton, Viral myocarditis

### Product images:



15% SDS-PAGE (3ug)