

Product datasheet for **AR51522PU-N**

TARBP2 (1-345,) Human Protein

Product data:

Product Type:	Recombinant Proteins
Description:	TARBP2 (1-345,) human recombinant protein, 0.5 mg
Species:	Human
Expression Host:	E. coli
Expression cDNA Clone or AA Sequence:	MLAANPGKTP ISLLQEYGTR IGKTPVYDLL KAEGQAHQPN FFRVTVGDT SCTGQGPSKK AAKHKAAEVA LKHLKGGSMLEPALEDSSSF SPLDSSLPED IPVFTAAAAA TPVPSVVLTR SPPMELQPPV SPQQSECNPV GALQELVVQK GWRLPEYTVT QESGPAHRKE FTMTCRVERF IEIGSGTSKK LAKRNAAAKM LLRVHTVPLD ARDGNEVEPD DDHFSIGVGS RLDGLRNRGP GCTWDSLRLNS VGEKILSLRS CSLGSLGALG PACCRVLSLSEL SEEQAFHVS YLDIEELSLSG LCQCLVELST QPATVCHGSA TTREAARGE AARRALQYLKI MAGSK
Predicted MW:	36.9 kDa
Concentration:	lot specific
Purity:	>85% by SDS - PAGE
Buffer:	Presentation State: Purified State: Liquid purified protein Buffer System: 20 mM Tris-HCl buffer (pH 8.0) containing 10% glycerol 0.4M Urea
Preparation:	Liquid purified protein
Protein Description:	Recombinant human TARBP2 protein was expressed in E.coli.
Storage:	Store undiluted at 2-8°C for one week or (in aliquots) at -20°C to -80°C for longer. Avoid repeated freezing and thawing.
Stability:	Shelf life: one year from despatch.
RefSeq:	NP_004169
Locus ID:	6895
UniProt ID:	Q15633
Cytogenetics:	12q13.13
Synonyms:	LOQS; TRBP; TRBP1; TRBP2



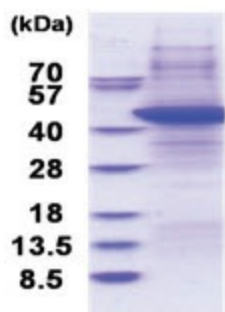
[View online »](#)

Summary:

HIV-1, the causative agent of acquired immunodeficiency syndrome (AIDS), contains an RNA genome that produces a chromosomally integrated DNA during the replicative cycle. Activation of HIV-1 gene expression by the transactivator Tat is dependent on an RNA regulatory element (TAR) located downstream of the transcription initiation site. The protein encoded by this gene binds between the bulge and the loop of the HIV-1 TAR RNA regulatory element and activates HIV-1 gene expression in synergy with the viral Tat protein. Alternative splicing results in multiple transcript variants encoding different isoforms. This gene also has a pseudogene. [provided by RefSeq, Jul 2008]

Protein Families:

Stem cell - Pluripotency

Product images:

15% SDS-PAGE (3ug)