

Product datasheet for **AR50905PU-S**

RHOQ / TC10 (1-202, His-tag) Human Protein

Product data:

Product Type:	Recombinant Proteins
Description:	RHOQ / TC10 (1-202, His-tag) human recombinant protein, 50 µg
Species:	Human
Expression Host:	E. coli
Expression cDNA Clone or AA Sequence:	MGSSHHHHHH SSGLVPRGSH MGSMAGPGA LMLKCVVGD GAVGKTCLLM SYANDAFPEE YVPTVFDHYA VSVTVGGKQY LLGLYDTAGQ EDYDRLRPLS YPMTDVFLIC FSVVNPASFQ NVKEEWPEL KEYAPNVPFL LIGTQIDLRD DPKTLARLND MKEKPICVEQ GQKLAKEIGA CCYVECSALT QKGLKTVFDE AIIAILTPKK HTVKKRIGSR CINCC
Tag:	His-tag
Predicted MW:	24.7 kDa
Concentration:	lot specific
Purity:	>85% by SDS - PAGE
Buffer:	Presentation State: Purified State: Liquid purified protein Buffer System: 20 mM Tris-HCl buffer (pH 8.0) containing 10% glycerol, 1 mM DTT
Preparation:	Liquid purified protein
Protein Description:	Recombinant human RhoQ protein, fused to His-tag at N-terminus, was expressed in E.coli and purified by using conventional chromatography.
Storage:	Store undiluted at 2-8°C for one week or (in aliquots) at -20°C to -80°C for longer. Avoid repeated freezing and thawing.
Stability:	Shelf life: one year from despatch.
RefSeq:	NP_036381
Locus ID:	23433
UniProt ID:	P17081 , V9HWD0
Cytogenetics:	2p21
Synonyms:	ARHQ; HEL-S-42; RASL7A; TC10; TC10A



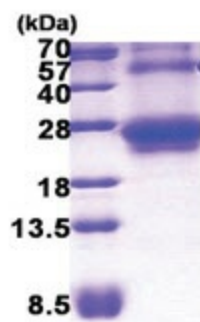
[View online »](#)

Summary:

This gene encodes a member of the Rho family of small GTPases, which cycle between inactive GDP-bound and active GTP-bound states and function as molecular switches in signal transduction cascades. Rho proteins promote reorganization of the actin cytoskeleton and regulate cell shape, attachment, and motility. The encoded protein is an important signalling protein for sarcomere assembly and has been shown to play a significant role in the exocytosis of the solute carrier family 2, facilitated glucose transporter member 4 and other proteins, possibly acting as the signal that turns on the membrane fusion machinery. Three related pseudogene have been identified on chromosomes 2 and 14. [provided by RefSeq, Aug 2011]

Protein Pathways:

Insulin signaling pathway

Product images:

15% SDS-PAGE (3ug)