

## Product datasheet for **AR50771PU-S**

### MAVS (1-513, His-tag) Human Protein

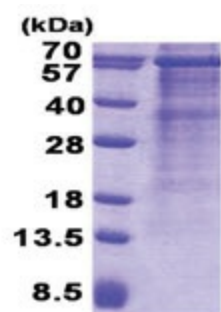
#### Product data:

Product Type:	Recombinant Proteins
Description:	MAVS (1-513, His-tag) human recombinant protein, 10 µg
Species:	Human
Expression Host:	E. coli
Expression cDNA Clone or AA Sequence:	MGSSHHHHHH SSGLVPRGSH MGSMPFAEDK TYKYICRNFS NFCNVDWEI LPYLPCLTAR DQDRLRATCT LSGNRDTLWH LFNTLQRRPG WVEYFIAALR GCELVDLADE VASVYQSYQP RTSDRPPDPL EPPSLPAERP GPPTAAAHS IPYNCREKE PSYPMPVQET QAPESPGENS EQALQTLSPR AIPRNPDGGP LESSDLAAL SPLTSSGHQE QDTELGSTHT AGATSSLTPS RGPVSPSVSF QPLARSTPRA SRLPGPTGSV VSTGTSFSS SPGLASAGAA EGKQGAESDQ AEPIICSSGA EAPANSLPSK VPTTLMPVNT VALKVPANPA SVSTVPSKLP TSSKPPGAVP SNALTNPAPS KLPINSTRAG MVPSKVPTSM VLTKVSASTV PTDGSSRNEE TPAAPTAGA TGGSSAWLDS SSENRLGSE LSKPGVLASQ VDSPFSGCFE DLAISASTSL GMGPCHGPEE NEYKSEGTFG IHVAENPSIQ LLEGNGPPA DPDGGPRPQA DRKFQEREVP CHRPS
Tag:	His-tag
Predicted MW:	55.9 kDa
Concentration:	lot specific
Purity:	>85% by SDS - PAGE
Buffer:	Presentation State: Purified State: Liquid purified protein Buffer System: 20 mM Tris-HCl buffer (pH 8.0) containing 0.15M NaCl, 10% glycerol, 1 mM DTT
Preparation:	Liquid purified protein
Protein Description:	Recombinant human MAVS protein, fused to His-tag at N-terminus, was expressed in E.coli and purified by using conventional chromatography techniques.
Storage:	Store undiluted at 2-8°C for one week or (in aliquots) at -20°C to -80°C for longer. Avoid repeated freezing and thawing.
Stability:	Shelf life: one year from despatch.
RefSeq:	<a href="#">NP_001193420</a>
Locus ID:	57506



[View online »](#)

UniProt ID:	<a href="#">Q7Z434</a>
Cytogenetics:	20p13
Synonyms:	CARDIF; IPS-1; IPS1; VISA
Summary:	This gene encodes an intermediary protein necessary in the virus-triggered beta interferon signaling pathways. It is required for activation of transcription factors which regulate expression of beta interferon and contributes to antiviral innate immunity. [provided by RefSeq, Jul 2020]
Protein Families:	Transmembrane
Protein Pathways:	Cytosolic DNA-sensing pathway, RIG-I-like receptor signaling pathway

**Product images:**

15% SDS-PAGE (3ug)