

Product datasheet for **AR50699PU-N**

TIMD3 / HAVCR2 (22-202, His-tag) Human Protein

Product data:

Product Type:	Recombinant Proteins
Description:	TIMD3 / HAVCR2 (22-202, His-tag) human recombinant protein, 0.5 mg
Species:	Human
Expression Host:	E. coli
Expression cDNA Clone or AA Sequence:	MGSSHHHHHH SSGLVPRGSH MGS HMSEVEY RAEVGQNAYL PCFYTPAAPG NLVPVCWGKG ACPVFECGNV VLRTDERDVN YWTSRYWLNG DFRKGDVSLT IENVTLADSG IYCCRIQIPG IMNDEKFNLK LVIKPAKVTP APTLQRDFTA AFPRMLTTRG HGPAETQTLG SLPDINLTQI STLANELRDS RLANDLRDSG ATIRIG
Tag:	His-tag
Predicted MW:	22.7 kDa
Concentration:	lot specific
Purity:	>90% by SDS - PAGE
Buffer:	Presentation State: Purified State: Liquid purified protein Buffer System: 20 mM Tris-HCl buffer (pH 8.0) containing 0.4M urea, 10% glycerol
Preparation:	Liquid purified protein
Protein Description:	Recombinant human HAVCR2 protein, fused to His-tag at N-terminus, was expressed in E.coli.
Storage:	Store undiluted at 2-8°C for one week or (in aliquots) at -20°C to -80°C for longer. Avoid repeated freezing and thawing.
Stability:	Shelf life: one year from despatch.
RefSeq:	NP_116171
Locus ID:	84868
UniProt ID:	Q8TDQ0
Cytogenetics:	5q33.3
Synonyms:	CD366; HAVcr-2; KIM-3; SPTCL; Tim-3; TIM3; TIMD-3; TIMD3



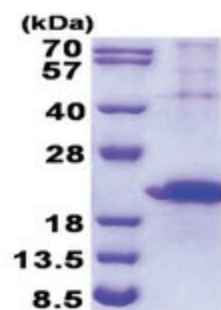
[View online »](#)

Summary:

The protein encoded by this gene belongs to the immunoglobulin superfamily, and TIM family of proteins. CD4-positive T helper lymphocytes can be divided into types 1 (Th1) and 2 (Th2) on the basis of their cytokine secretion patterns. Th1 cells are involved in cell-mediated immunity to intracellular pathogens and delayed-type hypersensitivity reactions, whereas, Th2 cells are involved in the control of extracellular helminthic infections and the promotion of atopic and allergic diseases. This protein is a Th1-specific cell surface protein that regulates macrophage activation, and inhibits Th1-mediated auto- and alloimmune responses, and promotes immunological tolerance. [provided by RefSeq, Sep 2011]

Protein Families:

Druggable Genome, Transmembrane

Product images:

15% SDS-PAGE (3ug)