

## Product datasheet for **AR50688PU-N**

### ESM1 (20-184, His-tag) Human Protein

#### Product data:

Product Type:	Recombinant Proteins
Description:	ESM1 (20-184, His-tag) human protein, 0.5 mg
Species:	Human
Expression Host:	E. coli
Expression cDNA Clone or AA Sequence:	MGSSHHHHHH SSGLVPRGSH MGSWSNNYAV DCPQHCDSS E CKSSPRCKRT VLDDCGCCRV CAAGRGETCY RTVSGMDGMK CGPGLRCQPS NGEDPFGEEF GICKDCPYGT FGMDCRETCN CQSGICDRGT GKCLKFPFFQ YSVTKSSNRF VSLTEHDMAS GDGNIVREEV VKENAAGSPV MRKWLNPR
Tag:	His-tag
Predicted MW:	20.5 kDa
Concentration:	lot specific
Purity:	>90% by SDS - PAGE
Buffer:	Presentation State: Purified State: Liquid purified protein Buffer System: 20 mM Tris-HCl buffer (pH 8.0) containing 2M Urea, 10% glycerol
Preparation:	Liquid purified protein
Storage:	Store undiluted at 2-8°C for one week or (in aliquots) at -20°C to -80°C for longer. Avoid repeated freezing and thawing.
Stability:	Shelf life: one year from despatch.
RefSeq:	<a href="#">NP_001129076</a>
Locus ID:	11082
UniProt ID:	<a href="#">Q9NQ30</a>
Cytogenetics:	5q11.2
Synonyms:	endocan



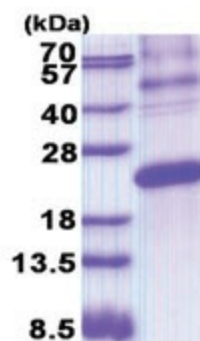
[View online »](#)

**Summary:**

This gene encodes a secreted protein which is mainly expressed in the endothelial cells in human lung and kidney tissues. The expression of this gene is regulated by cytokines, suggesting that it may play a role in endothelium-dependent pathological disorders. The transcript contains multiple polyadenylation and mRNA instability signals. Two transcript variants encoding different isoforms have been found for this gene. [provided by RefSeq, Oct 2008]

**Protein Families:**

Druggable Genome, Secreted Protein

**Product images:**

15% SDS-PAGE (3ug)