

Product datasheet for **AR50644PU-N**

RAET1E (31-225, His-tag) Human Protein

Product data:

Product Type:	Recombinant Proteins
Description:	RAET1E (31-225, His-tag) human recombinant protein, 0.5 mg
Species:	Human
Expression Host:	E. coli
Expression cDNA Clone or AA Sequence:	<u>MGSSHHHHHH</u> <u>SSGLVPRGSH</u> <u>MGSMHSLCFN</u> FTIKSLSRPG QPWCEAQVFL NKNLFLQYNS DNNMVKPLGL LGKKVYATST WGELTQTLGE VGRDLRMLLC DIKPQIKTSD PSTLQVEMFC QREAERCTGA SWQFATNGEK SLLFDAMNMT WTVINHEASK IKETWKKDRG LEKYFRKLSK GDCDHWLREF LGHWPEAMPEP TVSPVNASDI HWSSSSLPD
Tag:	His-tag
Predicted MW:	24.9 kDa
Concentration:	lot specific
Purity:	>90% by SDS - PAGE
Buffer:	Presentation State: Purified State: Liquid purified protein Buffer System: 20 mM Tris-HCl buffer (pH 8.0) containing 0.4M UREA, 10% glycerol
Preparation:	Liquid purified protein
Protein Description:	Recombinant human RAET1E protein, fused to His-tag at N-terminus, was expressed in E.coli.
Storage:	Store undiluted at 2-8°C for one week or (in aliquots) at -20°C to -80°C for longer. Avoid repeated freezing and thawing.
Stability:	Shelf life: one year from despatch.
RefSeq:	<u>NP_001230254</u>
Locus ID:	135250
UniProt ID:	<u>Q8TD07</u>
Cytogenetics:	6q25.1
Synonyms:	bA350J20.7; LETAL; N2DL-4; NKG2DL4; RAET1E2; RL-4; ULBP4



[View online »](#)

Summary:

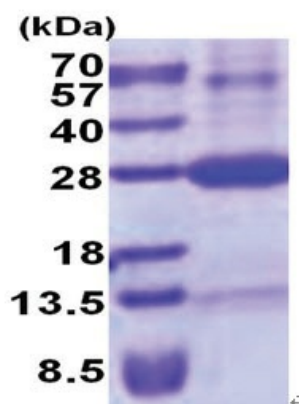
This gene belongs to the RAET1 family, which consists of major histocompatibility complex (MHC) class I-related genes located in a cluster on chromosome 6q24.2-q25.3. This and RAET1G protein differ from other RAET1 proteins in that they have type I membrane-spanning sequences at their C termini rather than glycosylphosphatidylinositol anchor sequences. This protein functions as a ligand for NKG2D receptor, which is expressed on the surface of several types of immune cells, and is involved in innate and adaptive immune responses. Alternatively spliced transcript variants encoding different isoforms have been found for this gene. [provided by RefSeq, Aug 2011]

Protein Families:

Druggable Genome, Transmembrane

Protein Pathways:

Natural killer cell mediated cytotoxicity

Product images:

15% SDS-PAGE (3ug).