

## Product datasheet for **AR09952PU-N**

### **MIP5 / CCL15 (22-113) Human Protein**

#### **Product data:**

<b>Product Type:</b>	Recombinant Proteins
<b>Description:</b>	MIP5 / CCL15 (22-113) human recombinant protein, 0.1 mg
<b>Species:</b>	Human
<b>Expression Host:</b>	E. coli
<b>Expression cDNA Clone or AA Sequence:</b>	MQFINDAETE LMMSKLPLEN PVLNSFHFA ADCCTSYSISQ SIPCSLMKSY FETSSECKP GVIFLTKKGR QVCAKPSGPG VQDCMKLKP YSI
<b>Predicted MW:</b>	10.3 kDa
<b>Concentration:</b>	lot specific
<b>Purity:</b>	>95%
<b>Buffer:</b>	Presentation State: Purified State: Liquid purified peptide Buffer System: PBS, pH 7.4, 10% glycerol
<b>Endotoxin:</b>	< 1.0 EU per 1 ug of protein (determined by LAL method)
<b>Preparation:</b>	Liquid purified peptide
<b>Protein Description:</b>	Recombinant human CCL15 was expressed in E.coli and purified by using conventional chromatography techniques.
<b>Storage:</b>	Store undiluted at 2-8°C for up to two weeks or (in aliquots) at -20°C or -70°C for longer. Avoid repeated freezing and thawing.
<b>Stability:</b>	Shelf life: one year from despatch.
<b>RefSeq:</b>	<a href="#">NP_116741</a>
<b>Locus ID:</b>	6359
<b>UniProt ID:</b>	<a href="#">Q16663</a> , <a href="#">A0A0B4J2E2</a>
<b>Cytogenetics:</b>	17q12
<b>Synonyms:</b>	HCC-2; HMRP-2B; LKN-1; LKN1; MIP-1 delta; MIP-1D; MIP-5; MRP-2B; NCC-3; NCC3; SCYA15; SCYL3; SY15



[View online »](#)

**Summary:**

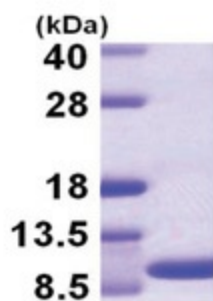
This gene is located in a cluster of similar genes in the same region of chromosome 17. These genes encode CC cytokines, which are secreted proteins characterized by two adjacent cysteines. The product of this gene is chemotactic for T cells and monocytes, and acts through C-C chemokine receptor type 1 (CCR1). The proprotein is further processed into numerous smaller functional peptides. Naturally-occurring readthrough transcripts occur from this gene into the downstream gene, CCL14 (chemokine (C-C motif) ligand 14). [provided by RefSeq, Jan 2013]

**Protein Families:**

Druggable Genome, Secreted Protein, Transmembrane

**Protein Pathways:**

Chemokine signaling pathway, Cytokine-cytokine receptor interaction

**Product images:**

15% SDS-PAGE (3ug)