

## Product datasheet for **AR09783PU-L**

### RAC3 (1-189) Human Protein

#### Product data:

Product Type:	Recombinant Proteins
Description:	RAC3 (1-189) human recombinant protein, 0.5 mg
Species:	Human
Expression Host:	E. coli
Expression cDNA Clone or AA Sequence:	MQAIKCVVVG DGAVGKTCLL ISYTTNAFPG EYIPTVFDNY SANVMVDGKP VNLGLWDTAG QEDYDRLRPL SYPQTDVFLI CFSLVSPASF ENVRAKWYPE VRHHCPTPI LLVGTKLCLR DDKDTIERLR DKKLAPITYP QGLAMAREIG SVKYLECSAL TQRGLKTVFD EAIRAVLCPV PVKKPGKKC
Predicted MW:	21 kDa
Concentration:	lot specific
Purity:	>95%
Buffer:	Presentation State: Purified State: Liquid purified protein Buffer System: 20 mM Tris-HCl buffer (pH 8.0) containing 10% glycerol, 2 mM DTT, 200 mM NaCl, 0.1 mM PMSF, 1 mM EDTA
Preparation:	Liquid purified protein
Protein Description:	Recombinant human RAC3 protein was expressed in E.coli and purified by using conventional chromatography techniques.
Storage:	Store undiluted at 2-8°C for up to two weeks or (in aliquots) at -20°C or -70°C for longer. Avoid repeated freezing and thawing.
Stability:	Shelf life: one year from despatch.
RefSeq:	<a href="#">NP_001303236</a>
Locus ID:	5881
Cytogenetics:	17q25.3
Summary:	The protein encoded by this gene is a GTPase which belongs to the RAS superfamily of small GTP-binding proteins. Members of this superfamily appear to regulate a diverse array of cellular events, including the control of cell growth, cytoskeletal reorganization, and the activation of protein kinases. Alternative splicing results in multiple transcript variants. [provided by RefSeq, Oct 2015]

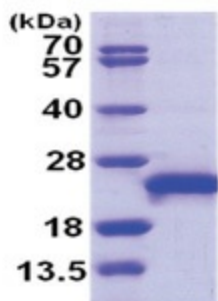


[View online »](#)

**Protein Families:** Druggable Genome

**Protein Pathways:** Adherens junction, Axon guidance, B cell receptor signaling pathway, Colorectal cancer, Fc epsilon RI signaling pathway, Focal adhesion, MAPK signaling pathway, Natural killer cell mediated cytotoxicity, Pancreatic cancer, Pathways in cancer, Regulation of actin cytoskeleton, VEGF signaling pathway, Viral myocarditis, Wnt signaling pathway

**Product images:**



15% SDS-PAGE (3ug)