

Product datasheet for **AR09779PU-N**

RALB (1-203, His-tag) Human Protein

Product data:

Product Type:	Recombinant Proteins
Description:	RALB (1-203, His-tag) human recombinant protein, 50 µg
Species:	Human
Expression Host:	E. coli
Expression cDNA Clone or AA Sequence:	<u>MGSSHHHHHH</u> <u>SSGLVPRGSH</u> <u>MGSHMAANKS</u> KGQSSLALHK VIMVGSGGVG KSALT LQFM Y DEFVEDYEPT KADSYRKKVV LDGEEVQIDI LDTAGQEDYA AIRDNYFRSG EGFLLVFSIT EHESFTATAE FREQILRVKA EEDKIPLL VV GNKSDLEERR QVPVEEARSK AEEWGVQYVE TSAKTRANVD KVFFDLMRI RTKKMSENKD KNGKKSSKNK KSFKERC
Tag:	His-tag
Predicted MW:	25.6 kDa
Concentration:	lot specific
Purity:	>90%
Buffer:	Presentation State: Purified State: Liquid purified protein Buffer System: 20 mM Tris-HCl buffer (pH 8.0) containing 10% glycerol, 0.1M NaCl, 1 mM DTT
Preparation:	Liquid purified protein
Protein Description:	Recombinant human RALB protein, fused to His-tag at N-terminus, was expressed in E.coli and purified by using conventional chromatography.
Storage:	Store undiluted at 2-8°C for up to two weeks or (in aliquots) at -20°C or -70°C for longer. Avoid repeated freezing and thawing.
Stability:	Shelf life: one year from despatch.
RefSeq:	<u>NP_002872</u>
Locus ID:	5899
UniProt ID:	<u>P11234</u> , <u>A0A024RAG3</u>
Cytogenetics:	2q14.2
Summary:	This gene encodes a GTP-binding protein that belongs to the small GTPase superfamily and Ras family of proteins. GTP-binding proteins mediate the transmembrane signaling initiated by the occupancy of certain cell surface receptors. [provided by RefSeq, Jul 2008]

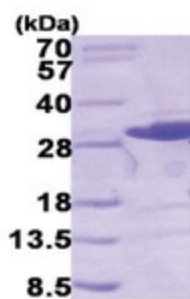


[View online »](#)

Protein Families: Druggable Genome

Protein Pathways: Pancreatic cancer, Pathways in cancer

Product images:



15% SDS-PAGE (3ug)