

## Product datasheet for **AR09762PU-N**

### **RALA / RAL (1-203, His-tag) Human Protein**

#### **Product data:**

<b>Product Type:</b>	Recombinant Proteins
<b>Description:</b>	RALA / RAL (1-203, His-tag) human recombinant protein, 0.1 mg
<b>Species:</b>	Human
<b>Expression Host:</b>	E. coli
<b>Expression cDNA Clone or AA Sequence:</b>	<u>MGSSHHHHHH SSSLVPRGSH MGS</u> HMAANKP KGQNSLALHK VIMVGSGGVG KSALTLQFMY DEFVEDYEPT KADSYRKKVV LDGEEVQIDI LDTAGQEDYA AIRDNYFRSG EGFLCVFSIT EMESFAATAD FREQILRVKE DENVPFLLVG NKSDLEDKRQ VSVEEAKNRA EQWNVNYVET SAKTRANVVK VFFDLMREIR ARKMEDSKEK NGKKKRKSLA KRIRERC
<b>Tag:</b>	His-tag
<b>Predicted MW:</b>	25.8 kDa
<b>Concentration:</b>	lot specific
<b>Purity:</b>	>90%
<b>Buffer:</b>	Presentation State: Purified State: Liquid purified protein Buffer System: 20 mM Tris-HCl buffer (pH 8.0) containing 10% glycerol, 2 mM DTT, 100 mM NaCl, 0.1 mM PMSF
<b>Preparation:</b>	Liquid purified protein
<b>Protein Description:</b>	Recombinant human RALA protein, fused to His-tag at N-terminus, was expressed in E.coli and purified by using conventional chromatography techniques.
<b>Storage:</b>	Store undiluted at 2-8°C for up to two weeks or (in aliquots) at -20°C or -70°C for longer. Avoid repeated freezing and thawing.
<b>Stability:</b>	Shelf life: one year from despatch.
<b>RefSeq:</b>	<u>NP_005393</u>
<b>Locus ID:</b>	5898
<b>UniProt ID:</b>	<u>P11233</u>
<b>Cytogenetics:</b>	7p14.1
<b>Synonyms:</b>	HINCONS; RAL



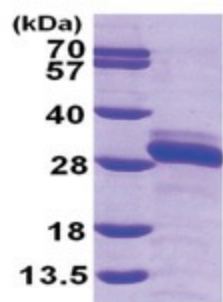
[View online »](#)

**Summary:** The product of this gene belongs to the small GTPase superfamily, Ras family of proteins. GTP-binding proteins mediate the transmembrane signaling initiated by the occupancy of certain cell surface receptors. This gene encodes a low molecular mass ras-like GTP-binding protein that shares about 50% similarity with other ras proteins. [provided by RefSeq, Jul 2008]

**Protein Families:** Druggable Genome

**Protein Pathways:** Pancreatic cancer, Pathways in cancer

**Product images:**



15% SDS-PAGE (3ug)