

Product datasheet for **AR09706PU-N**

Monoglyceride lipase (1-313, His-tag) Human Protein

Product data:

Product Type:	Recombinant Proteins
Description:	Monoglyceride lipase (1-313, His-tag) human recombinant protein, 50 µg
Species:	Human
Expression Host:	E. coli
Expression cDNA Clone or AA Sequence:	<u>MGSSHHHHHH SSGLVPRGSH</u> METGPEDPSS MPEESSPRRT PQSIPYQDLP HLVNADGQYL FCRYWKPTGT PKALIFVSHG AGEHSGRYEE LARMLMGLDL LVFAHDHVGH GQSEGERMVV SDFHVFVRDV LQHVDSMQKD YPGLPVFLLG HSMGGAAIL TAAERPGHFA GMVLISPLVL ANPESATTFK VLA AKVLNLV LPNLSLGPID SSVLSRNKTE VDIYNSDPLI CRAGLKVCFG IQLLNAVSRV ERALPKLTVP FLLQGSADR LCDSKGAYLL MELAKSQDKT LKIYEGAYHV LHKELPEVTN SVFHEINMWV SQRTATAGTA SPP
Tag:	His-tag
Predicted MW:	36.4 kDa
Concentration:	lot specific
Purity:	>85%
Buffer:	Presentation State: Purified State: Liquid purified protein Buffer System: 20 mM Tris-HCl Buffer (pH 8.0) containing 10% Glycerol
Preparation:	Liquid purified protein
Protein Description:	Recombinant human MGLL protein, fused to His-tag at N-terminus, was expressed in E.coli and purified by using conventional chromatography.
Storage:	Store undiluted at 2-8°C for up to two weeks or (in aliquots) at -20°C or -70°C for longer. Avoid repeated freezing and thawing.
Stability:	Shelf life: one year from despatch.
RefSeq:	<u>NP_001003794</u>
Locus ID:	11343
UniProt ID:	<u>Q99685</u>
Cytogenetics:	3q21.3
Synonyms:	HU-K5; HUK5; MAGL; MGL



[View online »](#)

Summary:

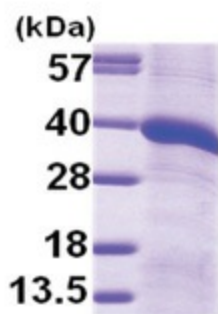
This gene encodes a serine hydrolase of the AB hydrolase superfamily that catalyzes the conversion of monoacylglycerides to free fatty acids and glycerol. The encoded protein plays a critical role in several physiological processes including pain and nociperception through hydrolysis of the endocannabinoid 2-arachidonoylglycerol. Expression of this gene may play a role in cancer tumorigenesis and metastasis. Alternatively spliced transcript variants encoding multiple isoforms have been observed for this gene. [provided by RefSeq, Feb 2012]

Protein Families:

Druggable Genome, Protease

Protein Pathways:

Glycerolipid metabolism, Metabolic pathways

Product images:

15% SDS-PAGE (3ug)