

## Product datasheet for **AP55808PU-S**

### CDC25C pSer198 Rabbit Polyclonal Antibody

#### Product data:

Product Type:	Primary Antibodies
Applications:	IHC
Recommended Dilution:	<b>Immunohistochemistry on paraffin sections:</b> 1:50~1:100.
Reactivity:	Human
Host:	Rabbit
Clonality:	Polyclonal
Immunogen:	Peptide sequence around phosphorylation site of Serine 198(E-F-S(p)-L-K) derived from Human CDC25C (KLH-conjugated)
Specificity:	The antibody detects endogenous levels of CDC25C only when phosphorylated at serine 198.
Formulation:	Rabbit IgG in phosphate buffered saline (without Mg <sup>2+</sup> and Ca <sup>2+</sup> ), pH 7.4, 150mM NaCl, 0.02% sodium azide and 50% glycerol State: Aff - Purified State: Liquid Ig fraction
Concentration:	lot specific
Purification:	Affinity chromatography using epitope-specific peptide
Conjugation:	Unconjugated
Storage:	Upon receipt, store undiluted (in aliquots) at -20°C. Avoid repeated freezing and thawing.
Stability:	Shelf life: one year from despatch.
Predicted Protein Size:	53 kDa
Gene Name:	cell division cycle 25C
Database Link:	<a href="#">Entrez Gene 995 Human P30307</a>



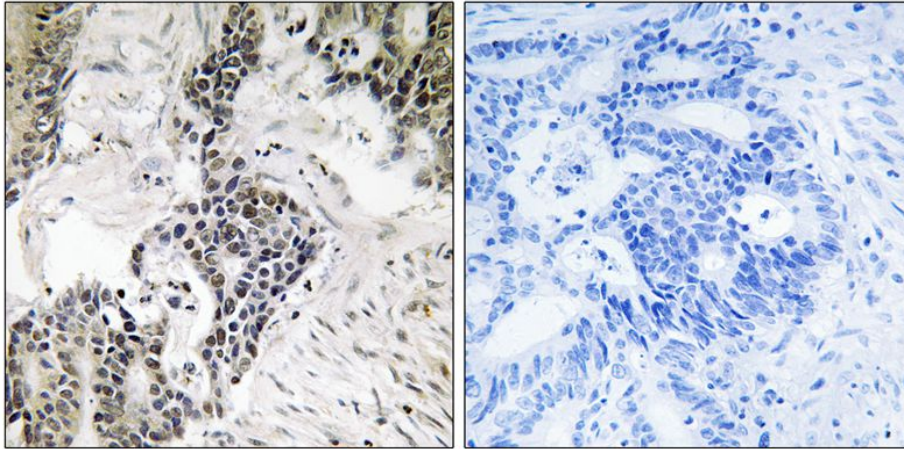
[View online »](#)

**Background:**

cdc25C is highly conserved during evolution and it plays a key role in the regulation of cell division. The encoded protein is a tyrosine phosphatase and belongs to the Cdc25 phosphatase family. It directs dephosphorylation of cyclin B-bound CDC2 and triggers entry into mitosis. It is also thought to suppress p53-induced growth arrest. Multiple alternatively spliced transcript variants of this gene have been described, however, the full-length nature of many of them is not known.

**Synonyms:**

CDC25

**Product images:**

Immunohistochemical analysis of paraffin-embedded human colon carcinoma tissue using CDC25C (Phospho-Ser198) Antibody (left) or the same antibody preincubated with blocking peptide (right).