

Product datasheet for **AP55782PU-N**

Topoisomerase II alpha (TOP2A) pThr1343 Rabbit Polyclonal Antibody

Product data:

Product Type:	Primary Antibodies
Applications:	WB
Recommended Dilution:	Western blot: 1:500~1:1000.
Reactivity:	Human
Host:	Rabbit
Clonality:	Polyclonal
Immunogen:	Peptide sequence around phosphorylation site of threonine1343(E-K-T(p)-D-D) derived from Human TOP2A (KLH-conjugated)
Specificity:	The antibody detects endogenous levels of TOP2A only when phosphorylated at threonine 1343.
Formulation:	Rabbit IgG in phosphate buffered saline (without Mg ²⁺ and Ca ²⁺), pH 7.4, 150mM NaCl, 0.02% sodium azide and 50% glycerol State: Aff - Purified State: Liquid Ig fraction
Concentration:	lot specific
Purification:	Affinity chromatography using epitope-specific peptide
Conjugation:	Unconjugated
Storage:	Upon receipt, store undiluted (in aliquots) at -20°C. Avoid repeated freezing and thawing.
Stability:	Shelf life: one year from despatch.
Predicted Protein Size:	190 kDa
Gene Name:	topoisomerase (DNA) II alpha
Database Link:	Entrez Gene 7153 Human P11388



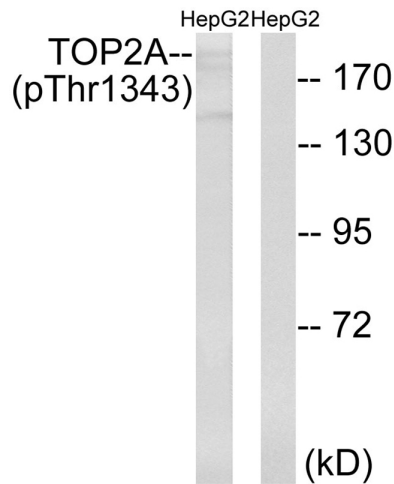
[View online »](#)

Background:

This gene encodes a DNA topoisomerase, an enzyme that controls and alters the topologic states of DNA during transcription. This nuclear enzyme is involved in processes such as chromosome condensation, chromatid separation, and the relief of torsional stress that occurs during DNA transcription and replication. It catalyzes the transient breaking and rejoining of two strands of duplex DNA which allows the strands to pass through one another, thus altering the topology of DNA. Two forms of this enzyme exist as likely products of a gene duplication event.

Synonyms:

TOP2, Top-2, DNA topoisomerase 2-alpha, DNA topoisomerase II alpha isozyme

Product images:


Western blot analysis of extracts from HepG2 cells treated with Ca²⁺ using TOP2A (Phospho-Thr1343) Antibody. The lane on the right is treated with the antigen-specific peptide.