

Product datasheet for **AP54560PU-N**

WFDC1 (C-term) Rabbit Polyclonal Antibody

Product data:

| | |
|-----------------------|--|
| Product Type: | Primary Antibodies |
| Applications: | IHC, WB |
| Recommended Dilution: | ELISA: 1:1;000. Western blot: 1:100~500. Immunohistochemistry on paraffin sections: 1:10~50. |
| Reactivity: | Human |
| Host: | Rabbit |
| Isotype: | Ig |
| Clonality: | Polyclonal |
| Immunogen: | KLH conjugated synthetic peptide between 147-177 (H163)amino acids from the C-terminal region of human WFDC1 |
| Specificity: | This antibody detects PS20 (C-term). |
| Formulation: | PBS with 0.09% (W/V) sodium azide State: Aff - Purified State: Liquid Ig fraction |
| Concentration: | lot specific |
| Purification: | Protein A column followed by peptide affinity purification |
| Conjugation: | Unconjugated |
| Storage: | Store at 2 - 8 °C for up to six months or (in aliquots) at -20 °C for longer. Avoid repeated freezing and thawing. |
| Stability: | Shelf life: one year from despatch. |
| Gene Name: | WAP four-disulfide core domain 1 |
| Database Link: | Entrez Gene 58189 Human Q9HC57 |



[View online »](#)

Background:

This gene encodes a member of the WAP-type four disulfide core domain family. The WAP-type four-disulfide core domain, or WAP signature motif, contains eight cysteines forming four disulfide bonds at the core of the protein, and functions as a protease inhibitor in many family members. The encoded protein shares 81% amino acid identity with the rat ps20 protein, which was originally identified as a secreted growth inhibitor. This gene is mapped to chromosome 16q24, an area of frequent loss of heterozygosity in cancers, including prostate, breast and hepatocellular cancers and Wilms' tumor. Owing to its location and a possible growth inhibitory property of its gene product, this gene is suggested to be a tumor suppressor gene.

Synonyms:

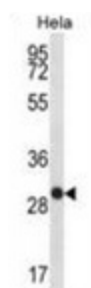
PS20

Note:

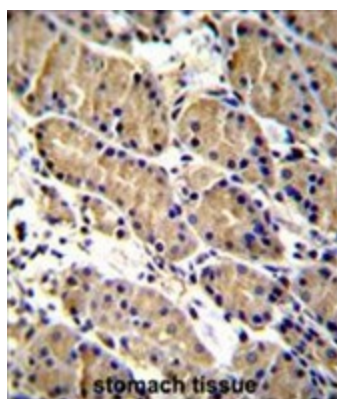
Molecular Weight: 23977 Da

Protein Families:

Secreted Protein

Product images:


WFDC1 Antibody (C-term H163) western blot analysis in Hela cell line lysates (35 ug/lane). This demonstrates the WFDC1 antibody detected the WFDC1 protein (arrow).



WFDC1 Antibody (C-term H163) immunohistochemistry analysis in formalin fixed and paraffin embedded human stomach tissue followed by peroxidase conjugation of the secondary antibody and DAB staining. This data demonstrates the use of WFDC1 Antibody (C-term H163) for immunohistochemistry. Clinical relevance has not been evaluated.