

Product datasheet for **AP54370PU-N**

TSC22D3 (Center) Rabbit Polyclonal Antibody

Product data:

Product Type:	Primary Antibodies
Applications:	WB
Recommended Dilution:	ELISA: 1:1;000. Western blot: 1:100~500.
Reactivity:	Human, Mouse
Host:	Rabbit
Isotype:	Ig
Clonality:	Polyclonal
Immunogen:	KLH conjugated synthetic peptide between 61-91 amino acids from the Central region of human TSC22D3
Specificity:	This antibody detects TSC22D3 (Center).
Formulation:	PBS with 0.09% (W/V) sodium azide State: Aff - Purified State: Liquid Ig fraction
Concentration:	lot specific
Purification:	Protein A column followed by peptide affinity purification
Conjugation:	Unconjugated
Storage:	Store at 2 - 8 °C for up to six months or (in aliquots) at -20 °C for longer. Avoid repeated freezing and thawing.
Stability:	Shelf life: one year from despatch.
Gene Name:	TSC22 domain family member 3
Database Link:	Entrez Gene 14605 Mouse Entrez Gene 1831 Human Q99576



[View online »](#)

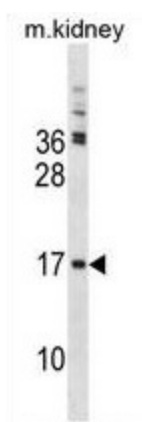
Background: The protein encoded by this gene shares significant sequence identity with the murine TSC-22 and *Drosophila* shs, both of which are leucine zipper proteins, that function as transcriptional regulators. The expression of this gene is stimulated by glucocorticoids and interleukin 10, and it appears to play a key role in the anti-inflammatory and immunosuppressive effects of this steroid and chemokine. Transcript variants encoding different isoforms have been identified for this gene. [provided by RefSeq]

Synonyms: TSC22 domain family protein 3, TSC-22-like protein, TSC-22R, DSIP-immunoreactive peptide, DSIP1, GILZ

Note: **Molecular Weight:** 14810 Da

Protein Families: Transcription Factors

Product images:



TSC22D3 Antibody (Center) western blot analysis in mouse kidney tissue lysates (35 ug/lane). This demonstrates the TSC22D3 antibody detected the TSC22D3 protein (arrow).