

Product datasheet for **AP54102PU-N**

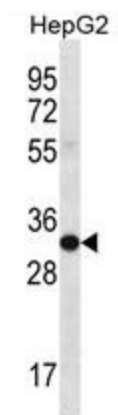
LOC105369243 (N-term) Rabbit Polyclonal Antibody

Product data:

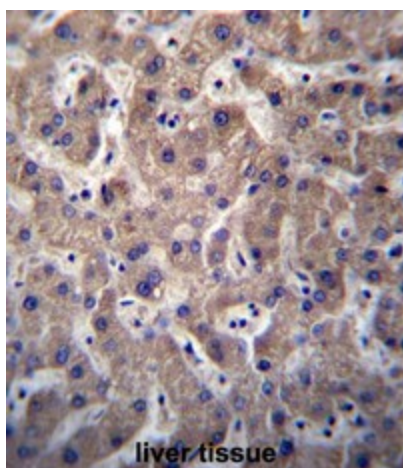
| | |
|-------------------------|---|
| Product Type: | Primary Antibodies |
| Applications: | IHC, WB |
| Recommended Dilution: | ELISA: 1/1000. Western Blot: 1/100 - 1/500. Immunohistochemistry on paraffin sections: 1/10 - 1/50. |
| Reactivity: | Human |
| Host: | Rabbit |
| Isotype: | Ig |
| Clonality: | Polyclonal |
| Immunogen: | KLH conjugated synthetic peptide between 78-107 amino acids from the N-terminal region of human SULT1A3/SULT1A4 |
| Specificity: | This antibody reacts to SULT1A3/SULT1A4. |
| Formulation: | PBS State: Aff - Purified State: Liquid purified Ig fraction Preservative: 0.09% (W/V) sodium azide |
| Concentration: | lot specific |
| Purification: | Affinity chromatography on Protein A |
| Conjugation: | Unconjugated |
| Storage: | Store the antibody undiluted at 2-8°C for one month or (in aliquots) at -20°C for longer. Avoid repeated freezing and thawing. |
| Stability: | Shelf life: one year from despatch. |
| Predicted Protein Size: | 34196 Da |
| Database Link: | Entrez Gene 445329 Human Entrez Gene 105369243 Human P50224 |
| Synonyms: | SULT1A3, SULT1A4, ST1A3/ST1A4, STM, M-PST, HAST3, TL-PST, Aryl sulfotransferase 1A3/1A4 |
| Protein Pathways: | Sulfur metabolism |



[View online »](#)

Product images:

SULT1A3/SULT1A4 Antibody (N-term) western blot analysis in HepG2 cell line lysates (35ug/lane). This demonstrates the SULT1A3/SULT1A4 antibody detected the SULT1A3/SULT1A4 protein (arrow).



SULT1A3/SULT1A4 Antibody (N-term) immunohistochemistry analysis in formalin fixed and paraffin embedded human liver tissue followed by peroxidase conjugation of the secondary antibody and DAB staining. This data demonstrates the use of SULT1A3/SULT1A4 Antibody (N-term) for immunohistochemistry. Clinical relevance has not been evaluated.